

1

2

3

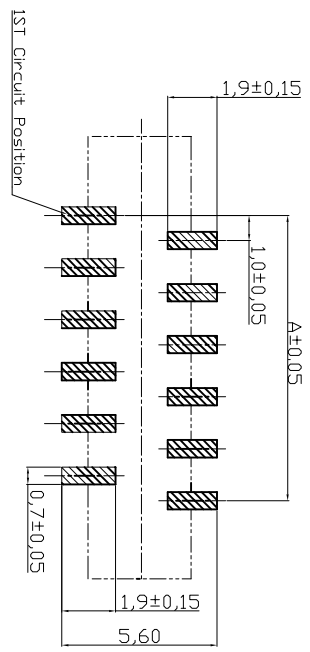
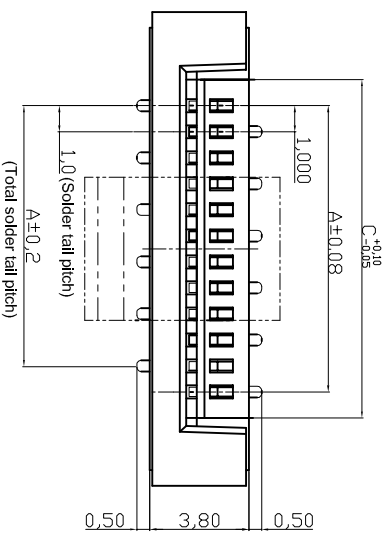
4

5

6

7

Recommended PCB Layout

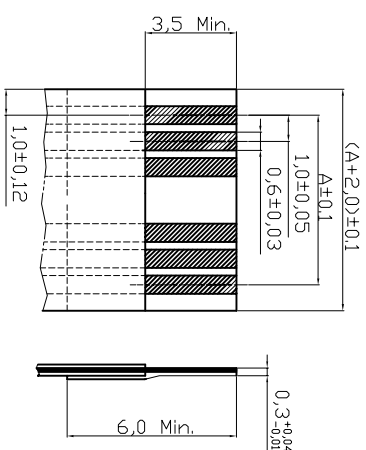


NOTES:

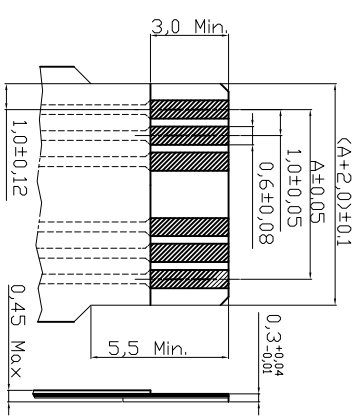
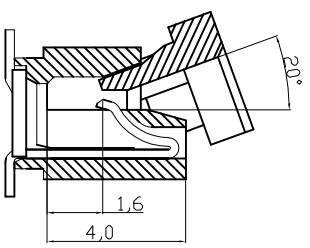
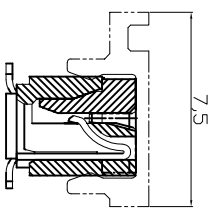
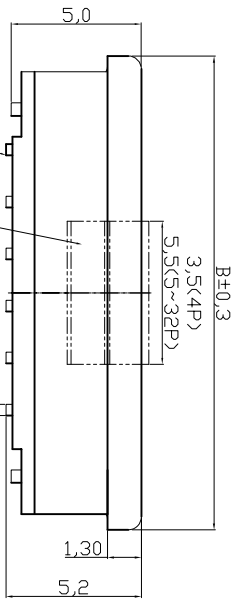
- 1 Body : Nylon 6T UL94V-0 Color Nature
- 2 Slider : Nylon 6T UL 94V-0 Color Brown
- 3 Contact : Phosphor Bronze
- 4 PAD : Nylon 6T UL94V-0, Color Nature
- 5 Plating : Matte Tin plated over Nickel
- 6 Contact type: SMT Type

AFFC10-xx-100-SVS-x

Packing:  
R= Tape & Reel  
T= Tube



Accommodated FFC



Accommodated FFC

IST Circuit Position  
Pick & Place Pad

Scale 1:1

TOLERANCE

.X ±0.15

.XX ±0.10

.XXX ±0.05

DIM TOL

X.° ±1°

X.X° ±X°

Angle TOL

**RoHS compliant**

Customer-No.

ASSMANN WSW-No.

AFFC10-xx-100-SVS-x

Drawing-No.

ASS 2097 CO

rev03

Replace

SHEET 1/2

F

E

D

C

B

A

1

2

3

4

5

6

7

H

Scale	1:1						
TOLERANCE					Drawn	Date	03.11.2006
.X	±0.15				Approved	Date	12.08.2014
.XX	±0.10					Name	Hellwig
.XXX	±0.05	③	Correct the reel material to corrugated	12.08.2014		Name	Winnie
DIM TOL		②	Update	03.08.2009		Name	Dean
X.°	±1°	①	Drawn	03.11.2006		Name	Hellwig
X.X°	±X°						
Angle TOL			Id.		Modification		



SV/xxx

1

2

3

4

5

6

7

A

## NOTES:

- ①. Reel Material: Corrugated Paper
2. Carrier Material : Clear, Conductive Polystyrene Alloy
3. Cover Tape Material: Polyester
4. Cover Tape Peel Strength: 0.1N-1.3N
5. Carrier camber is within 1mm in 250mm
6. All dimensions meet EIA-481-B requirements
7. Quantity: 800 PCS/Reel

A

B

C

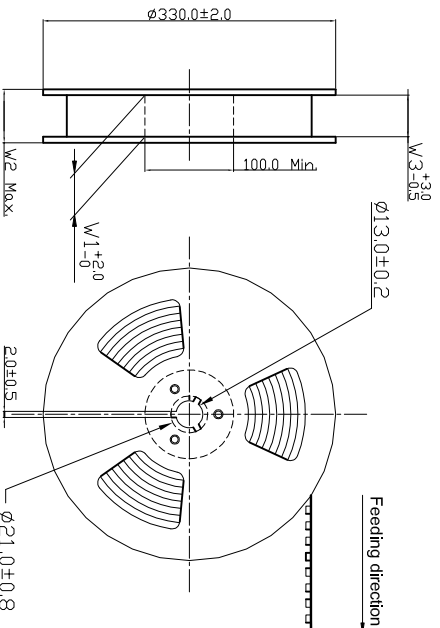
D

E

F

G

H

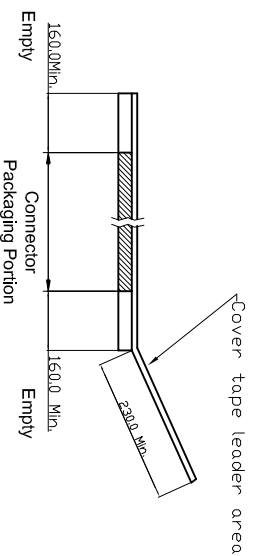


Circuits	Dimension			Packing (Reel/Carton)
	E	F	W1	
4-10	24.0	-	24.5	9
11-15	32.0	28.40	32.5	7
16-26	44.0	40.40	44.5	5
27-32	56.0	52.40	56.5	3

C

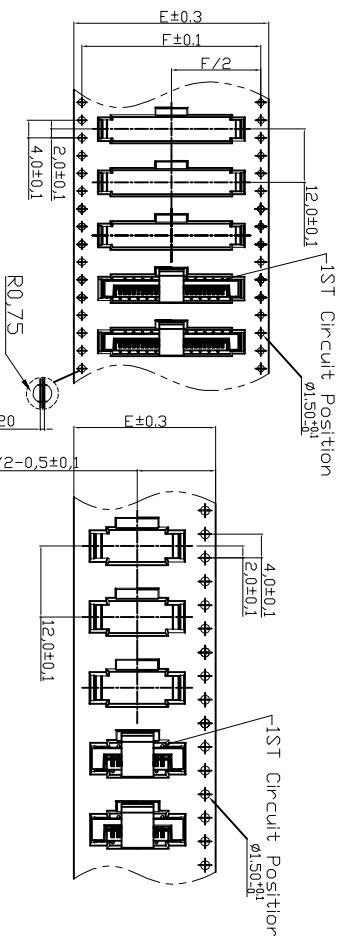
Feeding direction

Feeding direction



WIDTH: 32.44, 56 mm Carrier

WIDTH: 24 mm Carrier



Scale Free

TOLERANCE

.X ±X

.XX ±X

.XXX ±X

DIM TOL

X. ° ±1°

X.X° ±X°

Angle TOL

Customer-No.

Date

Name

Drawing-No.

ASSMANN WSW-No.  
AFFC10-xx-100-SVS-X

ASS 2097 CO rev03

Replace

SHEET  
2/2

RoHS compliant

1

2

3

4

5

6

7

SV/xxx