

1

2

3

4

5

6

7

A

A

B

B

C

C

D

D

E

E

F

F

NOTE:

1.MATERIAL

1.1 Contact: Phosphor Bronze,T=0.254mm Full Hard

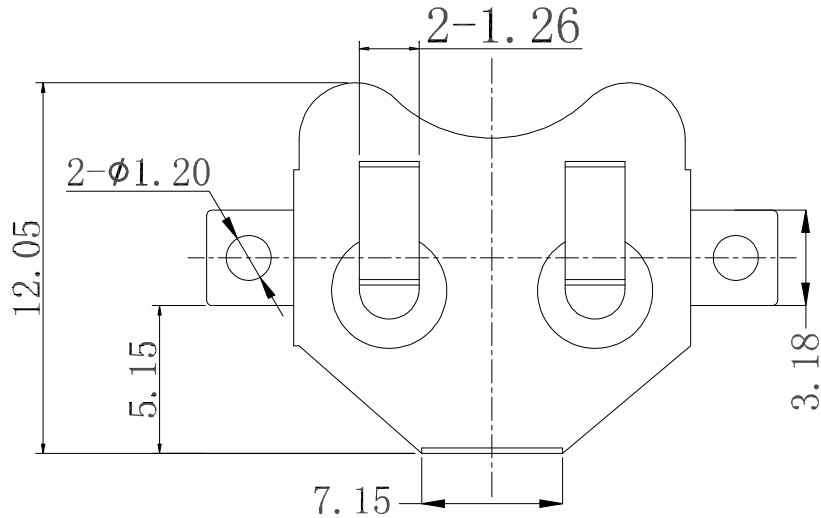
2.FINISH

2.1 Contact: Nickel Plated
0.00254-0.00762 Nickel,Over 0.00127-0.00254 Copper

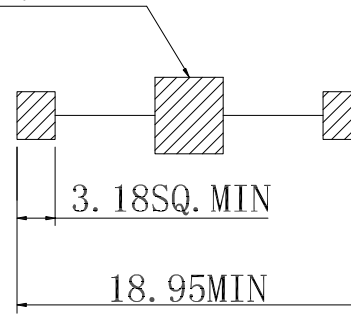
3.Geometry

3.1 All inside bend radii to be a min. of material thickness unless otherwise specified
3.2 Part must be free of all burrs and sharp edges
3.3 Indicates critical dimension

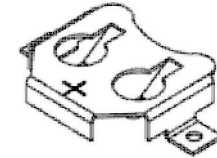
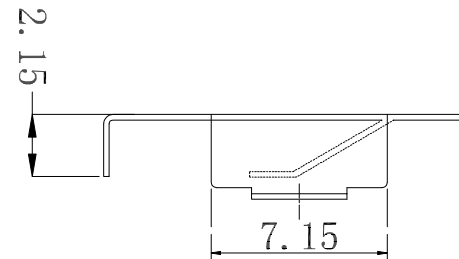
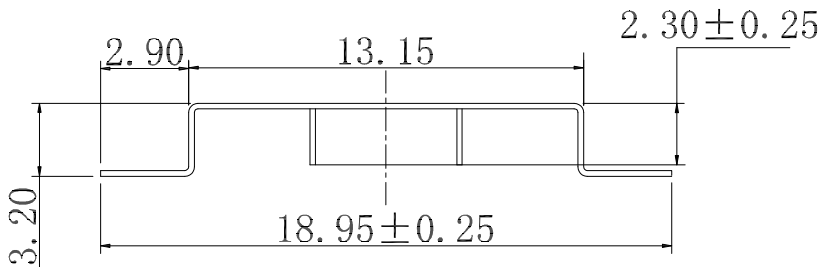
4.Packing: Tape & Reel



NEG. CONTACT (PAD)
4.00 SQ. MIN



(MOUNTING PAD LAYOUT)



G

G

H

H

RoHS compliant
unit:mm

Scale	Free
TOLERANCE	
X.	±0.35
.X	±0.25
.XX	±0.20
.XXX	±0.15
DIM	TOL
Angle	TOL

Drawn	24.11.2021	Peter
Approved	24.11.2021	Peter
①	Drawn	24.11.2021
Id.	modification	Date
		Name



Description: Battery Contacts CR1225 Type	
ASSMANN WSW-NO. A-BAT-CH-C2-EA-CSR1	
Drawing-No. ASS 9095 CO	rev00
Customer-No.	SHEET 1 / 1

1

2

3

4

5

6

7