

1

2

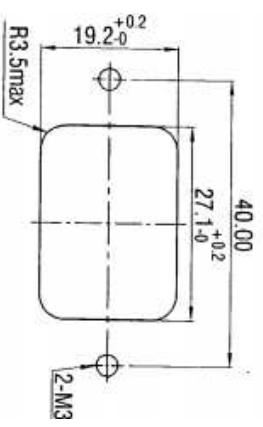
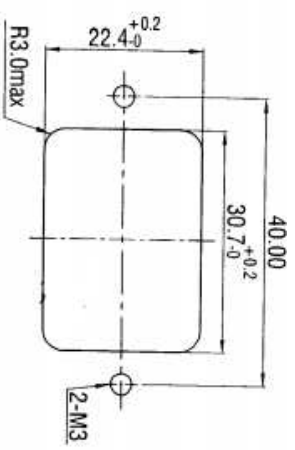
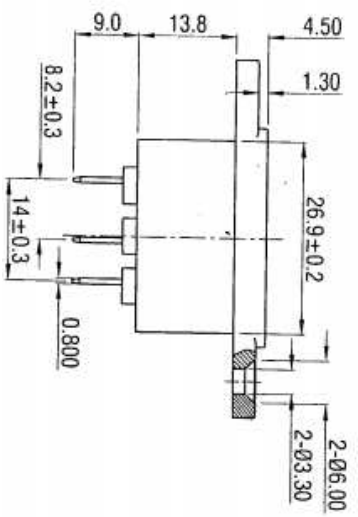
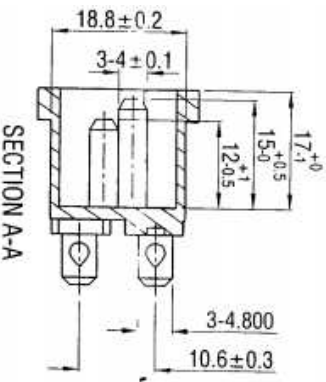
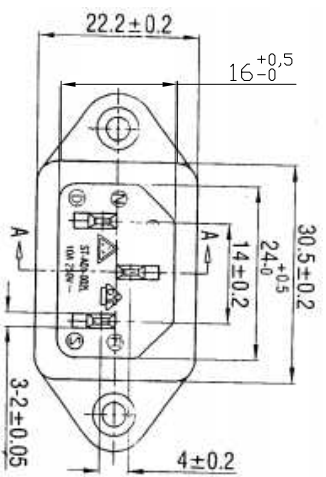
3

4

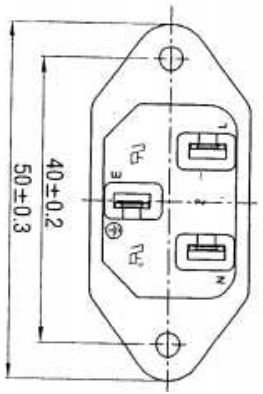
5

6

7



FOR REAR MOUNTING USE  
PANEL CUT-OUT



**NOTES:**

- A. Material:**  
 1. Housing: PBT WITH GF30% UL 94V-0 Color : Black  
 2. Terminal: COPPER ALLOY, TIN PLATED
- B. Electrical Characteristics:**  
 1. Rating: 15A 250V~ (UL,CUL)  
 10A 250V~ (CCC,VDE,SENKO,NEMKO,FIMKO,DEMKO,SAA,KC)  
 2. Electric Strength: AC 2,000 V FOR ONE MINUTE  
 3. Insulation Resistance: 100MΩ MIN. AT 500V DC
- C. Approvals:**  
 UL, CUL, CCC, VDE, SENKO, NEMKO, FIMKO, DEMKO, SAA, KC

**RoHS compliant**

Scale	1:1									
TOLERANCE										
X.X	±0.3									
X.XX	±0.2									
X.XXX	±0.1	③	Change of plant	18.12.2012	Winnie					
DIM	TOL	②	Update	08.07.2009	Dean					
Ang.	±3°	①	Drawn	14.12.2007	N.Schulz					
UNIT	mm		Modification							



Customer-No.	
ASSMANN WSW-No.	
<b>A-KGS-F/T1N</b>	
Drawing-No.	
<b>ASS 0889 CO</b>	rev03
Replace	SHEET

1

2

3

4

5

6

7

184