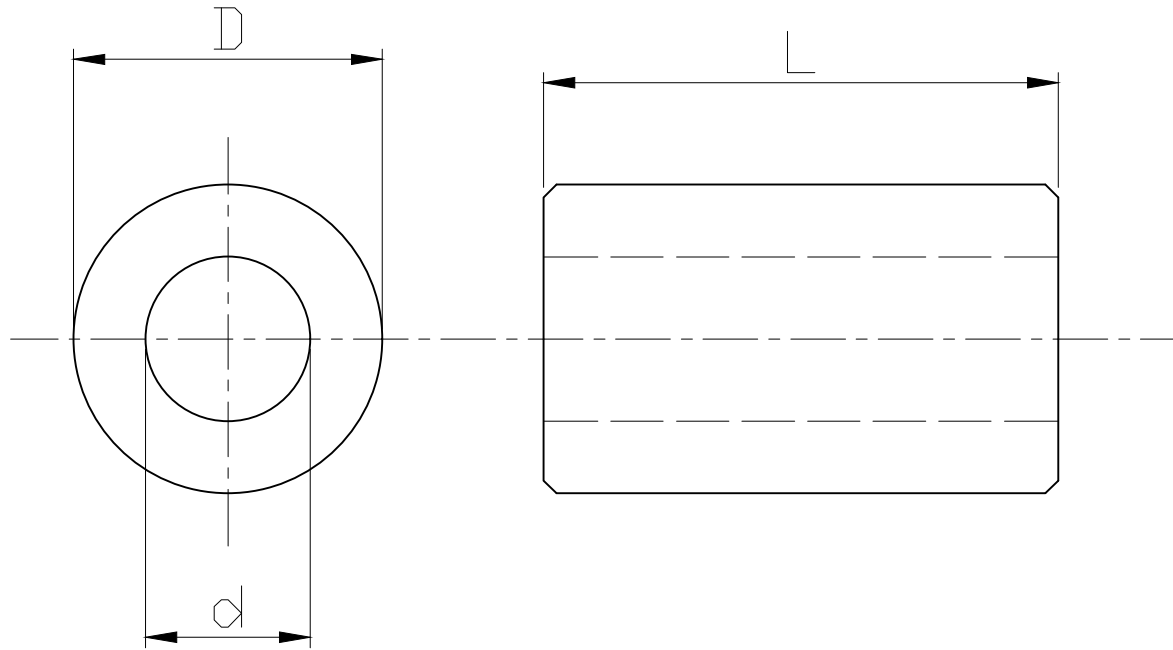


RoHS compliant



For M3-screws  
nickel plated

PU=100 pcs

Option	Dimensions		
	L	D	d
A	5	8	4.3
B	8	8	4.3
C	10	8	4.3
D	12	8	4.3
E	15	8	4.3
G	20	8	4.3

Scale	1:1					Date	Name	Customer-No.
TOLERANCE						Drawn	20.08.2009	
X.	±X					Approved	10.03.2010	Andy
X.X	±X							
X.XX	±X							
DIM	TOL	②	Modify drawong	10.03.2010	Dean			Drawing-No. <b>ASS 0919 HS</b>
X.°	±X°							
X.X°	±X°	①	Drawn	20.08.2009	Dean			
Angle	TOL	Id.	Modification	Date	Name	Replace	Sheet	

Customer-No.

ASSMANN WSW-No.

V6255x

Drawing-No.

ASS 0919 HS

rev02

Replace

Sheet

