

A

B

C

D

E

F

G

H

A

B

C

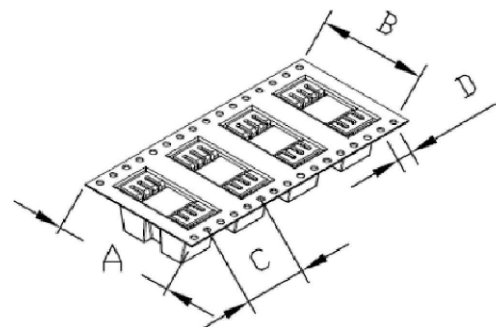
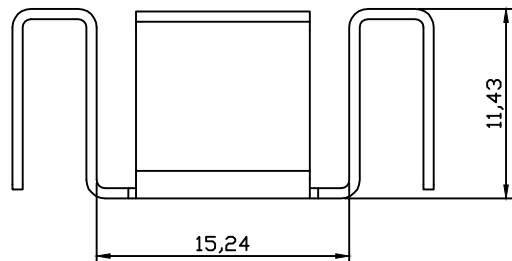
D

E

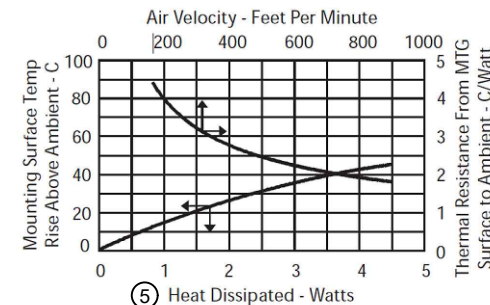
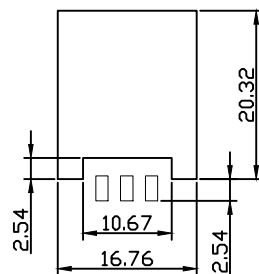
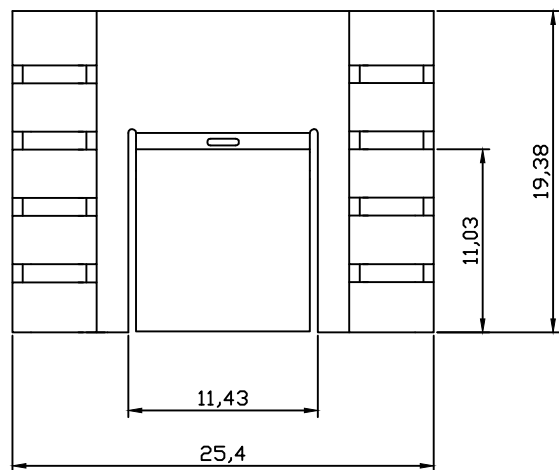
F

G

H



Tape Reel Dimension	
A	44.0
B	40.4
C	36.0 (2)
D	4.00 (8)



- Material: C1100, 0.6mm thick
- (7) Finished: Bright Tin plated
- (1) Thermal resistance: 11K/W

(3) (4) Recommended PCB solder Layout

PART NO.	PACKING	REMARK
V-1102-SMD/A-L	BULK	
V-1102-SMD/A	TAPE & REEL	150PC=1REEL

RoHS compliant
Unit: mm

Scale	Free	(8)	Modification	Date	Name
TOLERANCE		(7)	Add the type of tin plating	16.02.2023	Daniel
		(6)	Change of product location	09.03.2022	Larsan
UNIT	±0.30	(5)	Add thermal resistance graph	01.03.2016	Amy
DIM	TOL	(4)	Update PCB layout	30.04.2014	Amy
		(3)	Add PCB layout	23.04.2014	Amy
Angle	TOL	Id.	Modification	Date	Name



Customer-No.
ASSMANN WSW-No. V-1102- SMD/A-L
V-1102- SMD/A

Drawing-No. **ASS 1004 HS** rev08
Replace Sheet 1 / 1