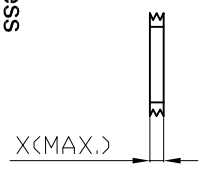
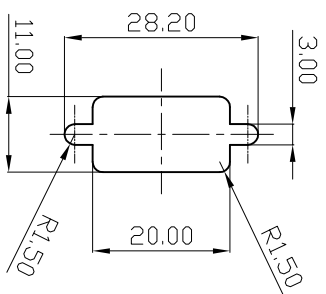


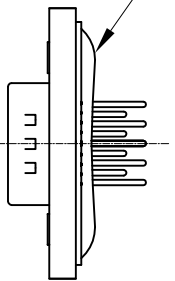
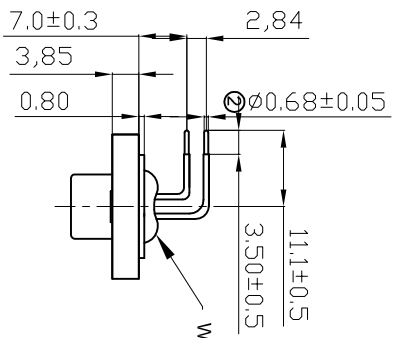
1 2 3 4 5 6 7



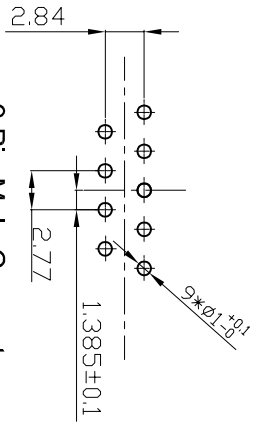
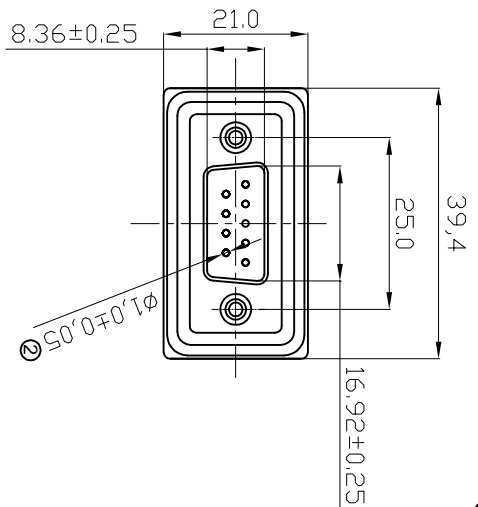
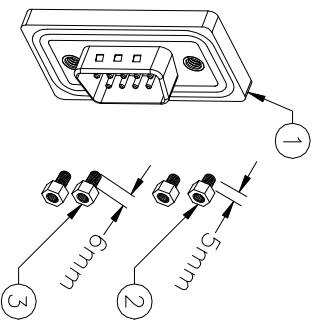
**A**  
Panel Thickness  
Screw L=5.0 For Panel Thickness  
Under 1.2mm  
Screw L=6.0 For Panel Thickness  
Between 1.2-2.0mm



**E**  
Recommended Panel Cut-Out



**NOTES:**  
**MATERIAL**  
1. Insulator Material: Black, NYLON+G/F  
2. Contact Material : Copper Alloy  
3. Plating : Gold Plating  
4. Waterproof Rate: IP67  
5. Do Mating Test After Glued



9 Pin Male Connector  
PCB Pin Layout  
Scale 2:1

**RoHS compliant**  
Unit: mm

Scale	Free				
TOLERANCE					
X.X	±0.25				
X.XX	±0.10				
X.XXX	±0.05				
DIM	TOL	②	Cancel LOGO and change dimension	Tom	
ANGLE	±1°	①	Drawn	JACK	
X.X°	±X°				
Angle	TOL	Id.	Modification	Date	Name



Customer-No.  
ASSMANN WSW-No.  
**A-DS 09 AA-WP**

Drawing-No.  
**ASS 3245 CO**

Replace Sheet

1 2 3 4 5 6 7

H G F E D C B A