

1

2

3

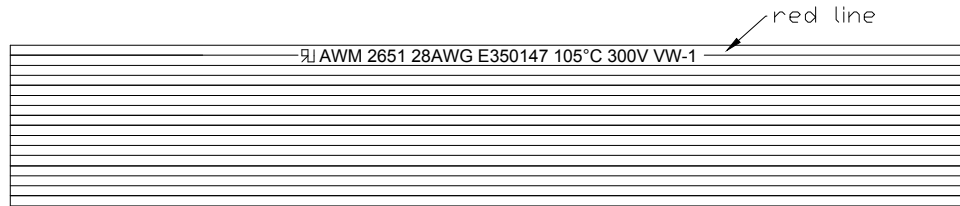
4

5

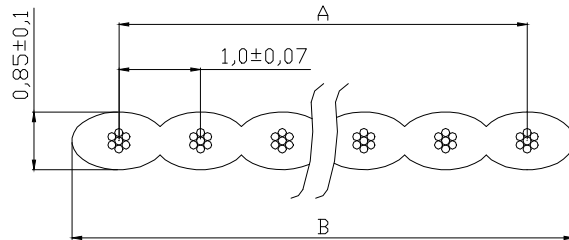
6

7

A



B



C

D

②	Cores	Size of conductor		A①	B①	Cores	Size of conductor		A①	B①
		AWG	Composition				AWG	Composition		
	05	28	7/0.127	4.00±0.18	5.00±0.18	24	28	7/0.127	23.0±0.22	24.0±0.22
	08	28	7/0.127	7.00±0.18	8.00±0.18	25	28	7/0.127	24.0±0.22	25.0±0.22
	09	28	7/0.127	8.00±0.18	9.00±0.18	26	28	7/0.127	25.0±0.22	26.0±0.22
	10	28	7/0.127	9.00±0.18	10.0±0.18	30	28	7/0.127	29.0±0.25	30.0±0.25
	12	28	7/0.127	11.0±0.18	12.0±0.18	34	28	7/0.127	33.0±0.25	34.0±0.25
	14	28	7/0.127	13.0±0.18	14.0±0.18	②37	28	7/0.127	36.0±0.25	37.0±0.25
	16	28	7/0.127	15.0±0.22	16.0±0.22	40	28	7/0.127	39.0±0.25	40.0±0.25
	18	28	7/0.127	17.0±0.22	18.0±0.22	44	28	7/0.127	43.0±0.28	44.0±0.28
	20	28	7/0.127	19.0±0.22	20.0±0.22	50	28	7/0.127	49.0±0.28	50.0±0.28

E

F

G

RoHS compliant

Unit: mm

Scale	Free					Date	Name	Customer-No.
TOLERANCE					Drawn	24.04.2015	Amy	
		③	Update notes	12.06.2020	Amy	Approved	12.06.2020	Luca
		②	Add more cores	05.08.2016	Amy			
DIM	TOL	①	Update the tolerance	04.11.2015	Amy			Drawing-No.
		①	Drawn	24.04.2015	Amy			ASSMANN WSW-No.
Angle	TOL	Id.	Modification	Date	Name	<b>ASS 7307 CA</b>		rev03
						Replace	Sheet	

H

1

2

3

4

5

6

7

A

B

C

D

E

F

G

H

## ③ Material

Insulation: PVC Grey cable Red line  
 Insulation thickness: 0.23mm ave ; 0.18mm min.

## Conduction

AWG size: 28AWG  
 Number of stands in each conductor: 7/0.127mm TC  
 Cross section area: 0.079mm<sup>2</sup>

## Electronic characteristics

Spark test: 2500 V  
 Conductor resistance: 237Ω max./KM  
 Insulation resistance: 100MΩ max./KM

## UL style: 2651

Rated temperature: 105°C

Rated voltage: 300V

Passes VW-1 vertical flame test