

1

2

3

4

5

6

7

A

⑤

Order Code

AGP - 09 - X
1 2

SPECIFICATION Material Features

This shell hood is supplied with side entry(45°):

The strain relief with two screw is attached separately.

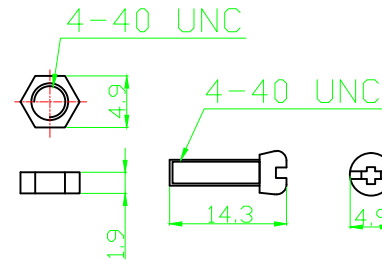
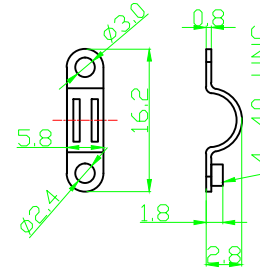
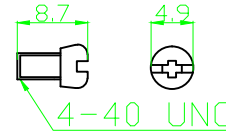
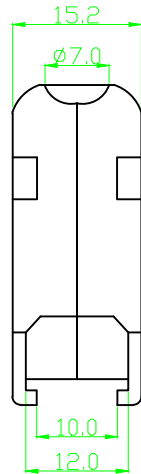
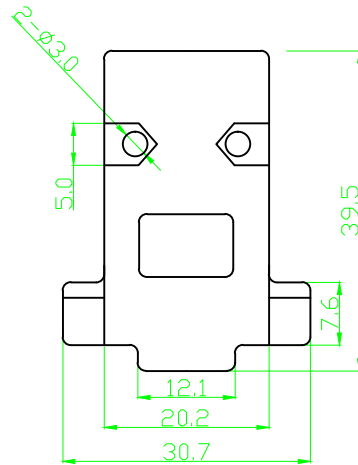
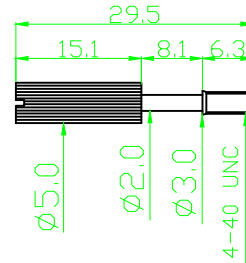
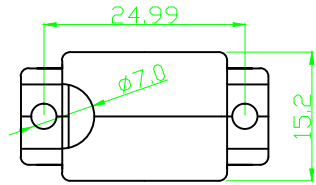
1 No. of contacts
09

2 Version
S -Plastic grey
S-ME -Metalized

Material
INSULATOR : ABS UL94HB
SCREW: STEEL
FINISHED: CHROMATE PLATED


Delivery includes

- 2 half-sheets
- 2 knurled screws (short)
- 4 screws
- 2 strain relief bow
- 2 nuts



RoHS compliant

Unit: mm

Scale	free					Date	Name	Customer-No.
TOLERANCE		⑤	Update & Add 15/37/50 pol	16.10.2019	Carson	Drawn	12.01.2005	Ken
X.	±0.5	④	Update	04.03.2011	N.Schulz	Approved	16.10.2019	Carson
X.X	±0.3	③	Modify drawing	24.12.2009	Dean			
X.XX	±0.2	②	ASSMANN Nr. vergeben	02.07.2007	N.Schulz			
DIM	TOL	①	Drawn	12.01.2005	Ken			
Angle	±5°	Id.	Modification	Date	Name	Replace		Sheet 1/5

ASSMANN WSW-No.
AGP 09 x

Drawing-No.
ASS 0155 CO rev05

B

C

D

E

F

G

H

1

2

3

4

5

6

7

1

2

3

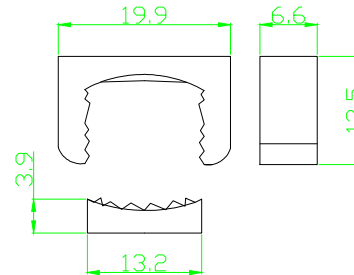
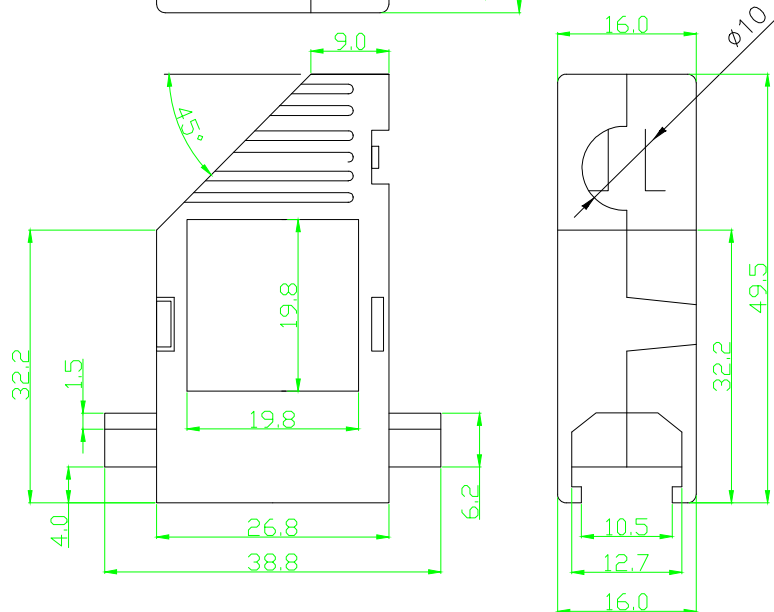
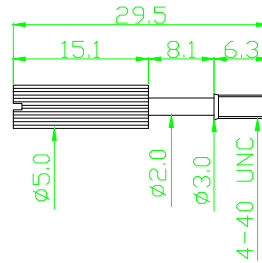
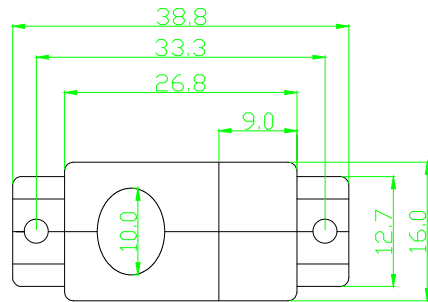
4

5

6

7

⑤



Order Code

AGP - 15 - X
1 21 No. of contacts
152 Version
S -Plastic grey
S-ME -MetalizedSPECIFICATION
Material Features

This shell hood is supplied with side entry(45°):

The strain relief with two screw is attached separately.

Material

INSULATOR : ABS UL94HB

SCREW: STEEL

FINISHED: CHROMATE PLATED

Delivery includes

- 2 half-sheets
- 2 knurledge screws (short)
- 4 screws
- 2 strain relief bow
- 2 nuts

RoHS compliant

Unit: mm

Scale	free					Date	Name	Customer-No.
TOLERANCE		⑤	Update & Add 15/37/50 pol	16.10.2019	Carson	Drawn	12.01.2005	Ken
X.	±0.5	④	Update	04.03.2011	N.Schulz	Approved	16.10.2019	Carson
X.X	±0.3	③	Modify drawing	24.12.2009	Dean			
X.XX	±0.2	②	ASSMANN Nr. vergeben	02.07.2007	N.Schulz			
DIM	TOL	①	Drawn	12.01.2005	Ken			
Angle	±5°	Id.	Modification	Date	Name			
								Replace

ASSMANN WSW-No.
AGP 15 xDrawing-No.
ASS 0155 CO rev05

1

2

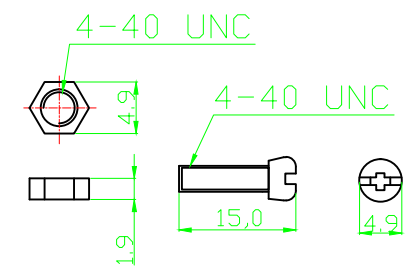
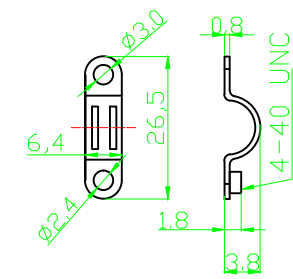
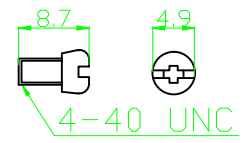
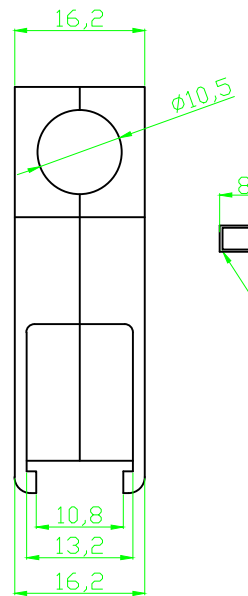
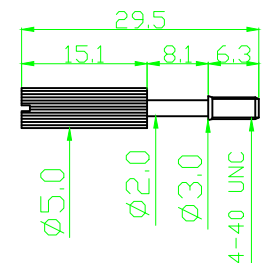
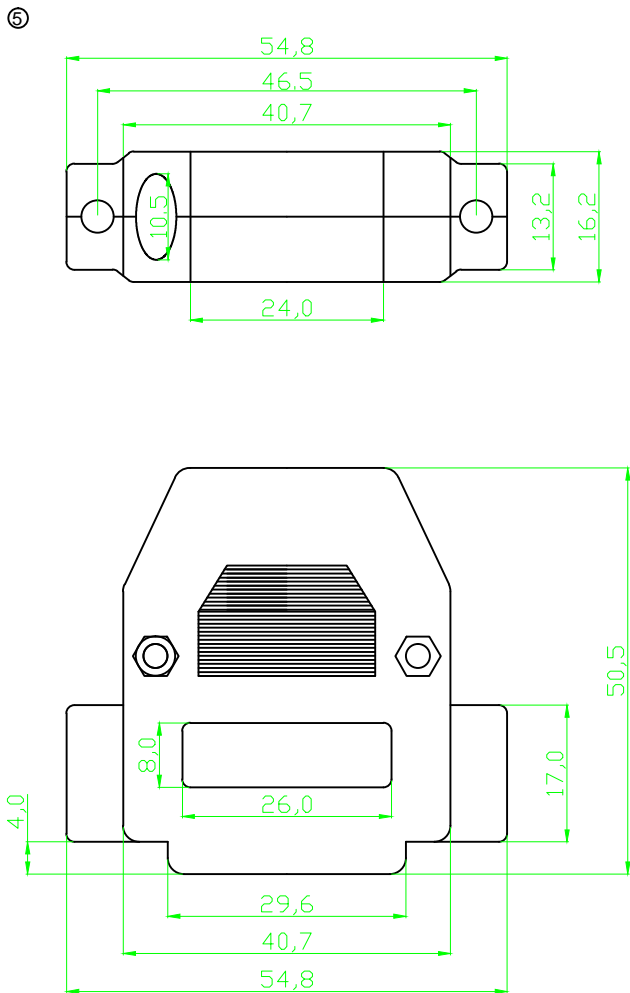
3

4

5

6

7



Order Code

AGP - 25 - X
1 2

- 1** No. of contacts
25
- 2** Version
S -Plastic grey
S-ME -Metalized

SPECIFICATION
Material Features

This shell hood is supplied with side entry(45°):
The strain relief with two screw is attached separately.

Material
INSULATOR : ABS UL94HB
SCREW: STEEL
FINISHED: CHROMATE PLATED

Delivery includes

- 2 half-sheets
- 2 knurled screws (short)
- 4 screws
- 2 strain relief bow
- 2 nuts

RoHS compliant
Unit: mm

Scale	free					Date	Name	Customer-No.
TOLERANCE								
X.	±0.5	⑤	Update & Add 15/37/50 pol	16.10.2019	Carson	Drawn	12.01.2005	Ken
X.X	±0.3	④	Update	04.03.2011	N.Schulz	Approved	16.10.2019	Carson
X.XX	±0.2	③	Modify drawing	24.12.2009	Dean			
DIM	TOL	②	ASSMANN Nr. vergeben	02.07.2007	N.Schulz	ASSMANN WSW components		
Angle	±5°	①	Drawn	12.01.2005	Ken			
		Id.	Modification	Date	Name			

AGP 25 x	
Drawing-No.	rev05
ASS 0155 CO	
Replace	Sheet 3/5

1

2

3

4

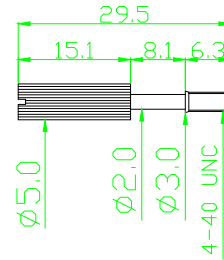
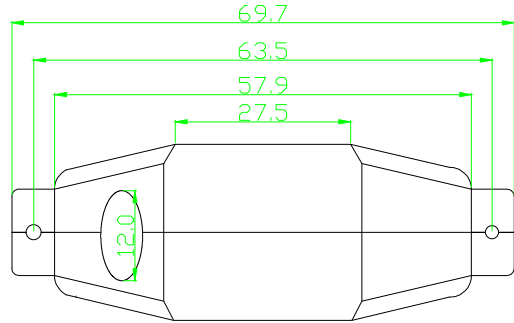
5

6

7

A

©



Order Code

AGP - 37 - X
1 21 No. of contacts
37

2 Version

S -Plastic grey
S-ME -MetalizedSPECIFICATION
Material Features

This shell hood is supplied with side entry(45°):

The strain relief with two screw is attached separately.

Material

INSULATOR : ABS UL94HB
SCREW: STEEL
FINISHED: CHROMATE PLATED

Delivery includes

2 half-sheets
2 knurledge screws (short)
4 screws
2 strain relief bow
2 nuts

B

C

D

E

F

A

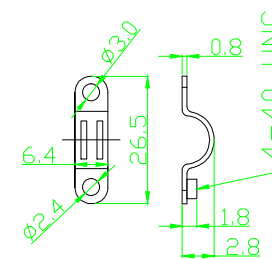
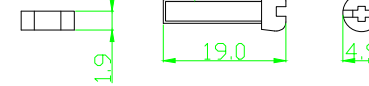
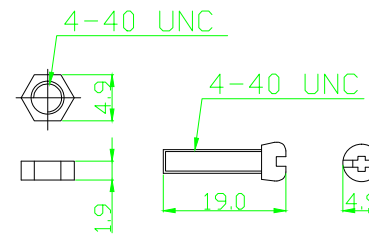
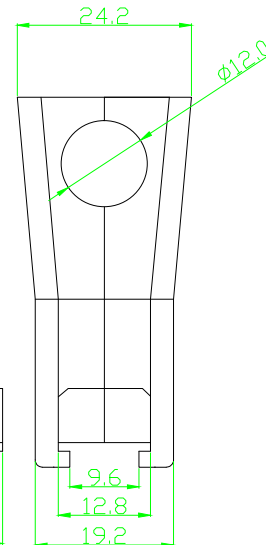
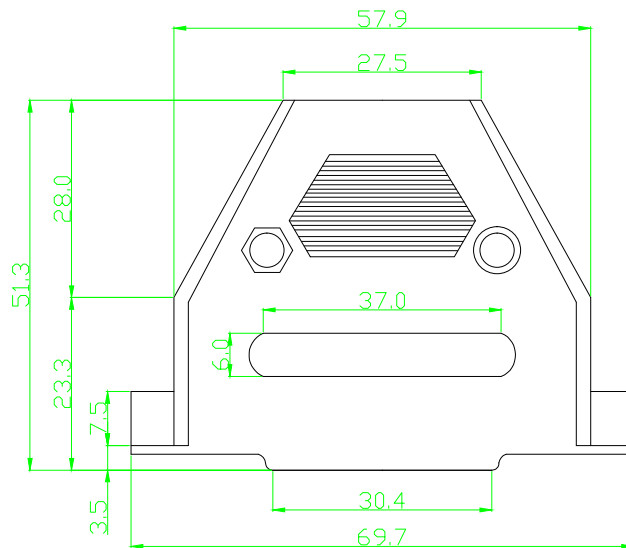
B

C

D

E

F



G

RoHS compliant

Unit: mm

Scale	free					Date	Name	Customer-No.
TOLERANCE		⑤	Update & Add 15/37/50 pol	16.10.2019	Carson	Drawn	12.01.2005	Ken
X.	±0.5	④	Update	04.03.2011	N.Schulz	Approved	16.10.2019	Carson
X.X	±0.3	③	Modify drawing	24.12.2009	Dean			
X.XX	±0.2	②	ASSMANN Nr. vergeben	02.07.2007	N.Schulz			
DIM	TOL	①	Drawn	12.01.2005	Ken			
Angle	±5°	Id.	Modification	Date	Name			

Date

Name

Customer-No.

ASSMANN WSW-No.

AGP 37 x

Drawing-No.

ASS 0155 CO

rev05

Replace

Sheet
4/5

H

H

1

2

3

4

5

6

7

1

2

3

4

5

6

7

A

A

B

B

C

C

D

D

E

E

F

F

G

G

H

H

⑤

Order Code

AGP - 50 - X
1 21 No. of contacts
502 Version
S -Plastic grey
S-ME -MetalizedSPECIFICATION
Material Features

This shell hood is supplied with side entry(45°):

The strain relief with two screw is attached separately.

Material
INSULATOR : ABS UL94HB
SCREW: STEEL
FINISHED: CHROMATE PLATED

Delivery includes

2 half-sheets
2 knurledge screws (short)
4 screws
2 strain relief bow
2 nuts

RoHS compliant

Unit: mm

Scale	free					Date	Name	Customer-No.
TOLERANCE		⑤	Update & Add 15/37/50 pol	16.10.2019	Carson	Drawn	Ken	ASSMANN WSW-No. AGP 50 x
X.	±0.5	④	Update	04.03.2011	N.Schulz	Approved	Carson	
X.X	±0.3	③	Modify drawing	24.12.2009	Dean			Drawing-No. ASS 0155 CO
X.XX	±0.2	②	ASSMANN Nr. vergeben	02.07.2007	N.Schulz			
DIM	TOL	①	Drawn	12.01.2005	Ken			Replace
Angle	±5°	Id.	Modification	Date	Name			

ASS 0155 CO

rev05

Replace

Sheet
5/5

1

2

3

4

5

6

7