

1

2

3

4

5

6

7

A

A

B

B

C

C

D

D

E

E

F

F

G

G

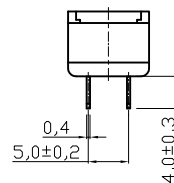
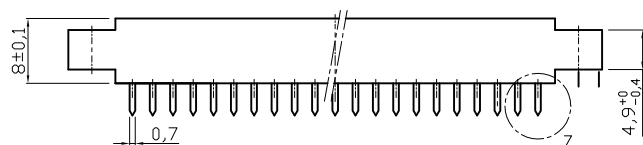
H

H

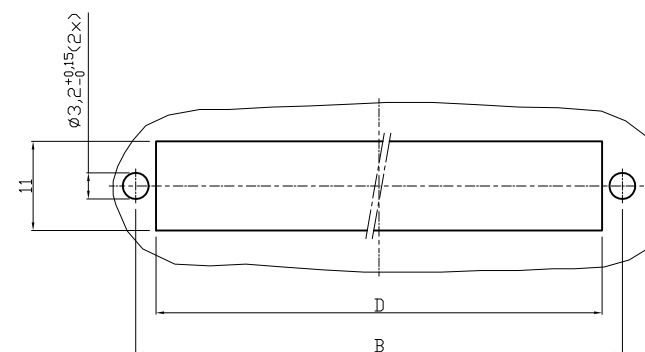
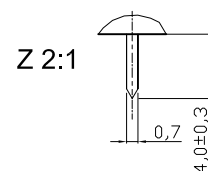
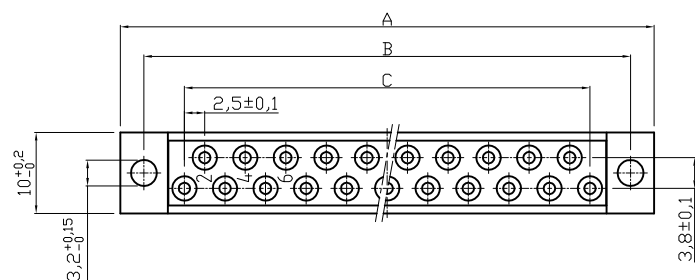
## Notes:

1. Insulator: PC GF UL 94V-1, Grey

2. Contact: Copper ALLOY

A xx-L2/SILVER: Hard Silver Plated  
50 Mating cyclesA xx-L2-III: Gold flash Plated ②  
50 Mating cycles

No. of pos.	A -0,3	B +0,1	C +0,1	D
13	45.8	4.0	12x2.5=30	35
21	65.8	6.0	20x2.5=50	55
31	90.8	8.5	30x2.5=75	80



PANEL CUT OUT

RoHS compliant

Scale	1:1						Date	Name	Customer-No.
TOLERANCE						Drawn	11.03.2010	N.Schulz	
X.	±X					Approved	11.01.2012	Hellwig	ASSMANN WSW-No. A xx-L2-III ② A-xxL2/SILVER
X.X	±X								
X.XX	±X								
X°	±X	②	Add Gold flash version	11.01.2012	Lucas			Drawing-No.	
		①	Drawn	11.03.2010	N.Schulz			ASS 0888 CO	rev02
		Id.	Modification	Date	Name			Replace	Sheet

1

2

3

4

5

6

7