

NOTES:

1. Insulation:
Base & Cover: Glass Filled Polyester UL94V-0
2. Contact : Phosphor Bronze
3. Plating : Matte Tin over Nickel
4. Accommodated Cables:
1.27mm(.050")Center spacing Flat
Cable Insulator OD:0.85 mm dia.
5. Construction: AWG #28(7/0.127 mm)
6. Packing : A-30-xx-P13IO :Tube(Standard)
A-30-xx-P13IR :Tape & Reel

A=1.27 X NO. OF Spaces
 B=A+3.3
 C=A+2.1
 D=A+4.7
 * Available in 4 ~ 26 Circuits

RoHS compliant

Scale	1:1						Date	Name	Customer-No.
TOLERANCE						Drawn	18.08.2006	Hellwig	
.X	±0.30/.012					Approved	06.05.2009	Hellwig	ASSMANN WSW-No. A-30-xx-P13IO A-30-xx-P13IR
.XX	±0.20/.008								
.XXX	±0.10/.004								
DIM	TOL	②	Packing detail added	06.05.2009	Dean	ASSMANN WSW components		Drawing-No.	
X.°	±1°							ASS 2056 CO	rev02
Angle	TOL	①	Drawn	18.08.2006	Hellwig			Replace	SHEET 1 OF 2
UNIT	mm/inch	Id.	Modification	Date	Name				

1

2

3

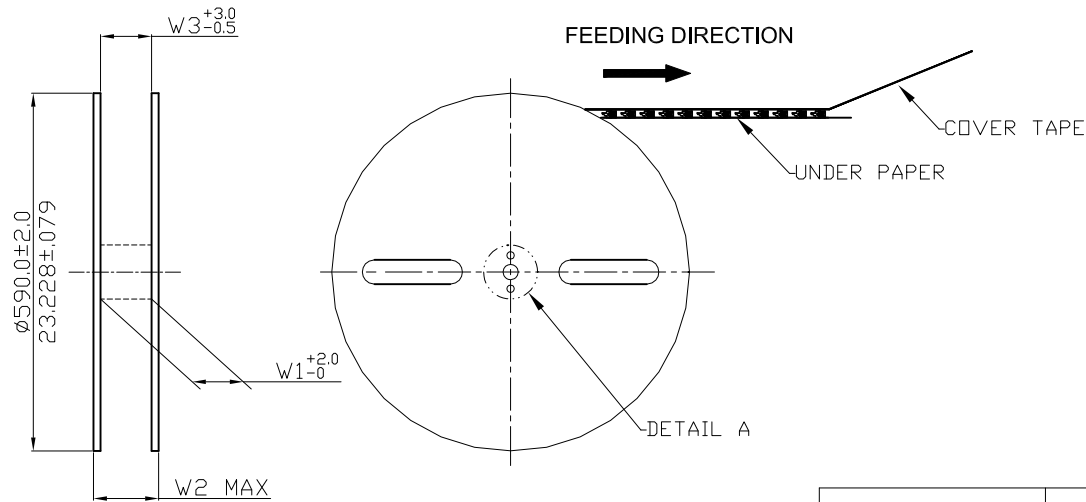
4

5

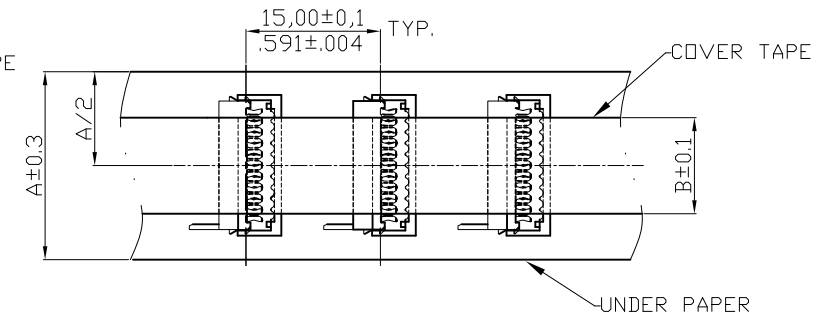
6

7

A



FEEDING DIRECTION



A

B

B

C

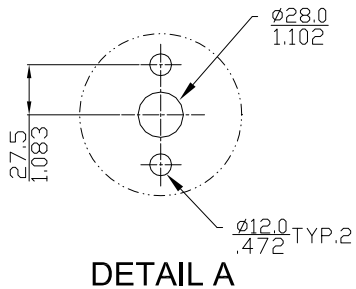
C

D

D

E

E



DETAIL A

F

Circuits	Dimension				
	A	B	W1	W2	W3
4	11.0(.433)	6.0(.236)	13.0(.512)	23.0(.906)	13.0(.512)
6	17.0(.669)	6.0(.236)	18.0(.709)	28.0(1.102)	18.0(.709)
8	17.0(.669)	6.0(.236)	18.0(.709)	28.0(1.102)	18.0(.709)
10	21.0(.827)	6.0(.236)	22.0(.866)	32.0(1.260)	22.0(.866)
12	21.0(.827)	6.0(.236)	22.0(.866)	32.0(1.260)	22.0(.866)
14	24.0(.945)	6.0(.236)	25.0(.984)	35.0(1.378)	25.0(.984)
16	29.0(1.142)	6.0(.236)	30.0(1.181)	40.0(1.575)	30.0(1.181)
18	29.0(1.142)	6.0(.236)	30.0(1.181)	40.0(1.575)	30.0(1.181)
20	32.0(1.260)	6.0(.236)	33.0(1.299)	43.0(1.693)	33.0(1.299)
22	36.0(1.417)	6.0(.236)	37.0(1.457)	47.0(1.850)	37.0(1.457)
24	36.0(1.417)	6.0(.236)	37.0(1.457)	47.0(1.850)	37.0(1.457)
26	39.0(1.535)	6.0(.236)	40.0(1.575)	50.0(1.969)	40.0(1.575)

* Quantity : 2500 PCS/Reel/Caton


RoHS compliant

G

G

H

H

Scale	1:1					Date	Name	Customer-No.	
TOLERANCE					Drawn	18.08.2006	Hellwig	ASSMANN WSW-No. A-30-xx-P13IO A-30-xx-P13IR	
.X	±X				Approved	06.05.2009	Hellwig		
.XX	±X								
.XXX	±X							Drawing-No.	
DIM	TOL	②	Packing detail added	06.05.2009	Dean			ASS 2056 CO	rev02
X.°	±X.°								
Angle	TOL	①	Drawn	18.08.2006	Hellwig	Replace	SHEET 2 OF 2		
		Id.	Modification	Date	Name				

1

2

3

4

5

6

7

SV1487