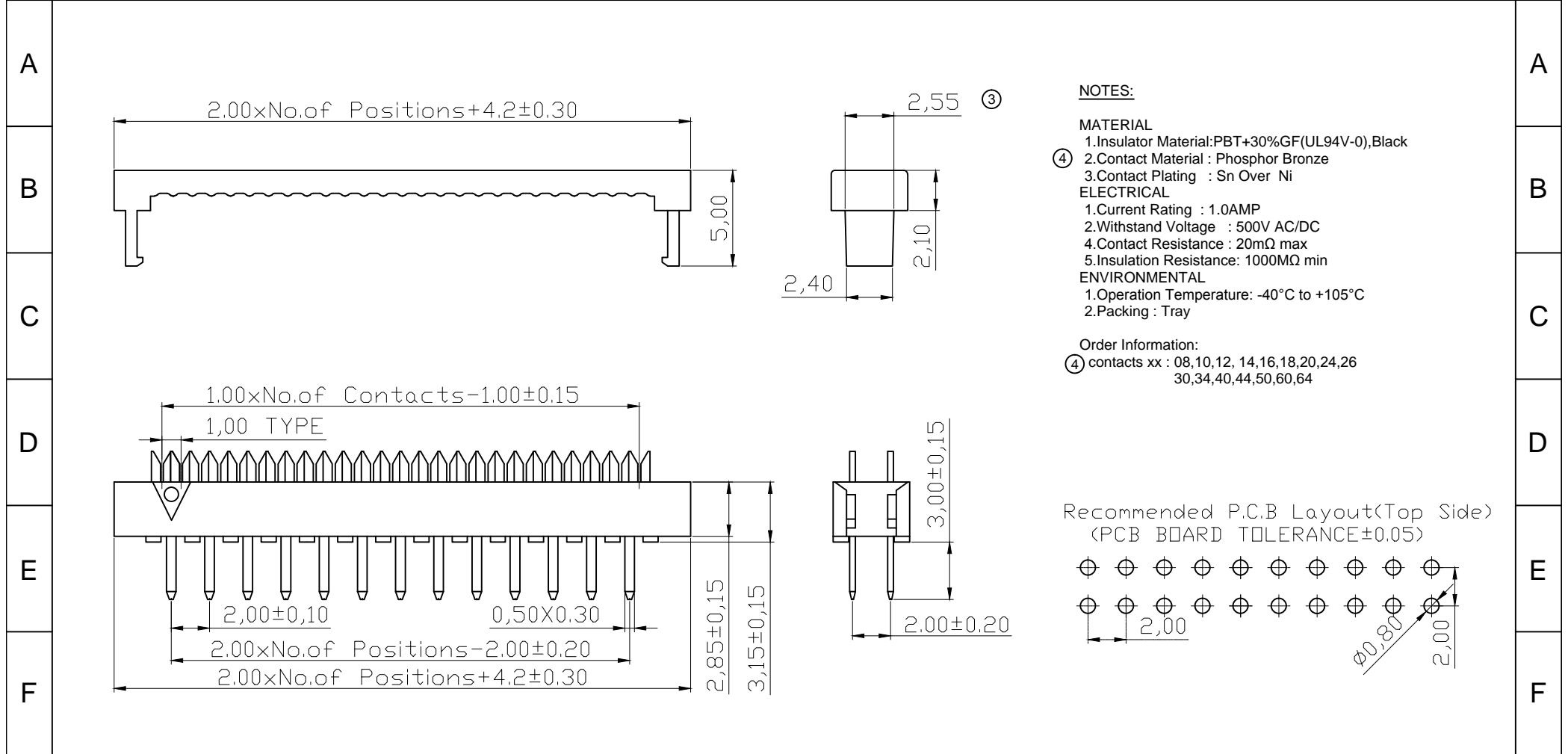


	1	2	3	4	5	6	7	
--	---	---	---	---	---	---	---	--



NOTES:

MATERIAL

- 1. Insulator Material: PBT+30%GF(UL94V-0), Black
- 2. Contact Material : Phosphor Bronze
- 3. Contact Plating : Sn Over Ni

ELECTRICAL

- 1. Current Rating : 1.0AMP
- 2. Withstand Voltage : 500V AC/DC
- 4. Contact Resistance : 20mΩ max
- 5. Insulation Resistance: 1000MΩ min

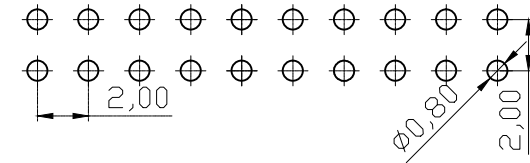
ENVIRONMENTAL

- 1. Operation Temperature: -40°C to +105°C
- 2. Packing : Tray

Order Information:

- ④ contacts xx : 08,10,12, 14,16,18,20,24,26
30,34,40,44,50,60,64

Recommended P.C.B Layout (Top Side)
(PCB BOARD TOLERANCE ± 0.05)



RoHS compliant

Scale	Free					Date	Name	Customer-No.
TOLERANCE						Drawn	25.01.2006	Alex
X.X	± 0.40	④	Add the 12 pins and change Change the material to Phosphor Bronze	15.11.2019	Winnie	Approved	15.11.2019	Hellwig
X.XX	± 0.25	③	Update drawing	28.03.2011	Rale			
X.XXX	± 0.15	②	Update	29.06.2009	Dean			
Angle	$\pm 3^\circ$	①	Drawn	25.01.2006	Alex			
		Id.	Modification	Date	Name			



Drawing-No.	ASS 2325 CO	rev04
Replace		Sheet

	1	2	3	4	5	6	7	SV2298
--	---	---	---	---	---	---	---	--------