

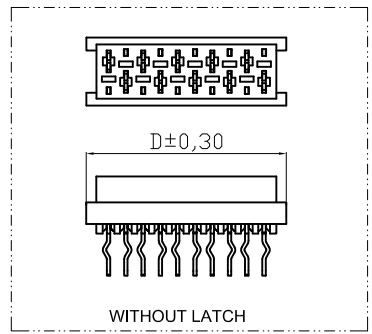
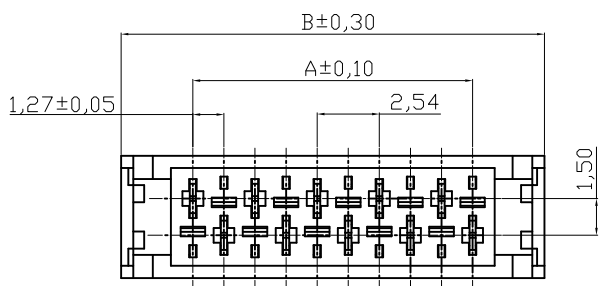
1 2 3 4 5 6 7

A

A

**NOTES:**

- 1. Insulation : Glass Filled Polyester UL 94V-0  
Color Red
- 2. Contact : Phosphor Bronze
- 3. Plating : Matte Tin plated over Nickel
- 4. Contacts type: Straight Type



**A-32-xxV-13xx**  
 No. of Contacts: 04 to 26  
 Packing: 0= Tube Packing  
 ③ R= Paper Reel Packing  
 \* on request  
 latch option: 0= without latch  
 L= with latch

A= 1.27x No. of Spaces  
 B= A + 5.87  
 C= A + 1.80  
 D= A + 3.27  
 \*Available in 4~26 circuits

B

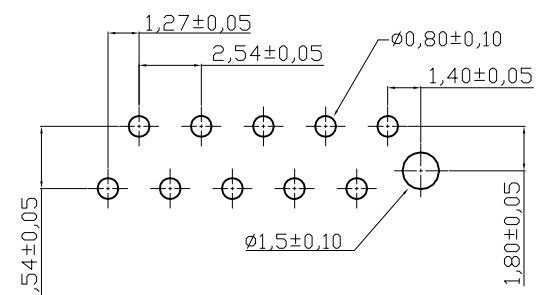
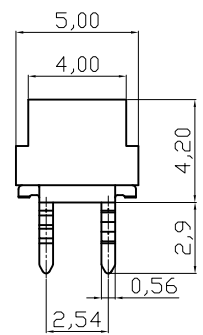
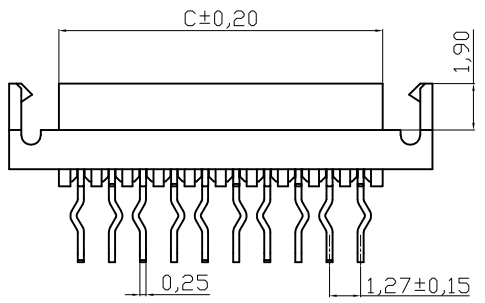
B

C

C

D

D



Recommended PCB Layout

E

E

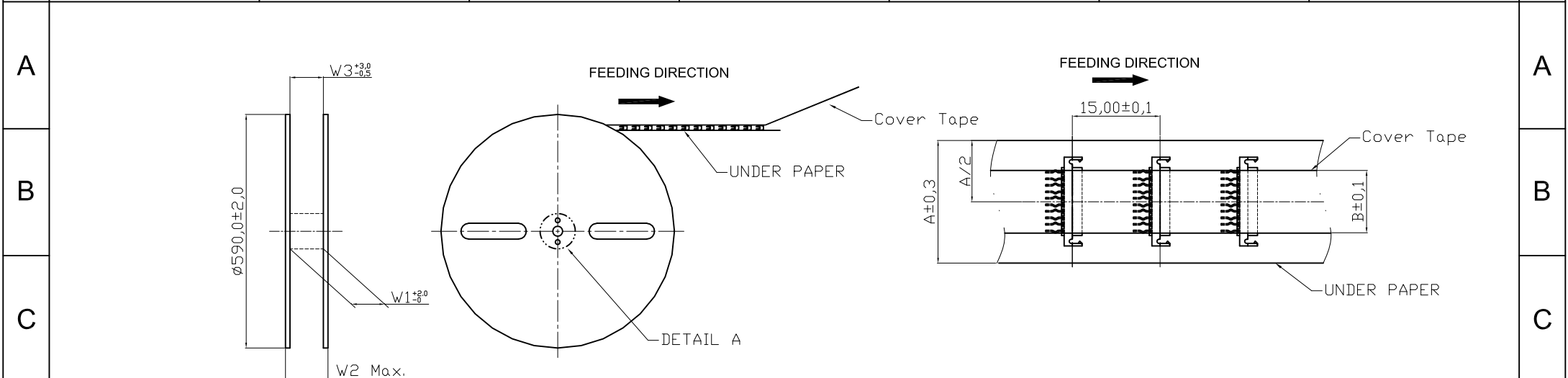
F

F

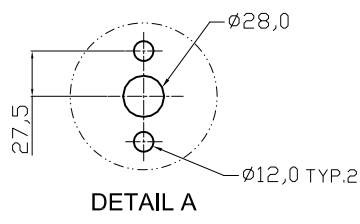
**RoHS compliant**

Scale	Free						Date	Name	Customer-No.
TOLERANCE						Drawn	05.08.2009	Dean	
.X	±0.30					Approved	20.07.2012	Jackey	ASSMANN WSW-No. <b>A-32-xxV-13xx</b>
.XX	±0.20								Drawing-No.
.XXX	±0.10	③	Add remark *	20.07.2012	Lucas				<b>ASS 3632 CO</b>
DIM	TOL	②	Paper Reel Packing added	25.09.2009	Dean				rev03
X.°	±1°	①	Drawn	05.08.2009	Dean			Replace	SHEET 1/2
Angle	TOL	Id.	Modification	Date	Name				

1 2 3 4 5 6 7



Contacts	Dimension				
	A	B	W1	W2	W3
4	11.0	6.0	13.0	23.0	13.0
6	17.0	6.0	18.0	28.0	18.0
8	17.0	6.0	18.0	28.0	18.0
10	21.0	6.0	22.0	32.0	22.0
12	21.0	6.0	22.0	32.0	22.0
14	24.0	6.0	25.0	35.0	25.0
16	29.0	6.0	30.0	40.0	30.0
18	29.0	6.0	30.0	40.0	30.0
20	32.0	6.0	33.0	43.0	33.0
22	36.0	6.0	37.0	47.0	37.0
24	36.0	6.0	37.0	47.0	37.0
26	39.0	6.0	40.0	50.0	40.0



Quantity:2500 PCS/Reel/Caton

**RoHS compliant**

Scale	Free					Date	Name	Customer-No.
TOLERANCE						Drawn	05.08.2009	Dean
.X	±X					Approved	20.07.2012	Jackey
.XX	±X							
.XXX	±X	③	Add remark *	20.07.2012	Lucas			
DIM	TOL	②	Paper Reel Packing added	25.09.2009	Dean			
X.°	±1°	①	Drawn	05.08.2009	Dean			
Angle	TOL	Id.	Modification	Date	Name			



ASSMANN WSW-No. <b>A-32-xxV-13xx</b>	
Drawing-No. <b>ASS 3632 CO</b>	rev03
Replace	SHEET 2/2