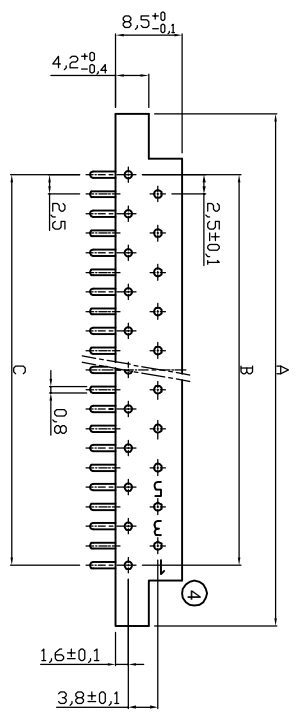
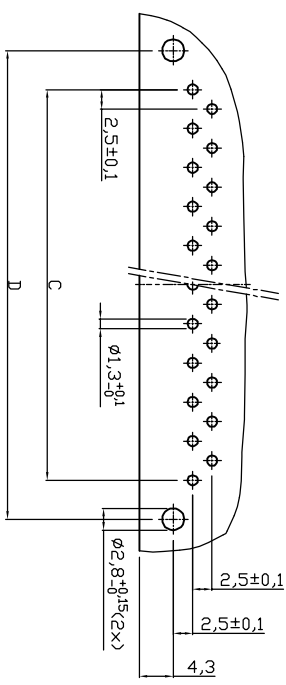
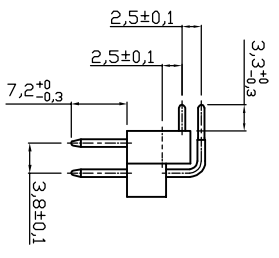
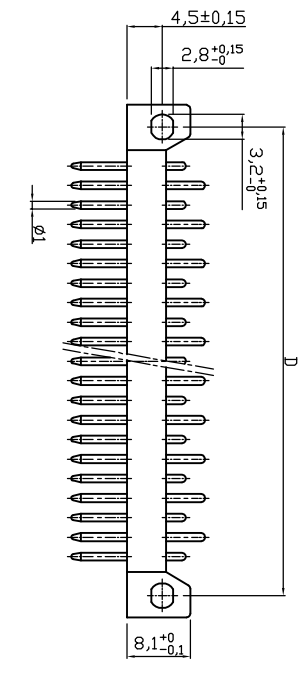


1	2	3	4	5	6	7
---	---	---	---	---	---	---



No. of pos.	A #2	B #1	C #1	D #1
13	4,5,6	12x2,5=30	12x2,5=30	4,0
21	65,6	20x2,5=50	20x2,5=50	6,0
31	90,6	30x2,5=75	30x2,5=75	8,5

- Notes:
- 1. Insulator: PC GF UL 94V-1, Grey
 - 2. Contact: Copper ALLOY
 - A xx-S1/SILVER: Hard Silver Plated
 - 50 Mating cycles
 - A xx-S1 - III : Gold flash Plated
 - 50 Mating cycles



PCB Hole Drillings

RoHS compliant

Scale	1:1	Customer-No.	
TOLERANCE		Customer-No.	
X.	±X	ASSMANN WSW-No.	A XX-S1 - III
X.X	±X	Drawing-No.	A XX-S1/SILVER
X.XX	±X	Customer-No.	
X°	±X	Customer-No.	

Id.	Modification	Date	Name
①	Drawn	31.08.2009	Dean
②	Modify plating	01.09.2009	Dean
③	Add gold flash version	10.01.2012	Lucas
④	Update pin count	26.08.2016	S.Bölling

Date	Name	Customer-No.
31.08.2009	Dean	
10.01.2012	Hellwig	

Replace	Sheet
ASSMANN WSW/ components	rev04

1	2	3	4	5	6	7
---	---	---	---	---	---	---

H	G	F	E	D	C	B	A
---	---	---	---	---	---	---	---