

1

2

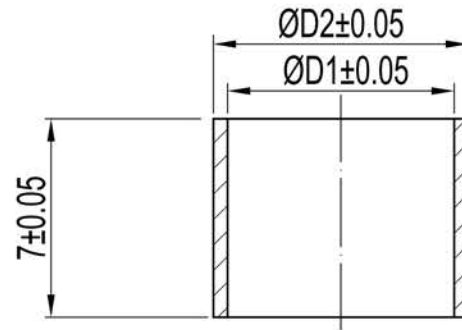
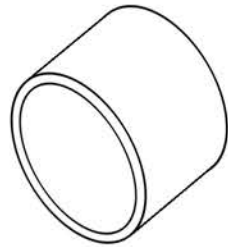
3

4

5

6

7



TECHNICAL SPECIFICATIONS


Material: Brass
Plating: Nickel

Crimp Sleeve ACOV-000-01-MBxx

ØD1	ØD2	Var.
5.0	6.0	MB14
5.5	6.5	MB15
6.0	7.0	MB16
6.5	7.5	MB17
7.0	8.0	MB18
7.5	8.5	MB19
8.0	9.0	MB20
8.5	9.5	MB21
9.0	10.0	MB22
9.5	10.5	MB23
10.0	11.0	MB24
10.5	11.5	MB25
11.0	12.0	MB26
11.5	12.5	MB27
12.0	13.0	MB28
12.5	13.5	MB29
13.0	14.0	MB30
13.7	15.0	MB31
14.0	15.0	MB32
14.5	15.5	MB33
16.0	17.0	MB34

RoHS compliant

Unit: mm

Scale	Free				Date	Name	Customer-No.
TOLERANCE					Drawn	17.08.2017	S.Bölling
0~6	±0.10				Approved	17.08.2017	S.Bölling
6~30	±0.20						
30~120	±0.30						
120~400	±0.50						
DIM	Tol						
Angle	±1°	Ⓢ	Drawn	17.08.2017	S.Bölling		ASSMANN WSW-No. ACOV-000-01-MBxx Drawing-No. ASS_5288_CO rev00 Replace Sheet 1/1
Angle	Tol	Id.	Modification	Date	Name		

1

2

3

4

5

6

7