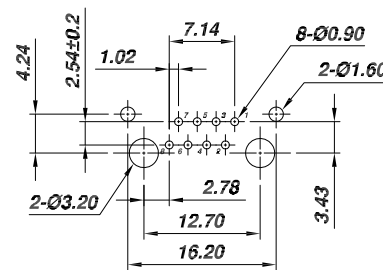
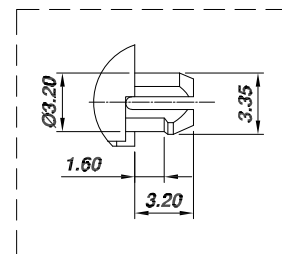
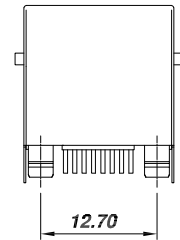
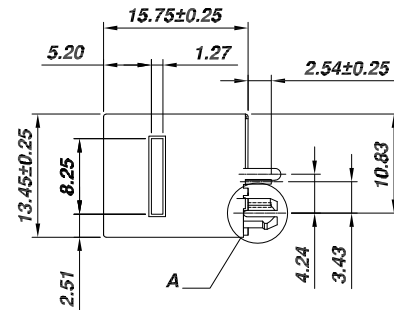
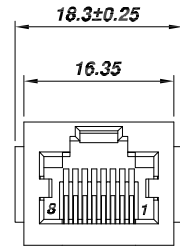


A
B
C
D
E
F
G
H

A
B
C
D
E
F
G
H



PCB LAYOUT (TOP VIEW)

NOTES:

1. Electrical Characteristics

- 1). Insulation Resistance: 500MΩ Min, 500V DC for 1 minute;
- 2). Contact Resistance: 30mΩ MAX;
- 3). Current Rating: 1.5A Max;
- 4). Voltage Rating: 150V AC;
- 5). Dielectric Voltage: 1000Vrms At 1mA 60Sec. Min.

2. Physical Characteristics

- 1). Housing: PBT Glass Filled UL94V-0, Black Color, Soldering Temperature: 235°C for 5 Sec;
- 2). Spring Wire: 0.45mm Dia Phosphor Bronze, Gold Flash Over Nickel;
- 3). Shielded: Brass Plating Nickel;
- 4). Temperature Range: -40°C~+85°C;
- 5). Durability: 750 Mating Cycles Min.

RoHS compliant
Unit: mm

Scale	Free						Date	Name	Customer-No.
TOLERANCE						Drawn	30.10.2019	Segal	ASSMANN WSW-No. A-MJH-8-EG-GTT-S1
.x	±0.25					Approved	30.10.2019	Segal	
.xx	±0.13								
.xxx	±0.05								
DIM	TOL								Drawing-No.
									ASS 8501A CO
		©	Drawn	30.10.2019	Segal	ASSMANN WSW components			rev00
Angle	±0.5°	Id.	Modification	Date	Name			Replace	Sheet