

1

2

3

4

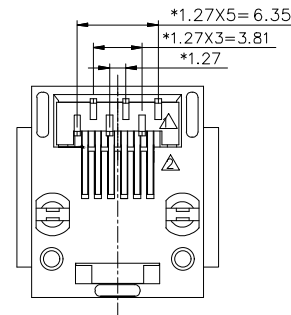
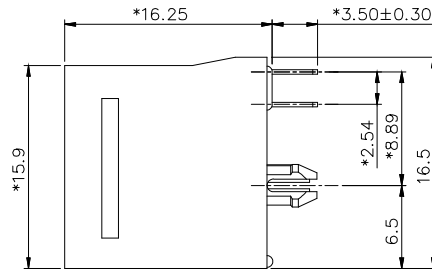
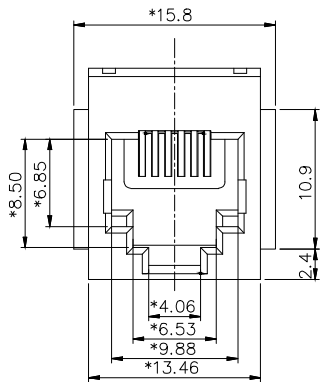
5

6

7

A

A



NOTES:

MATERIAL

- 1.1 Housing&Insert Material : High Temp,UL94V-0,BK
- 1.2 Contact Material : Phosphor bronze,t=0.35mm
- 1.3 Contact Plating: 3u" Gold Over Ni

ELECTRICAL

- 2.1 Current Rating : 1.5AMP
- 2.2 Rating Voltage : 125VAC
- 2.3 Withstand Voltage : 750VAC RMS 50Hz,1minute
- 2.4 Contact Resistance : 30mΩ Max
- 2.5 Insulation Resistance: 1000MΩ Min

ENVIRONMENTAL

- 3.1 Operation Temperature: -40°C to +85°C
- 3.2 Storage Temperature: -40°C to +85°C
- 3.3 Mechanical life cycle: 1000 cycles Min
- 3.4 PCB retention pre-solder force: 1LB Min
- 3.5 PCB retention post-solder force: 10LBS Min
- 3.6 Soldering Temperature: +260°C max

Package: Tray

Mates with modular plug conforming to TIA-1096-A.

B

B

C

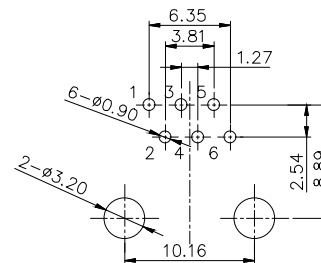
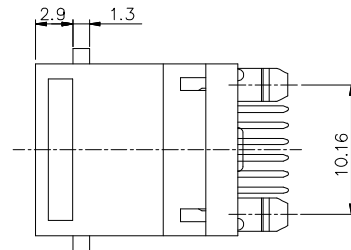
C

D

D

E

E



**P.C.B Layout
Component side shown**

F

F

G

G

RoHS compliant

Unit:mm

Scale	Free
TOLERANCE	
X.X	±0.20
X.XX	±0.15
X.XXX	±0.10
DIM	TOL
X.°	±5°
Angle	TOL

Drawn	30.10.2020	Daniel
Approved	30.10.2020	Daniel
Modification	Date	Name



Description: Modular Jacks Top-entry, THT	
ASSMANN WSW-No. A-MJH-6-EG-GTP51	
Drawing-No. ASS 8715 CO	rev00
Customer-No.	SHEET 1 / 1

1

2

3

4

5

6

7

SV4981