

1

2

3

4

5

6

7

A

B

C

D

E

F

G

H

A

B

C

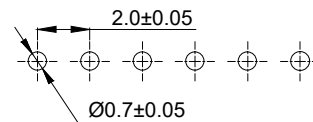
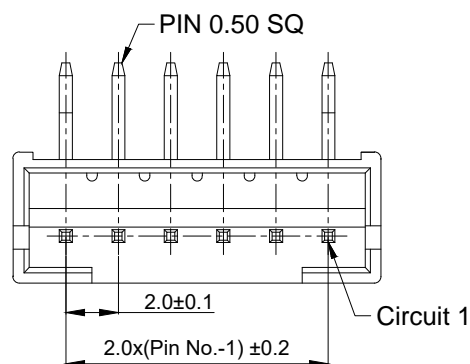
D

E

F

G

H



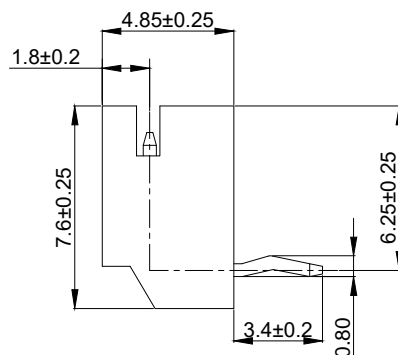
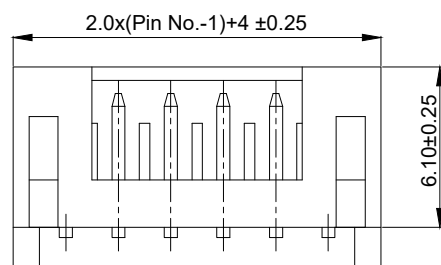
PCB LAYOUT

Notes:

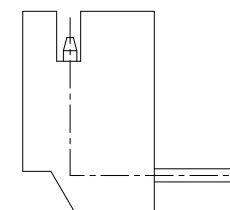
Insulator Material: Nylon 66,White UL94V-0;
 Contact Pin: Brass, Tin over Nickel;
 Voltage Rating: 100V AC,DC;
 Current Rating: 2A AC, DC;
 Insulation Resistance: 1000MΩ Min;
 Withstanding Voltage: 800V AC/minute;
 Operation Temperature: -40°C to +105°C;
 Packing: Bag

⑦ Order code:A-WBP-K001EA-xxTBxx

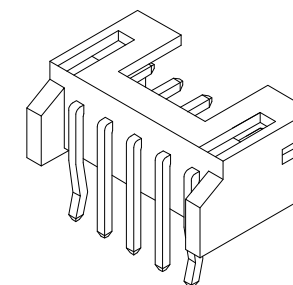
01:TYPE 1 UL No.:E198287 ⑨
 02:TYPE 2



TYPE1



⑦ TYPE2



RoHS compliant

Unit:mm

Scale Free

TOLERANCE

X. ±0.35

X.X ±0.25

X.XX ±0.20

X.XXX ±0.15

DIM TOL

Angle TOL

⑩ Update the dimension and tolerance

03.07.2024

Peter

Date

Name

Description: Wire to board Wafer connector
Pitch 2.0mm 90° THT

⑨ Add UL E-No. on page 1,2,4

03.11.2022

Peter

Drawn

21.01.2021

Segal

⑧ Add P/N and the page 3

03.11.2022

Peter

Approved

03.07.2024

Peter

ASSMANN WSW-No.

A-WBP-K001EA-xxTBxx

⑦ Update

22.04.2022

Daniel

⑥ Add PN and sheet 1 & 2 & 3, add dimension

15.02.2022

Daniel

⑤ Change the design of terminal and update the dimension and tolerance

06.01.2022

Peter

Drawing-No.

ASS 8874 CO

rev10

Customer-No.

SHEET
1 / 8

1

2

3

4

5

6

7

1

2

3

4

5

6

7

A

A

B

B

C

C

D

D

E

E

F

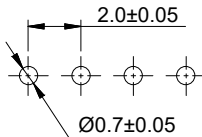
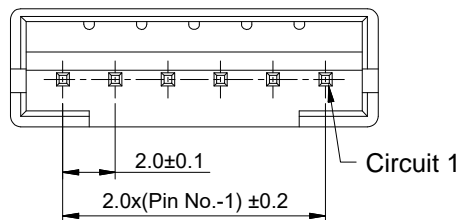
F

G

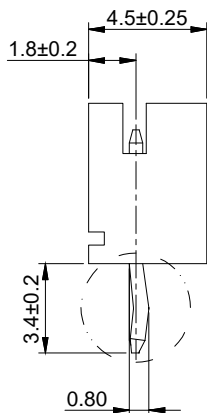
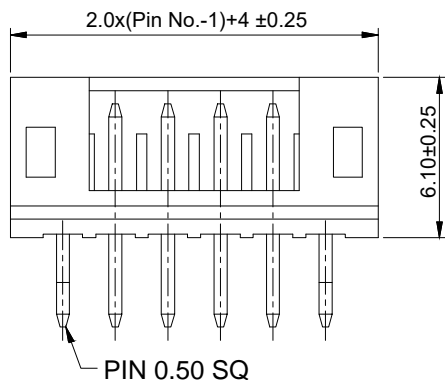
G

H

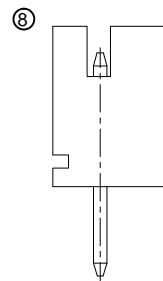
H



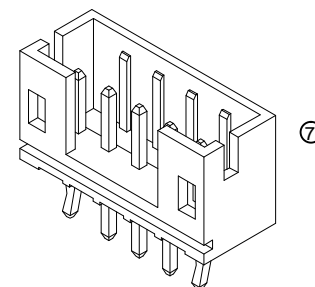
PCB LAYOUT



TYPE1



TYPE2



Notes:
 Insulator Material: Nylon 66, White UL94V-0;
 Contact Pin: Brass, Tin over Nickel;
 Voltage Rating: 100V AC,DC;
 Current Rating: 2A AC, DC;
 Insulation Resistance: 1000MΩ Min;
 Withstanding Voltage: 800V AC/minute;
 Operation Temperature: -40°C to +105°C;
 Packing: Bag

⑧ Order Code:A-WBP-K001EG-xxTBxx

⑨ 01:TYPE 1 UL No.:E198287
 02:TYPE 2

RoHS compliant

Unit:mm

Scale Free

TOLERANCE

X. ±0.35

X.X ±0.25

X.XX ±0.20

X.XXX ±0.15

DIM TOL

Angle TOL

⑩ Update the dimension and tolerance

03.07.2024

Peter

Date

Name

Description: Wire to board Wafer connector Pitch 2.0mm 180° THT

⑨ Add UL E-No. on page 1,2,4

03.11.2022

Peter

Drawn

21.01.2021

Segal

⑧ Add P/N and the page 3

03.11.2022

Peter

Approved

03.07.2024

Peter

ASSMANN WSW-No.
A-WBP-K001EG-xxTB01

⑦ Update

22.04.2022

Daniel

⑥ Add PN and sheet 1 & 2 & 3, add dimension

15.02.2022

Daniel

⑤ Change the design of terminal and update the dimension and tolerance

06.01.2022

Peter

Id.

Modification

Date

Name



A company of BCS

Drawing-No.
ASS 8874 CO rev10

Customer-No. SHEET 2 / 8

1

2

3

4

5

6

7

1

2

3

4

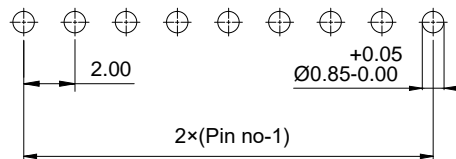
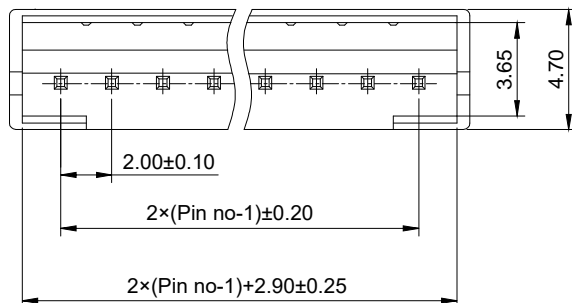
5

6

7

A

⑧



Recommended P.C.B Layout (Top Side)
(PCB Board Tolerance±0.05)

Notes:

Insulator Material: PA46, Natural, UL94V-0;
 Contact Pin: Brass, Tin over Nickel;
 Voltage Rating: 100V AC,DC;
 Current Rating: 2.0A;
 Insulation Resistance: 1000MΩ Min;
 Withstanding Voltage: 800V AC/minute;
 Contact Resistance: 20mΩ Max
 Operation Temperature: -40°C to +105°C;
 Packing: PE bag
 Soldering Temperature: +360°C, 2-3S
 Order code: A-WBP-K001EG-xxTBxx

03:TYPE 1
 04:TYPE 2

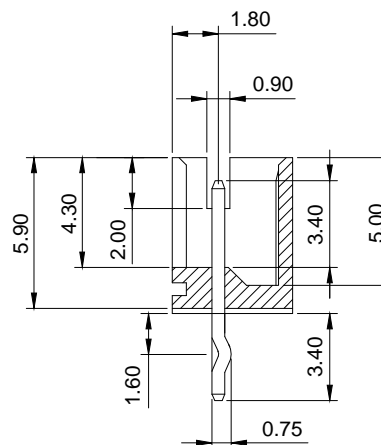
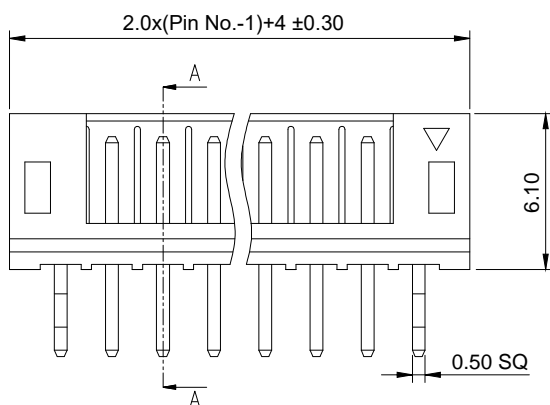
B

C

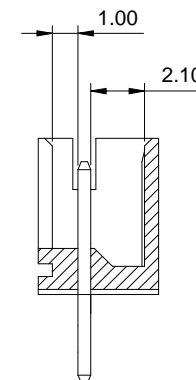
D

E

F



TYPE1



TYPE2

G

RoHS compliant

Unit:mm

Scale	Free
-------	------

TOLERANCE	
-----------	--

X.	±0.35
----	-------

X.X	±0.25
-----	-------

X.XX	±0.20
------	-------

X.XXX	±0.15
-------	-------

DIM	TOL
-----	-----

Angle	TOL
-------	-----

⑩	Update the dimension and tolerance	03.07.2024	Peter		Date	Name
⑨	Add UL E-No. on page 1,2,4	03.11.2022	Peter	Drawn	21.01.2021	Segal
⑧	Add P/N and the page 3	03.11.2022	Peter	Approved	03.07.2024	Peter
⑦	Update	22.04.2022	Daniel			
⑥	Add PN and sheet 1 & 2 & 3, add dimension	15.02.2022	Daniel			
⑤	Change the design of terminal and update the dimension and tolerance	06.01.2022	Peter			
Id.	Modification	Date	Name			

Description: Wire to board Wafer connector
Pitch 2.0mm 180° THT

ASSMANN WSW-No.
A-WBP-K001EG-xxTBxx

Drawing-No. ASS 8874 CO	rev10
-----------------------------------	-------

Customer-No.	SHEET 3 / 8
--------------	----------------

H

1

2

3

4

5

6

7

A

B

C

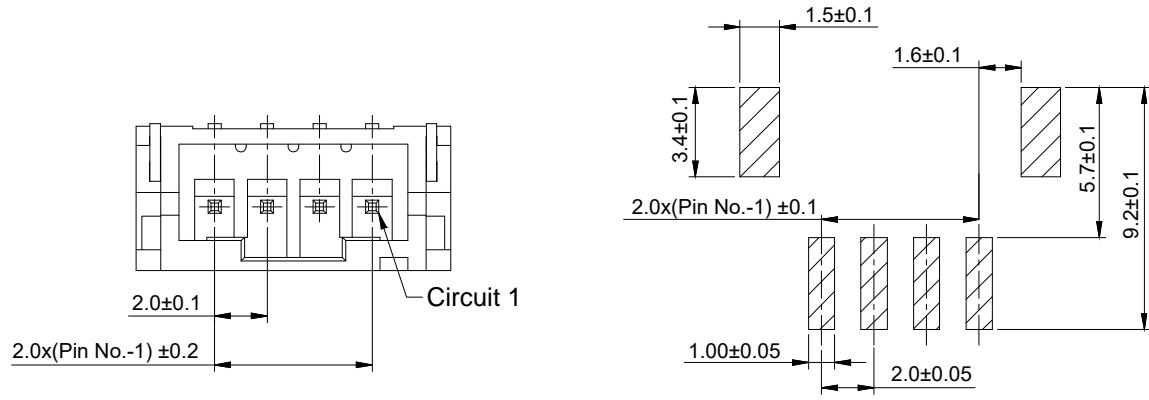
D

E

F

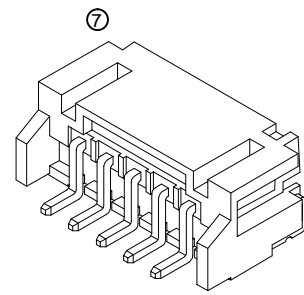
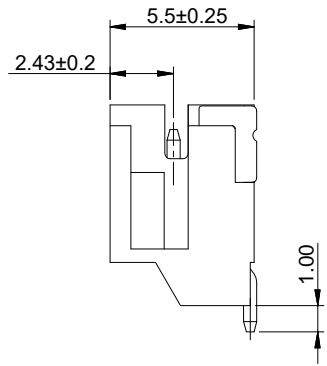
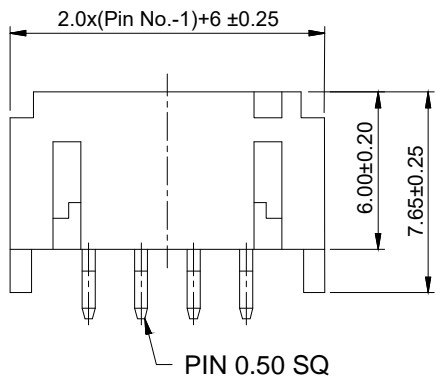
G

H



PCB LAYOUT

Notes:
 ⑦ Insulator Material: Nylon6T, color natural, UL94V-0;
 Contact Pin: Brass, Tin over Nickel;
 Voltage Rating: 100V AC,DC;
 Current Rating: 2A AC, DC;
 Insulation Resistance: 1000MΩ Min;
 Withstanding Voltage: 800V AC/minute;
 Operation Temperature: -40°C to +105°C;
 Packing: Tape&Reel.



G	RoHS compliant Unit:mm ⑨ File No.: E198287	Scale	Free	⑩	Update the dimension and tolerance	03.07.2024	Peter		Date	Name	Description: Wire to board Wafer connector Pitch 2.0mm 90° SMT	
		TOLERANCE		⑨	Add UL E-No. on page 1,2,4	03.11.2022	Peter	Drawn	21.01.2021	Segal		
H		X.	±0.35	⑧	Add P/N and the page 3	03.11.2022	Peter	Approved	03.07.2024	Peter	ASSMANN WSW-No.	
		X.X	±0.25	⑦	Update	22.04.2022	Daniel				A-WBP-K001EA-xxSR01	
		X.XX	±0.20	⑥	Add PN and sheet 1 & 2 & 3, add dimension	15.02.2022	Daniel	 A company of	Drawing-No.		ASS 8874 CO	rev10
		X.XXX	±0.15	⑤	Change the design of terminal and update the dimension and tolerance	06.01.2022	Peter		Customer-No.			
		DIM	TOL	Id.	Modification	Date	Name					
		Angle	TOL									

1

2

3

4

5

6

7

A

A

B

B

C

C

D

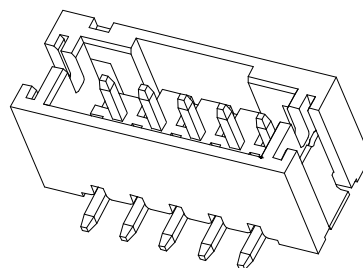
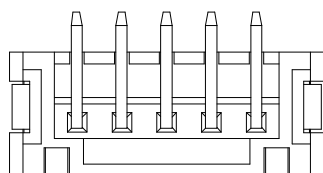
D

E

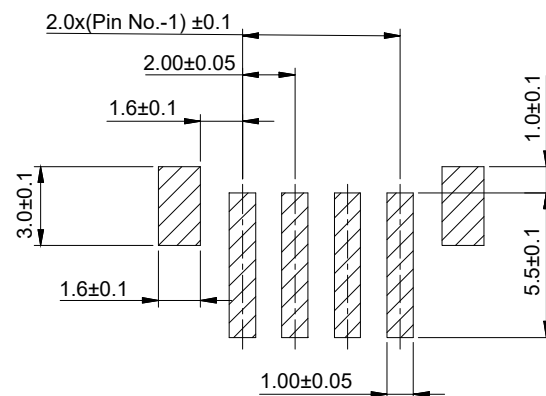
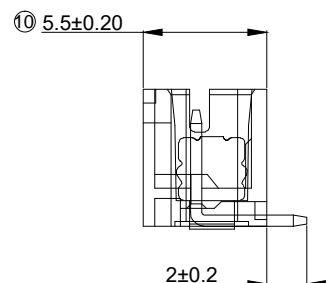
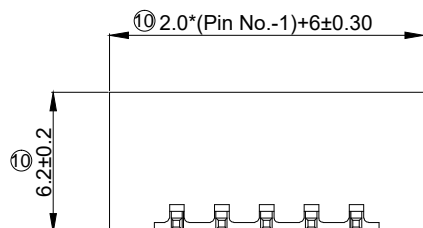
E

F

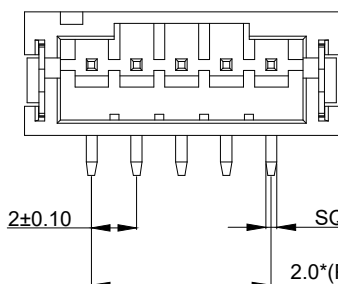
F



Notes:
 ⑦ Insulator Material: Nylon6T, color natural, UL94V-0;
 Contact Pin: Brass, Tin over Nickel;
 Voltage Rating: 100V AC,DC;
 Current Rating: 2A AC, DC;
 Insulation Resistance: 1000MΩ Min;
 Withstanding Voltage: 800V AC/minute;
 Operation Temperature: -40°C to +105°C;
 Packing: Tape&Reel.



PCB LAYOUT



G

G

RoHS compliant

Unit:mm

Scale Free

TOLERANCE

X. ±0.35



X.X ±0.25

X.XX ±0.20

X.XXX ±0.15

DIM TOL

Angle TOL

Id.	Modification	Date	Name	Date	Name	Description:
⑩	Update the dimension and tolerance	03.07.2024	Peter			Wire to board Wafer connector Pitch 2.0mm 180° SMT
⑨	Add UL E-No. on page 1,2,4	03.11.2022	Peter	Drawn	21.01.2021	Segal
⑧	Add P/N and the page 3	03.11.2022	Peter	Approved	03.07.2024	Peter
⑦	Update	22.04.2022	Daniel			
⑥	Add PN and sheet 1 & 2 & 3, add dimension	15.02.2022	Daniel			
⑤	Change the design of terminal and update the dimension and tolerance	06.01.2022	Peter			
						Drawing-No. ASS 8874 CO
				Customer-No.		rev10 SHEET 5 / 8

H

H

1

2

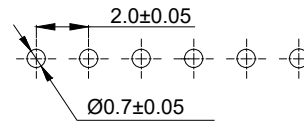
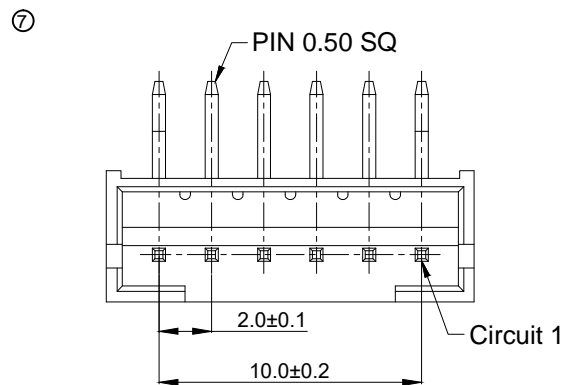
3

4

5

6

7



PCB LAYOUT

Notes:

Insulator Material: LCP, White UL94V-0;

Contact Pin: Brass, Tin over Nickel;

Voltage Rating: 100V AC,DC;

Current Rating: 2A AC, DC;

Insulation Resistance: 1000MΩ Min;

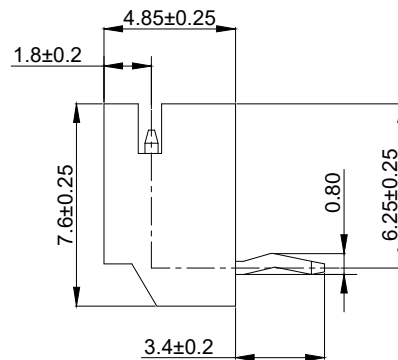
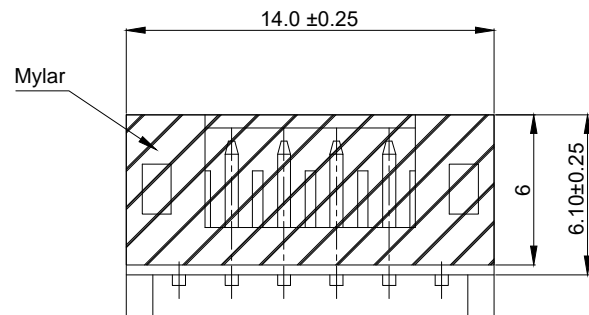
Withstanding Voltage: 800V AC/minute;

Operation Temperature: -40°C to +105°C;

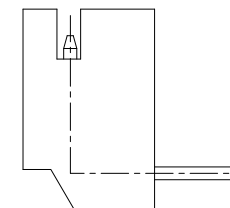
Packing: Tape&Reel+Mylar;

Order code:A-WBP-K001EA-xxRRxx

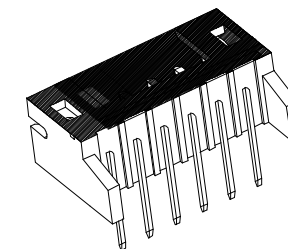
01:TYPE 1
02:TYPE 2



TYPE1



TYPE2



RoHS compliant

Unit:mm

Scale Free

TOLERANCE

X. ±0.35

X.X ±0.25

X.XX ±0.20

X.XXX ±0.15

DIM TOL

Angle TOL

Id.	Modification	Date	Name	Date	Name	Description:
⑩	Update the dimension and tolerance	03.07.2024	Peter			Wire to board Wafer connector Pitch 2.0mm 90° THR
⑨	Add UL E-No. on page 1,2,4	03.11.2022	Peter	Drawn	Segal	
⑧	Add P/N and the page 3	03.11.2022	Peter	Approved	Peter	ASSMANN WSW-No.
⑦	Update	22.04.2022	Daniel			A-WBP-K001EA-xxRRxx
⑥	Add PN and sheet 1 & 2 & 3, add dimension	15.02.2022	Daniel	 A company of 		Drawing-No.
⑤	Change the design of termianl and update the dimension and tolerance	06.01.2022	Peter			ASS 8874 CO
				Customer-No.		SHEET 6 / 8

1

2

3

4

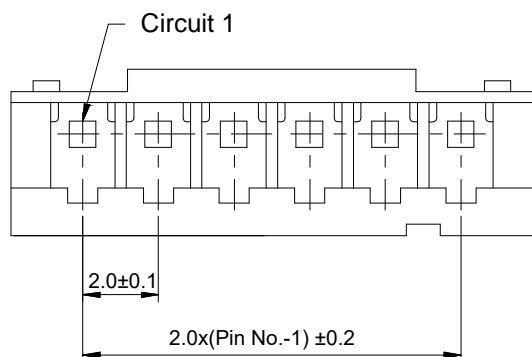
5

6

7

A

A



Notes:

Insulator Material: Nylon66 White UL94V-0;
 Voltage Rating: 250V AC,DC;
 Current Rating: 5A AC, DC;
 Insulation Resistance: 1000MΩ Min;
 Withstanding Voltage: 1500V AC/minute;
 Operation Temperature: -25°C to +85°C;
 Packing: PE bag.

- ④ Notch location:
 2 ~ 5pin without notch
 6 ~ 10pin notch is located between the 5th pin and the 6th pin

B

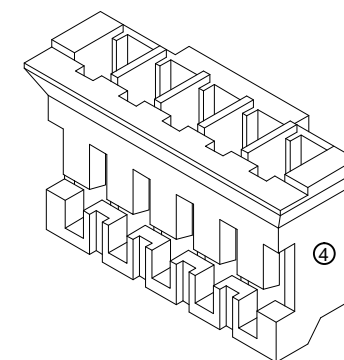
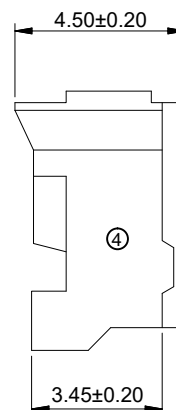
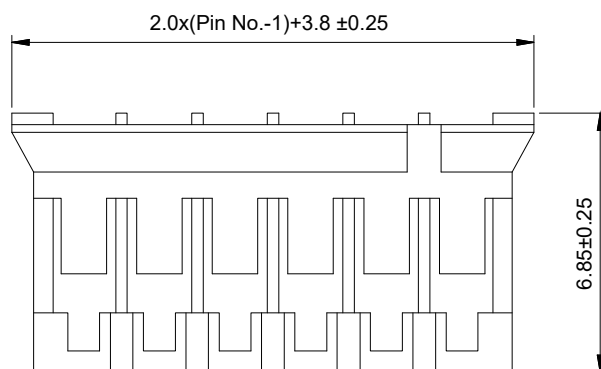
B

C

C

D

D



E

E

F

F

G

G

RoHS compliant

Unit:mm

Scale Free

TOLERANCE

X. ±0.35

X.X ±0.25

X.XX ±0.20

X.XXX ±0.15

DIM TOL

Angle TOL

⑩ Update the dimension and tolerance

03.07.2024

Peter

Date

Name

Description: Wire to board Housing
Pitch 2.0mm 180°

⑨ Add UL E-No. on page 1,2,4

03.11.2022

Peter

Drawn

21.01.2021

Segal

⑧ Add P/N and the page 3

03.11.2022

Peter

Approved

03.07.2024

Peter

ASSMANN WSW-No.

A-WBH-K001EG-xxCB01

⑦ Update

22.04.2022

Daniel

H

H

⑥ Add PN and sheet 1 & 2 & 3, add dimension

15.02.2022

Daniel

⑤ Change the design of terminal and update the dimension and tolerance

06.01.2022

Peter

ASSMANN
 WSW components

Drawing-No.

ASS 8874 CO

rev10

Customer-No.

SHEET
7 / 8

A company of BCS

1

2

3

4

5

6

7

1

2

3

4

5

6

7

A

A

B

B

C

C

D

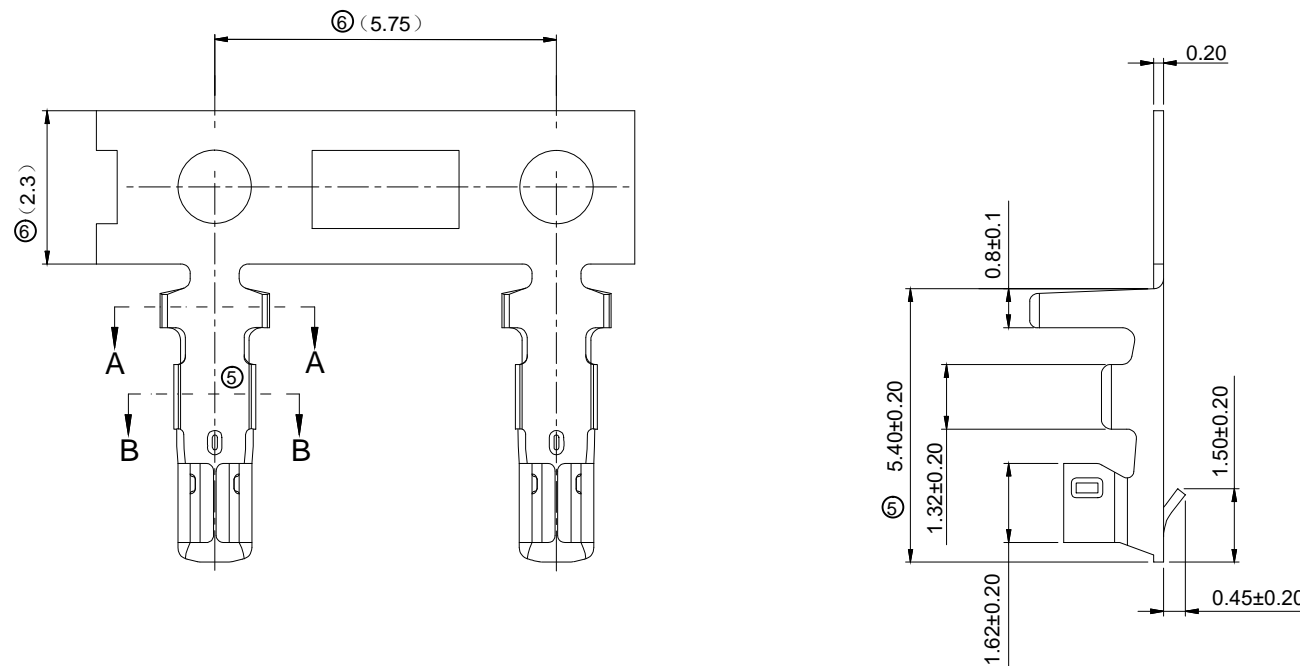
D

E

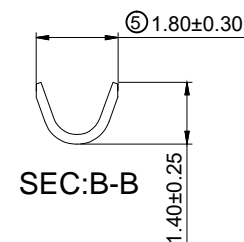
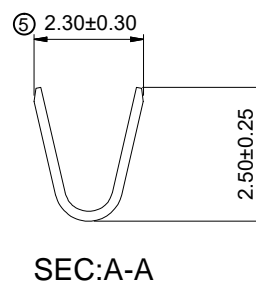
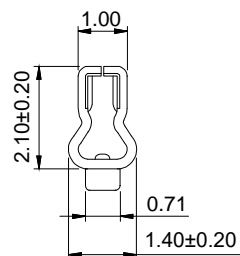
E

F

F



Notes:
 Material: Phosphor Bronze,
 Plating: Tin over Nickel;
 Voltage Rating: 100V AC,DC;
 Current Rating: 2A AC, DC;
 Contact Resistance: 10mΩ Max;
 Withstanding Voltage: 800V AC/minute;
 Operation Temperature: -40°C to +105°C;
 Wire Range: #24-#30;
 Packing: Reel




G

G

RoHS compliant

Unit:mm

Scale	Free	⑩	Update the dimension and tolerance	03.07.2024	Peter		Date	Name
TOLERANCE		⑨	Add UL E-No. on page 1,2,4	03.11.2022	Peter	Drawn	21.01.2021	Segal
X.	±0.35	⑧	Add P/N and the page 3	03.11.2022	Peter	Approved	03.07.2024	Peter
X.X	±0.25	⑦	Update	22.04.2022	Daniel			
X.XX	±0.20	⑥	Add PN and sheet 1 & 2 & 3, add dimension	15.02.2022	Daniel			
X.XXX	±0.15	⑤	Change the design of terminal and update the dimension and tolerance	06.01.2022	Peter			
DIM	TOL	Id.	Modification	Date	Name			
Angle	TOL							

Description: Wire to board Terminal
Pitch 2.0mm 180°

ASSMANN WSW-No.

A-WBT-K001EG-01CR01

Drawing-No.

ASS 8874 CO

rev10

Customer-No.

SHEET
8 / 8

1

2

3

4

5

6

7

H