

1

2

3

4

5

6

7

A

A

B

B

C

C

D

D

E

E

F

F

NOTES:

1.ELECTRICAL CHARACTERISTICS:

1-1.CURRENT RATING:1.5A MAX.

1-2.VOLTAGE RATING:150V MAX.

1-3.INSULATION RESISTANCE:1000MOhm MIN.

1-4.DIELECTRIC WITHSTANDING VOLTAGE:
1000V CONTACT TO CONTACT.

1-5.LED RATINGS: FORWARD VOLTAGE: 2.2 VOLTS TYPICAL.
REVERSE VOLTAGE: 5 VOLTS MAXIMUM.

2.MECHANICAC CHARACTERISTICS

2-1.MATING FORCES:
5 POUNDS MAX. WITH LATCH DEPRESSED.

2-2.UNMATING FORCES:
10 POUNDS MAX. WITH LATCH DEPRESSED
AT AN ADVANTAGEOUS ANGLE.

2-3.OPERATING TEMPERATURE: -40°C TO +85°C

2-4.DURABILITY:5000 CYCLES

2-5.MATES WITH MODULAR PLUG CONFORMING TO
TIA-1096-A.SUBPART F

2-6. LED SIZE: 4X3.0X2.0, P=2.54mm.

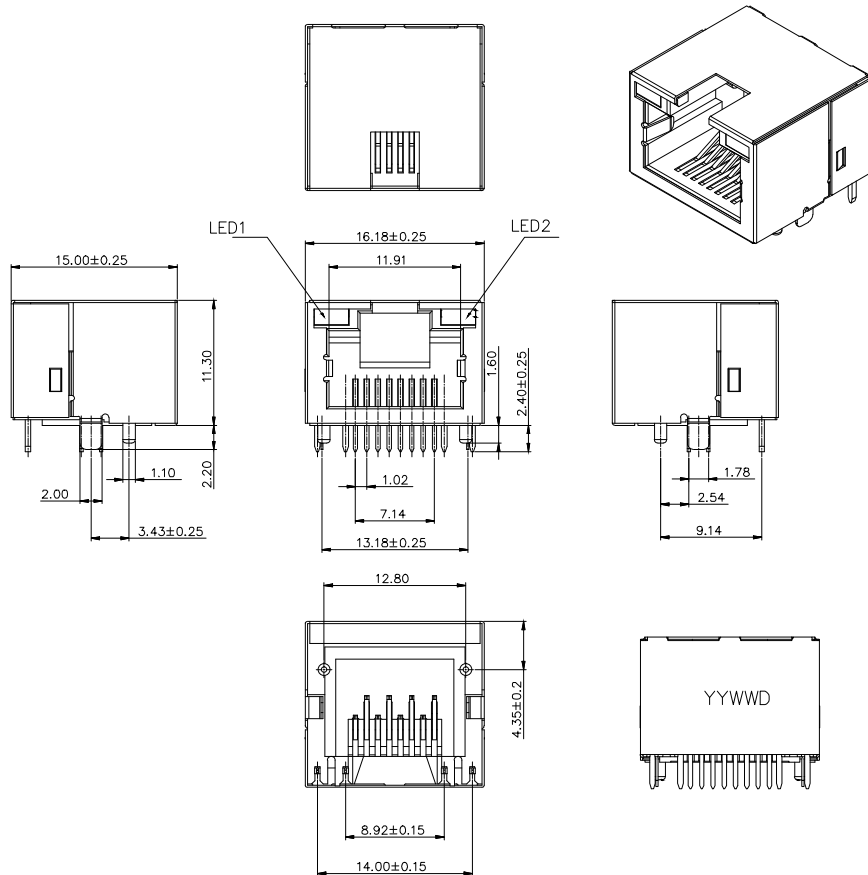
3.MATERIAL:

3-1.HOUSING: PA10T HF 94V-0 STAND COLOR-BLACK.

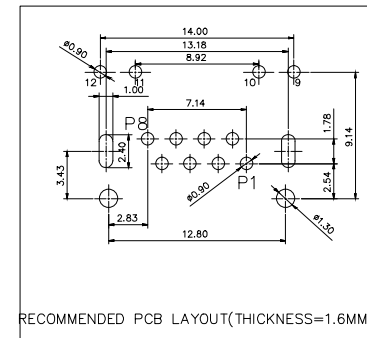
3-2.CONTACT:PHOSPHO-COPPER
6u" GOLD PLATING IN THE CONTACT AREA .
80~160u" TIN ON SOLDER TAILS.
30~80u" NICKEL UNDERPLATED OVER ALL

3-3.SHELL: STAINLESS
PLATED:30~80u" NICKEL PLATED OVER ALL

3-4.LED:PLATED TIN



LED DISPLAY		
PART NO.	LED 1	LED2
A-MIL-8-EA-GRP-SYG2	YELLOW 12 11	GREEN 10 9
A-MIL-8-EA-GRP-SGG1	GREEN 12 11	GREEN 10 9
A-MIL-8-EA-GRP-SGY1	GREEN 12 11	YELLOW 10 9



RoHS compliant

Unit:mm

Scale	Free
TOLERANCE	
X.X	±0.20
X.XX	±0.15
X.XXX	±0.10
DIM	TOL
X.°	±5°
Angle	TOL

Drawn	21.06.2021	Luca
Id.	Modification	Date
		Name



Description: Modular Connector	
RJ45 / LED / SIDE ENTRY JACK / SHIELD	
ASSMANN WSW-No.	
A-MJL-8-EA-GRP-Sxxx	
Drawing-No.	ASS 8986 CO
Customer-No.	rev00
	SHEET 1 / 1

1

2

3

4

5

6

7