

1 2 3 4 5 6 7

A

B

C

D

E

F

A

B

C

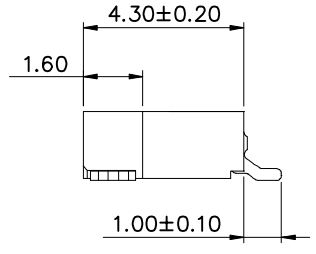
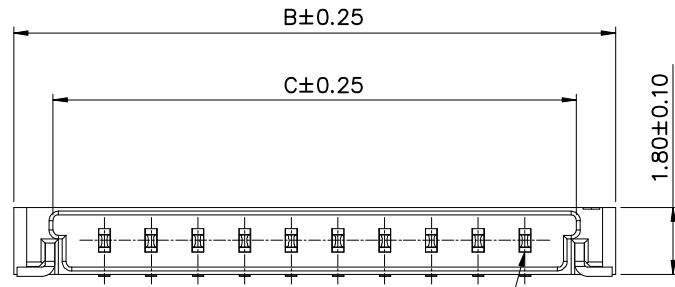
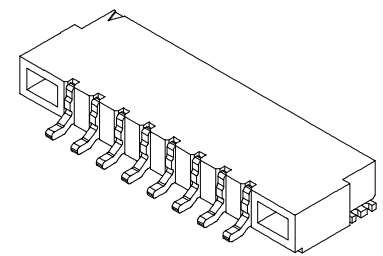
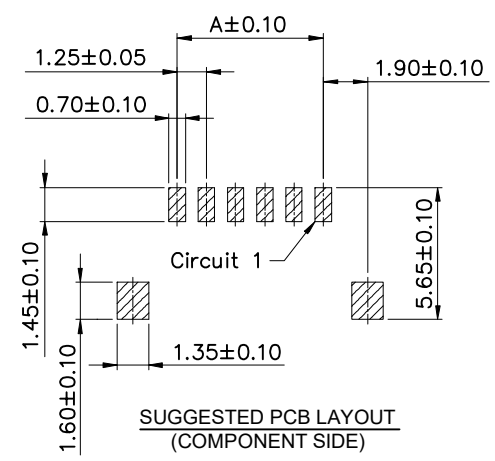
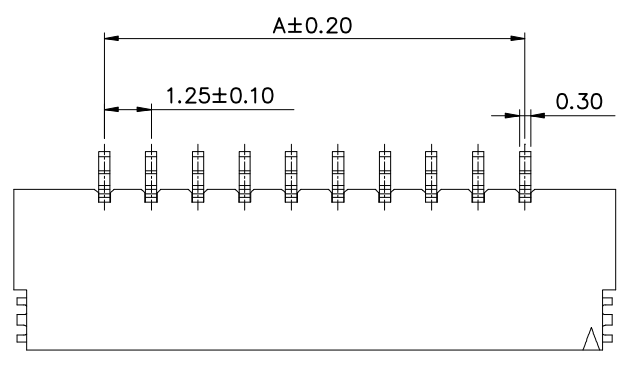
D

E

F

**NOTE:**

- 1.MATERIAL
  - 1.1 Insulator:Nylon 6T,UL94V-0,White
  - 1.2 Contact:Brass,Au over Nickel
  - 1.3 Solder Tabs:Brass,Tin over Nickel
- 2.ELECTRIC
  - 2.1 Voltage Rating:150V AC/DC
  - 2.2 Current Rating:1A AC/DC
  - 2.3 Withstanding Voltage:500V AC/minute
  - 2.4 Insulation Resistance:500MΩ Min.
- 3.Temperature Range:-40°C To +105°C
- 4.Packing:Tape&Reel



Poles	Part No.	Dimensions (mm)		
		A	B	C
02	A-WBP-D001EA-02SR01	1.25	6.10	4.01
03	A-WBP-D001EA-03SR01	2.50	7.35	5.26
04	A-WBP-D001EA-04SR01	3.75	8.60	6.51
05	A-WBP-D001EA-05SR01	5.00	9.85	7.76
06	A-WBP-D001EA-06SR01	6.25	11.10	9.01
08	A-WBP-D001EA-08SR01	8.75	13.60	11.51
10	A-WBP-D001EA-10SR01	11.25	16.10	14.01
15	A-WBP-D001EA-15SR01	17.50	22.35	20.26
20	A-WBP-D001EA-20SR01	23.75	28.60	26.51
25	A-WBP-D001EA-25SR01	30.00	34.85	32.76
30	A-WBP-D001EA-30SR01	36.25	41.10	39.01

G

H

**RoHS compliant**  
unit:mm

Scale	Free
<b>TOLERANCE</b>	
X.	±0.35
X.X	±0.25
X.XX	±0.20
X.XXX	±0.15
DIM	TOL
Angle	TOL

Drawn	12.27.2021	Peter	
Approved	12.27.2021	Peter	
①	Drawn	12.27.2021	Peter
Id.	modification	Date	Name

Description: Wire to Board Wafer Pitch1.25mm 90° SMT	
ASSMANN WSW-NO. <b>A-WBP-D001EA-xxSR01</b>	
Drawing-No. <b>ASS 9186 CO</b>	rev00
Customer-No.	SHEET 1 / 3

1 2 3 4 5 6 7

1

2

3

4

5

6

7

A

A

B

B

C

C

D

D

E

E

F

F

NOTE:

1.MATERIAL

1.1 Insulator:Nylon 66,UL94V-0,Black

2.ELECTRIC

2.1 Voltage Rating:150V AC/DC

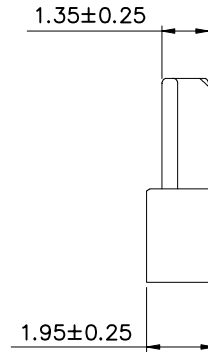
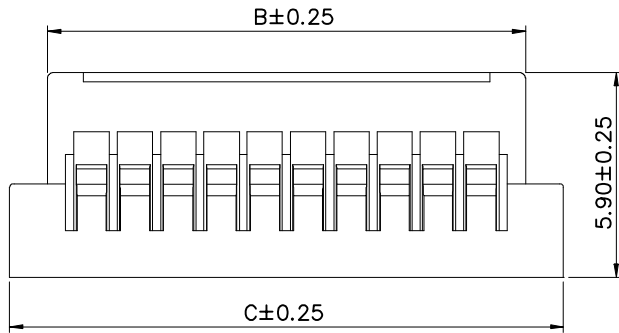
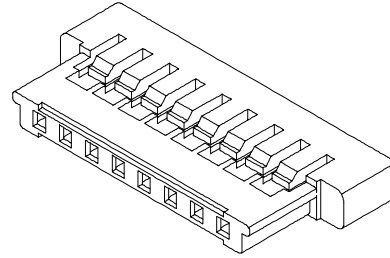
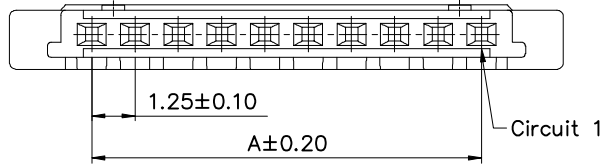
2.2 Current Rating:1A AC/DC

2.3 Withstanding Voltage:500V AC/minute

2.4 Insulation Resistance:500MΩ Min.

3.Temperature Range:-40°C To +105°C

4.Packing:PE bag



Poles	Part No.	Dimensions (mm)		
		A	B	C
02	A-WBH-D001EG-02CB01	1.25	3.80	6.00
03	A-WBH-D001EG-03CB01	2.50	5.05	7.25
04	A-WBH-D001EG-04CB01	3.75	6.30	8.50
05	A-WBH-D001EG-05CB01	5.00	7.55	9.75
06	A-WBH-D001EG-06CB01	6.25	8.80	11.00
08	A-WBH-D001EG-08CB01	8.75	11.30	13.50
10	A-WBH-D001EG-10CB01	11.25	13.80	16.00
15	A-WBH-D001EG-15CB01	17.50	20.05	22.25
20	A-WBH-D001EG-20CB01	23.75	26.30	28.50
25	A-WBH-D001EG-25CB01	30.00	32.55	34.75
30	A-WBH-D001EG-30CB01	36.25	38.80	41.00

G

G

RoHS compliant

unit:mm

Scale Free

TOLERANCE

X. ±0.35

X.X ±0.25

X.XX ±0.20

X.XXX ±0.15

DIM TOL

Angle TOL

①

Drawn

12.27.2021

Peter

Id.

modification

Date

Name

Date

Name

Description: Wire to Board Housing  
Pitch1.25mm

ASSMANN WSW-NO.

A-WBH-D001EG-xxCB01

Drawing-No.

ASS 9186 CO

rev00

Customer-No.

SHEET  
2 / 3



1

2

3

4

5

6

7

1

2

3

4

5

6

7

A

B

C

D

E

F

A

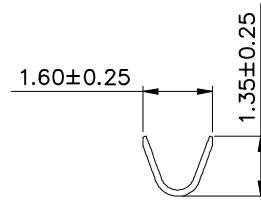
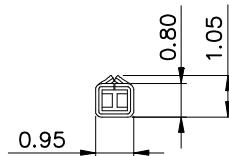
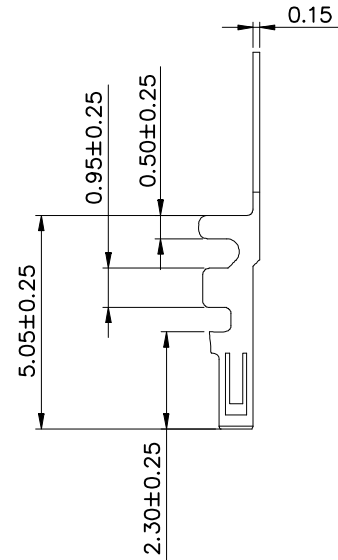
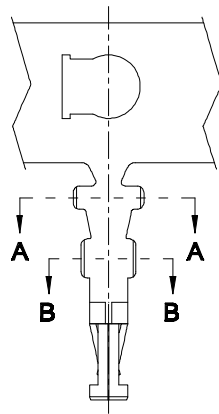
B

C

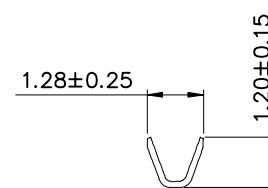
D

E

F



SEC:A-A



SEC:B-B

NOTE:

1.MATERIAL

1.1 Insulator:Phosphor Bronze,Au over Nickel

2.ELECTRIC

2.1 Voltage Rating:150V AC/DC

2.2 Current Rating:1A AC/DC

2.3 Withstanding Voltage:500V AC/minute

2.4 Insulation Resistance:500MQ Min.

2.5 Contact Resistance:30mΩ Max

3.Temperature Range:-40°C To +105°C

4.Applicable Wire:AWG#28-#32

5.Packing:Reel

G

H

RoHS compliant

unit:mm

Scale	Free
TOLERANCE	
X.	±0.35
X.X	±0.25
X.XX	±0.20
X.XXX	±0.15
DIM	TOL
Angle	TOL

Drawn	12.27.2021	Peter
Id.	modification	Date Name

Date: 12.27.2021  
 Name: Peter  
 Drawn: 12.27.2021  
 Approved: 12.27.2021  
 Peter  
**ASSMANN**  
 WSW components

Description: Wire to Board Terminal Pitch 1.25mm	
ASSMANN WSW-NO. <b>A-WBT-D001EG-01CR01</b>	
Drawing-No. <b>ASS 9186 CO</b>	rev00
Customer-No.	SHEET 3 / 3

1

2

3

4

5

6

7