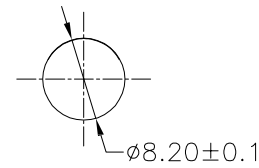


NOTE:

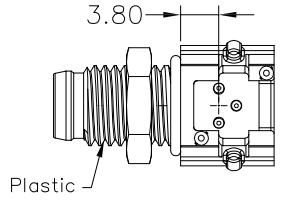
1. MATERIAL:
 1.1 Insulation plastic: PA66+GF
 1.2 Contact Pin: Brass with Gold plating
 1.3 Coupling nut/screw: Brass with Nickel plating

2. Degree of protection: IP67
 3. Operating temperature: -25°C to +85°C
 4. Protected from dust and water during immersion, resistant to many oils and chemical etc

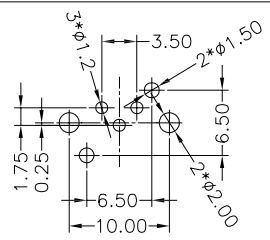
Order Code: A-M08-xx-MAMx-GTB1
 — A: A Coding
 — B: B Coding
 — Number of contact



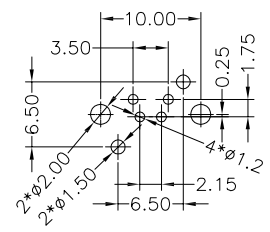
Recommended Panel Cut-Out



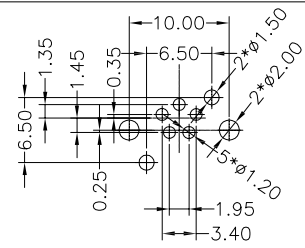
Recommended PCB Layout



A-M08-03-MAMA-GTB1



A-M08-04-MAMA-GTB1



A-M08-05-MAMB-GTB1

Part Number	Contacts	Rated	voltage	Rated current	Contact Resistance
		A/C	D/C		
A-M08-03-MAMA-GTB1		60V	60V	3A	10mΩ
A-M08-04-MAMA-GTB1		60V	60V	3A	10mΩ
A-M08-05-MAMB-GTB1		30V	30V	3A	10mΩ

RoHS compliant
unit:mm

Scale	Free
TOLERANCE	
.X	±0.50
.XX	±0.20
DIM	TOL
X.°	±2.0°
.X°	±1.0°
Angle	TOL

Drawn	21.04.2022	Peter	ASSMANN WSW components
Approved	21.04.2022	Peter	
①	Drawn	21.04.2022	Peter
Id.	modification	Date	Name

Description: M8 Circular Connector Male/plug 90° Angle	
ASSMANN WSW-NO. A-M08-xx-MAMx-GTB1	
Drawing-No. ASS 9370 CO	rev00
Customer-No.	SHEET 1 / 2

1

2

3

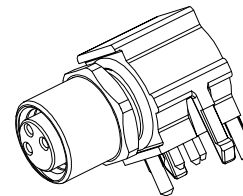
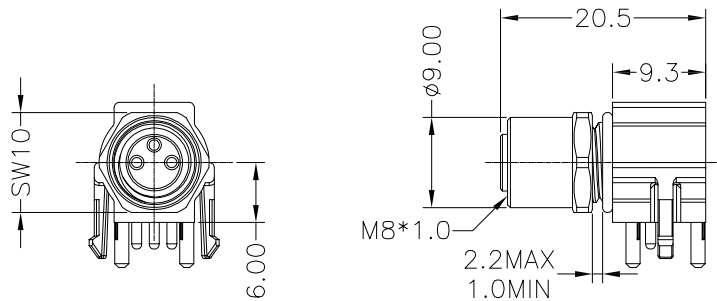
4

5

6

7

A



NOTE:

- 1.MATERIAL:
 - 1.1 Insulation plastic: PA66+GF
 - 1.2 Contact Pin: Phosphor bronze with Gold plating
 - 1.3 Coupling nut/screw: Brass with Nickel plating

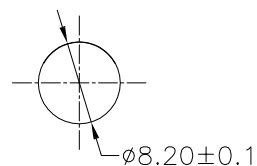
- 2.Degree of protection: IP67
- 3.Operating temperature: -25°C to +85°C
- 4.Protected from dust and water during immersion resistant to many oils and chemical etc

Order Code:A-M08-xx-FAMx-GTB3

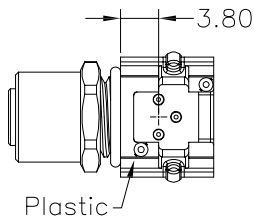
- └ A:A Coding
- └ B:B Coding
- └ Number of contact

B

C



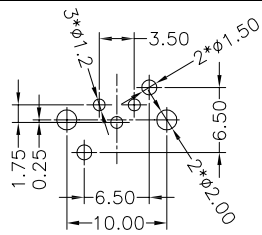
Recommended Panel Cut-Out



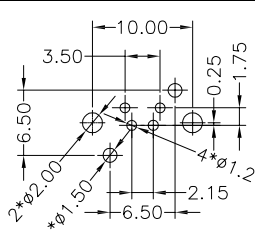
Plastic

D

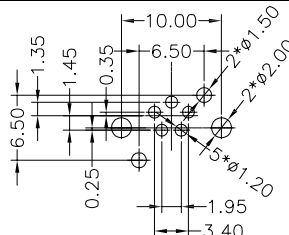
Recommended PCB Layout



A-M08-03-FAMA-GTB3



A-M08-04-FAMA-GTB3



A-M08-05-FAMB-GTB3

E

F

Part Number	Contacts	Rated	voltage	Rated current	Contact Resistance
		A/C	D/C		
A-M08-03-FAMA-GTB3		60V	60V	3A	10mΩ
A-M08-04-FAMA-GTB3		60V	60V	3A	10mΩ
A-M08-05-FAMB-GTB3		30V	30V	3A	10mΩ

G

RoHS compliant

unit:mm

Scale	Free
TOLERANCE	
.X	±0.50
.XX	±0.20
DIM	TOL
X.°	±2.0°
.X°	±1.0°
Angle	TOL

Drawn	Date	Name
Approved	21.04.2022	Peter
Drawn	21.04.2022	Peter
Id.	modification	Date
		Name



Description: M8 Circular Connector Female/receptacle 90° Angle

ASSMANN WSW-NO. A-M08-xx-FAMx-GTB3

Drawing-No. ASS 9370 CO rev00

Customer-No. SHEET 2 / 2

H

1

2

3

4

5

6

7