

1

2

3

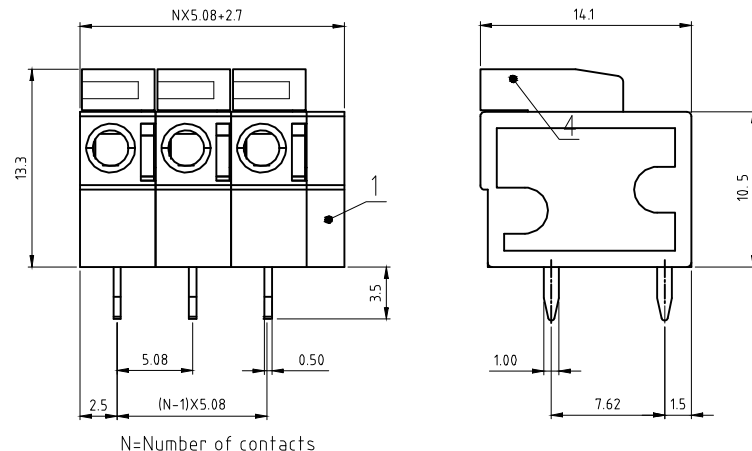
4

5

6

7

A



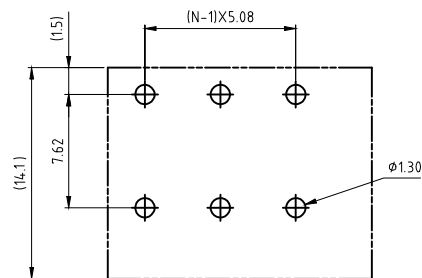
N=Number of contacts

B

C

D

E



P.C.B. LAYOUT

Material
 Terminal body (Contact pin): Brass
 Wire guard: Stainless steel
 Surface of solder tail: Tin plated
 Insulator (housing 1): PA66 (UL94V-0),Green
 Insulator (housing 4): PA66 (UL94V-0),Orange

Electrical
 Voltage rating: 300VAC/250VAC
 Current rating: 10A/10A
 Wire range: 0.2-1.5mm²
 Solid wire(AWG): 16-22
 Stranded wire(AWG): 16-22
 Pull force:
 Screw:
 Wire strip length: 10mm
 Withstanding Voltage: 1.6KV/2KV
 Operating temperature: -40°C to +105°C
 Wave Soldering temperature: 250°C±10°C/5 Sec

A

B

C

D

E

F

DIM	>3-6	>6-10	>10-30	>30-50	>50-80	>80-120	>120-180
TOL	±0.18	±0.22	±0.31	±0.37	±0.57	±0.80	±1.00

F

RoHS compliant
 Unit: mm

Scale	Free
TOLERANCE	
X.	±0.50
X.X	±0.40
X.XX	±0.20
DIM	TOL
X.°	±1°
Angle	TOL

①	Drawn	11.01.2023	Winnie
Id.	Modification	Date	Name

Date: 11.01.2023
 Name: Winnie
 Description: Terminal Block
 Pitch 5.08mm ,THT
 ASSMANN WSW-No.
 A-TB0508-xxCLG01-GN
 Drawing-No.
ASS 9708 CO
 rev00
 Customer-No.
 Sheet 1 / 1

A company of BCS

G

H

H

1

2

3

4

5

6

7