

1

2

3

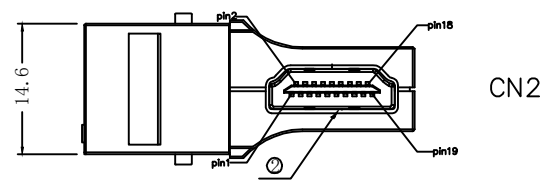
4

5

6

7

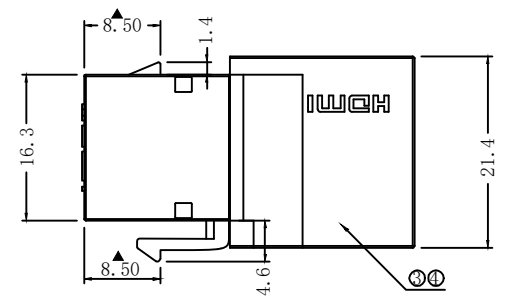
A



NOTE:
 1.Compliant with HDMI 1.4
 2.Packing method: 1 PC With 1 Zipper bag

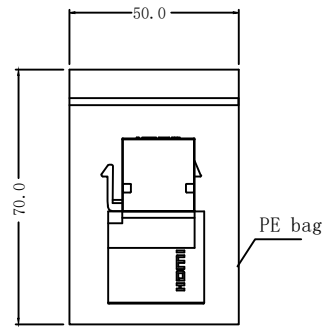
A

B



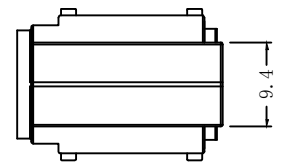
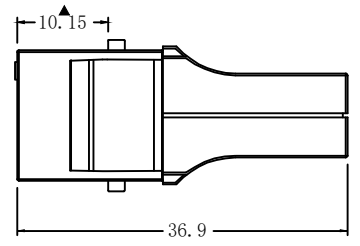
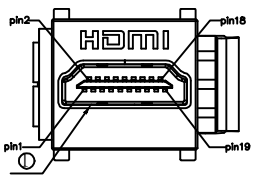
B

C



C

D



D

E

E

F

4	Cover	ABS cover Black	1	SET
3	PCB	PCB T=1.6mm	1	PCS
2	Connector	HDMI A type Female 19Pins gold plated	1	PCS
1	Connector	HDMI A type Female 19Pins gold plated	1	PCS
ITEM	NAME	DESCRIPTION	Q'TY	UNIT

F

G

RoHS compliant
 unit:mm

Scale	Free
TOLERANCE	
X.X	±0.50
X.XX	±0.30
X.XXX	±0.15
DIM	TOL
X°	±2°
Angle	TOL

			Date	Name	Description: Adapter HDMI AF/ HDMI AF
		Drawn	14.08.2024	Luca	
		Approved	14.08.2024	Luca	ASSMANN WSW-NO. A-AD-08F-08F-1G2
					Drawing-No. ASS 9864 CO rev00
					Customer-No. Sheet 1 / 1

G

H

H

1

2

3

4

5

6

7

