

1

2

3

4

5

6

7

A

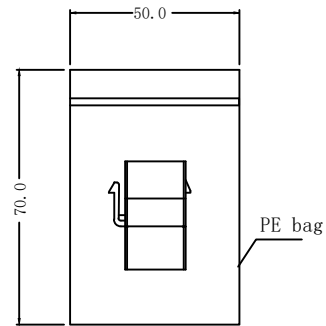
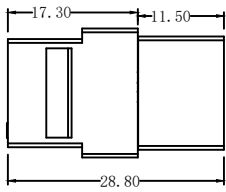
A

NOTE:

- 1.Compliant with HDMI 1.4
- 2.Packing method: 1 PC With 1 Zipper bag

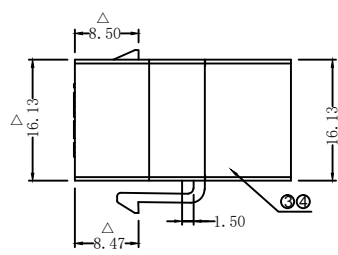
B

B



C

C

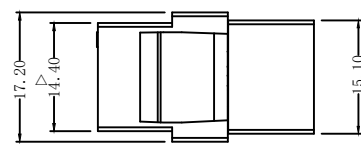
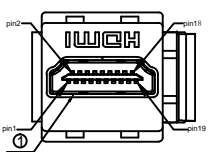


CN1

CN2

D

D



E

E

F

F

④	Cover	ABS cover White	1	SET
③	PCB	PCB T=1.6mm	1	PCS
②	Connector	HDMI A type Female 19Pins gold plated	1	PCS
①	Connector	HDMI A type Female 19Pins gold plated	1	PCS
ITEM	NAME	DESCRIPTION	Q'TY	UNIT

G

G

RoHS compliant
unit:mm

Scale	Free
TOLERANCE	
X.X	±0.50
X.XX	±0.30
X.XXX	±0.15
DIM	TOL
X°	±2°
Angle	TOL

					Date	Name	Description: Adapter HDMI AF/ HDMI AF
				Drawn	14.08.2024	Luca	
				Approved	14.08.2024	Luca	ASSMANN WSW-NO. A-AD-08F-08F-1A1
							Drawing-No. ASS 9872 CO rev00
							Customer-No. Sheet 1 / 1

H

H



1

2

3

4

5

6

7