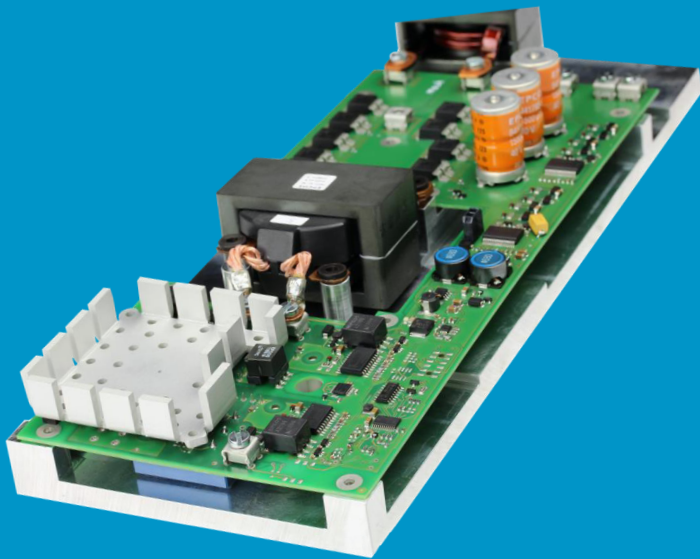


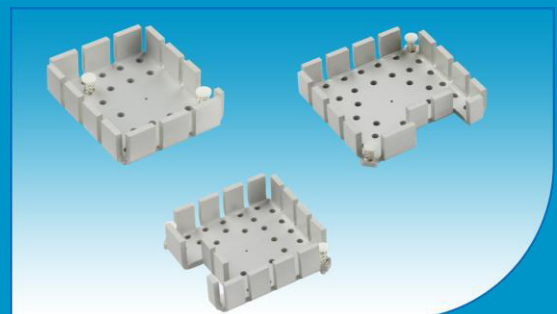
Thermal Management

ASSMANN WSW components



ASSMANN WSW components is well known as a worldwide system supplier for standard- and customer tailored connectors, cable harnesses, heat sinks and assemblies. ASSMANN WSW components has almost 50 years of experience within the electromechanical and heat sink market.

ASSMANN WSW extended their product portfolio of thermal management by introducing the stamped CPU heat sinks. The traditional “cross cut” and “pin fin” CPU heat sinks, which have been successfully established and improved over several years at ASSMANN WSW. This is a result of numerous designs, which have been implemented for specific customer requirements.



The newly developed stamped CPU heat sinks from ASSMANN WSW is a combination of “cross cut” and “finger-shaped” heat sinks.

Geometry:

Optimized heat sink structure in order to improve thermal management

Material:

Aluminum alloy in different material thicknesses

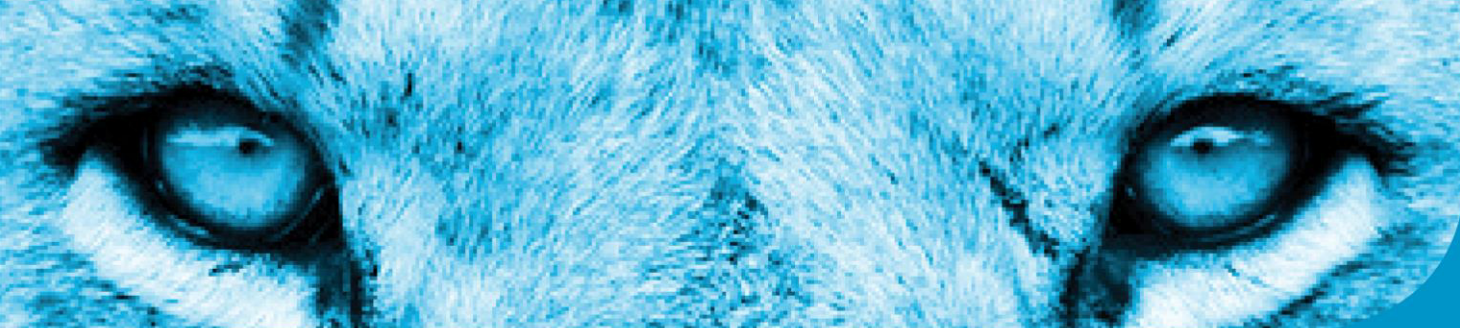
Mounting options:

- Push pin:** All stamped holes in the base plate can be used for this option
- Solder pin:** Pressed solder pins can be used to attach onto the PCB
- Thermal tape:** Acc. to the application, tapes can be shipped separately
- Adhesive:** Direct bonding of the heat sink onto the component

Modification

By modification of the tool, customized notches can be established. This offers further possibilities: The heat sink can be mounted next to other electronic components, without stressing each other due to space problems and without compromising the overall size of the heat sink. ASSMANN WSW do offer product innovations based on custom tailored specification. Please just let us know your requirements.

For more information please visit our website:
www.assmann-wsw.com/wo/en/products/thermal-management/cpu-heatsinks

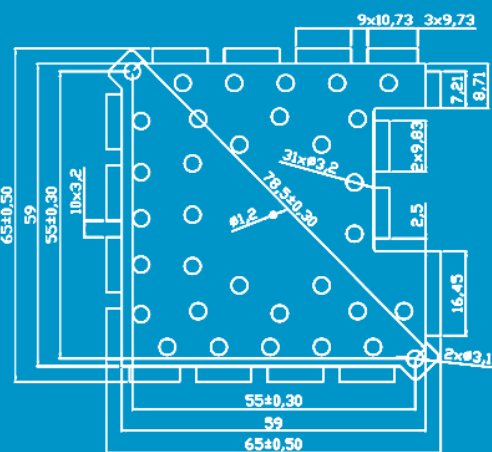
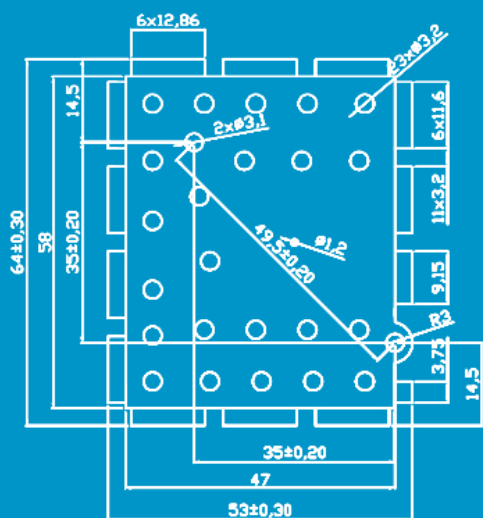


Thermal Management

ASSMANN

WSW components

Technical data



Product specification

Product group	CPU heat sinks
Style	Stamped version
Material	AL 1050
Surface	<ul style="list-style-type: none"> • nature anodized • black anodized
Mounting	<ul style="list-style-type: none"> • push pin • solder pin • thermal tape
Specials	Customer-tailored
Thermal resistance	Acc. customer requirements
Packing	Acc. customer requirements
Surface dimension	Modifications of all dimensions and special perforations are possible
Color	Customer-tailored
RoHS / REACH compliance	YES

ASSMANN WSW components GmbH
 Auf dem Schueffel 1
 D-58513 Luedenscheid, Germany
 Tel.: +49 (23 51) 5 54-0
 Fax.: +49 (23 51) 5 54-8 61

ASSMANN WSW components k.s.
 Zahradnicka 1135
 SK 958 03 Partizanske, Slovakia
 Tel.: +421 (3874) 7141 - 0
 Fax.: +421 (3874) 7141 - 6

ASSMANN WSW components Inc.
 1840 W. Drake Drive, Suite 101
 Tempe, AZ. 85283, USA
 Tel.: +1 (480) 8977 - 001
 Fax.: +1 (480) 8977 - 255

ASSMANN WSW components Ltd.
 Room 2C, 2F, Jin Lian Xuan, Lotus Plaza,
 No.126 De Zheng Zhong RD, Changan Town,
 Dongguan City, Guangdong 523847, China
 Tel.: +86 (769) 81628280
 Fax.: +86 (769) 85426 - 200