
Product Change Notification(PCN)

Issue Date: 06.09.2012
Modification / Revision Date: 15.08.2012

D-Sub straight for PCB mounting 9-37 ways (2010 catalogue page 9)

Change Notification # : PCN 20120906-A-DF XX PP/Z

Description of changes:

1. Amendment of the specification
2. Operating temperature : New : -20°C to +85°C
3. Catalogue 2010 shows different specification
4. Draw.-No. ASS 4885 C0rev00 substitutes ASS 3257 C0rev01
Draw.-No. ASS 4885 C0rev00 substitutes ASS 3231 C0rev01

Date of change and Implementation: Change: June 2010 / Implementation: 15.08.2012

Key Characteristics of Change: Operating temperature - some tiny dimensions and tolerances

Products Affected: A-DF xx PP/Z
A-DS xx PP/Z

Reason for Change: Change of manufacturing location

Response : No response to this notification is required.

ASSMANN WSW components GmbH
Auf dem Schüffel 1
D-58513 Lüdenscheid
Tel.: +49-2351 - 554-0
Fax: +49-2351 - 554-99226

Product Change Notification(PCN)

Issue date: [06.09.2012](#)
Modification / Revision date: [15.08.2012](#)

Reference Documents / Attachments:

Document: Drawing

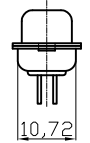
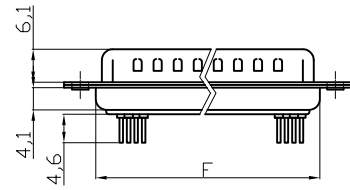
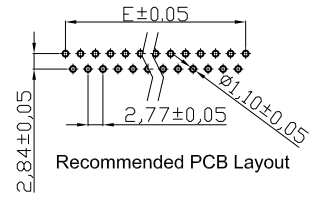
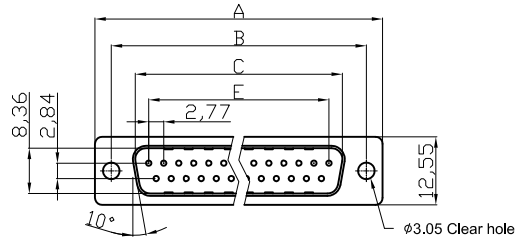
ASSMANN WSW P/N	Drawing Number
A-DF xx PP/Z	ASS 4885 C0rev00
A-DS xx PP/Z	ASS 4885 C0rev00

As attached

PCN Revision History:

Date of Revision: Revision Number: 00

Male



NOTES:

MATERIAL

- 1. Insulator Material: Glass-filled thermoplastic PBT, UL94V-0
- 2. Contact Material: Brass or Phosphor Bronze
- 3. Shell :Steel, 100 µ" Tin Over 50µ" min Copper
- 4. Clinch Nut :Brass, Nickel Plated
- 5. Boardlock :Brass, Tin Plated
- 6. Screwlock :Brass, Nickel Plated

ELECTRICAL

- 1. Current Rating : 3AMP
- 2. Voltage Rating : 250V AC/rms 60Hz
- 3. Contact Resistance: 20mΩ
- 4. Insulation Resistance: 1000MΩ min at 500 VDC
- 5. Withstand Voltage: 1000V AC/rms 60Hz for 1 minute

ENVIRONMENTAL

- 1. Temperature Range: -20°C~+85°C

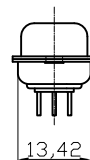
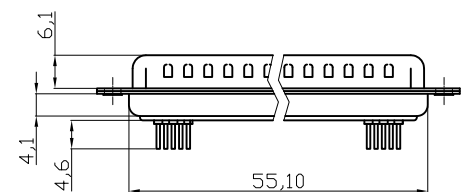
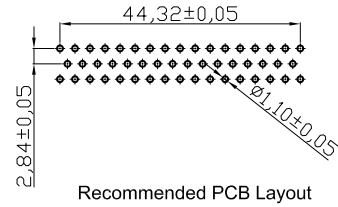
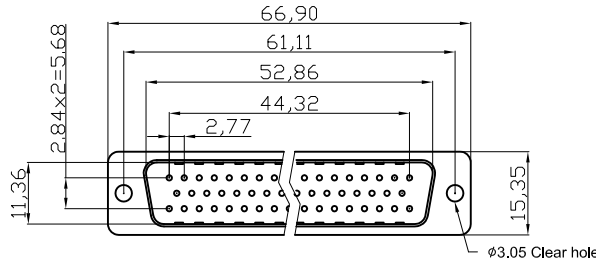
Order Code:

A-Dx xx PP/Z

Contact style:
 F - Female
 S - Male

No. of Contacts
 09 / 15 / 25 / 37

Standard: Quality class III



50 Positions

Dimensions

Positions	A	B	C	E	F
09	30.81	24.99	16.92	11.08	19.20
15	39.20	33.30	25.25	19.39	27.70
25	53.04	47.04	38.96	33.24	41.10
37	69.40	63.50	55.42	49.86	57.30

RoHS compliant

Unit:mm

Scale	Free				Date	Name	Customer-No.
TOLERANCE				Drawn	15.08.2012	Lucas	ASSMANN WSW-No. A-DX XX PP/Z
X.	±0.38			Approved	15.08.2012	Winnie	
X.X	±0.25						
X.XX	±0.13						
DIM	TOL						
X.°	±3°						Drawing-No. ASS 4885 CO
X.X°	±1.0°	Ⓢ	Drawn	15.08.2012	Lucas	rev00	
Angle	TOL	Id.	Modification	Date	Name	Replace	Sheet 1/2



1

2

3

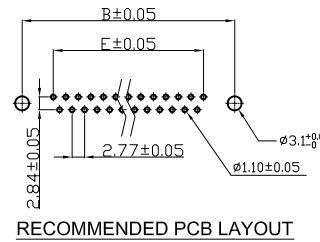
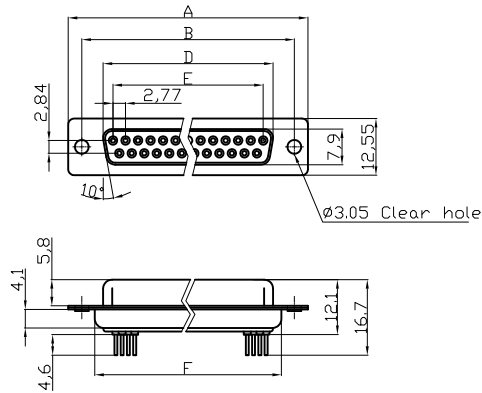
4

5

6

7

Female



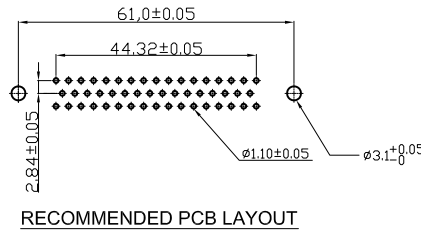
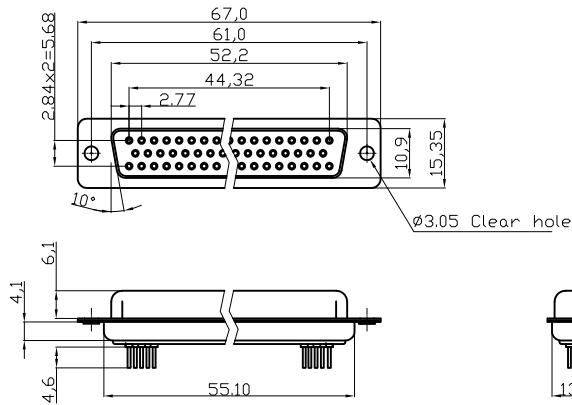
NOTES:

MATERIAL

- 1. Insulator Material: Glass-filled thermoplastic PBT, UL94V-0, Gray
- 2. Contact Material: Copper alloy
- 3. Shell :Steel, 100 μ" Tin Over 50μ" min Copper
- 4. Contact plating : Gold flash full gold

ELECTRICAL

- 1. Current Rating : 3AMP
- 2. Voltage Rating : 250V AC/rms 60Hz
- 3. Contact Resistance: 20mΩ Max at 1 AMP DC
- 4. Insulation Resistance: 1000MΩ at 500 VDC
- 5. Withstand Voltage: 1000V AC/rms 60Hz for 1 minute
- 6. OPERATING TEMPERATURE: -20°C+85°C



Dimensions

Positions	A±0.15	B±0.10	D±0.13	E±0.08	F±0.10
09	30.81	24.99	16.33	11.08	19.20
15	39.20	33.30	24.70	19.39	27.70
25	53.05	47.04	38.40	33.24	41.10
37	69.40	63.50	54.80	49.86	57.30

50 POSITIONS

RoHS compliant

Unit: mm

Scale	Free						Date	Name	Customer-No.
TOLERANCE							Drawn	15.08.2012	Lucas
X.	±0.38						Approved	15.08.2012	Winnie
X.X	±0.25								
X.XX	±0.13								
DIM	TOL								Drawing-No.
X.°	±3°								ASSMANN WSW-No. A-DX XX PP/Z
X.X°	±1.0°	Ⓢ	Drawn	15.08.2012	Lucas			ASS 4885 CO	
Angle	TOL	Id.	Modification	Date	Name			Replace	Sheet 2/2

ASS 4885 CO

rev00

