

## Product Change Notification(PCN)

Issue Date: 07.06.2017  
Modification / Revision Date: 07.06.2017

### AWH\_xx\_G-x-2-x-2-IDC DIN 41651, ejector header, 2.54mm, IDC, 180°, tray

**Change Notification:** PCN 20170602\_AWH\_xx\_G-x-2-x-2-IDC

**Description of changes:**

- 01. Modification of insulator body
- 02. Change of dimension
- 03. Draw.-No. ASS\_0532\_COrev08 substitutes ASS\_0532\_COrev07
- 04. Draw.-No. ASS\_2231\_COrev08 substitutes ASS\_2231\_COrev07

**Date of change and Implementation:** Change: Week 24 / 2017 [ Datecode of production ]  
Implementation: 07.06.2017

**Key Characteristics of Change:** Modification & Dimension, see page 3

**Products Affected:** AWH xxG-02x2-IDC  
AWH xxG-E2x2-IDC

**Reason for Change:** In order to avoid that the tube cover will unfortunately press IDC article parts into each other during transport, the article body gets modification of insulator body design.

**Response :** No response to this notification is required.

#### PCN Revision History:

Date of Revision: 07.06.2017

Revision Number: 00

page 1/

Auf dem Schüffel 1  
 D-58513 Lüdenscheid  
 Tel.: +49-2351 - 554-0  
 Fax +49 (2351) 554-861  
 info@assmann-wsw.com  
 www.assmann-wsw.com

## Product Change Notification(PCN)

Issue Date: 07.06.2017  
 Modification / Revision Date: 07.06.2017

**Reference Documents / Attachments:**

Document: Drawing

| ASSMANN WSW P/N  | Drawing Number   |
|------------------|------------------|
| AWH xxG-02x2-IDC | ASS_2231_COrev08 |
| AWH xxG-E2x2-IDC | ASS_0532_COrev08 |
|                  |                  |
|                  |                  |
|                  |                  |
|                  |                  |
|                  |                  |
|                  |                  |
|                  |                  |
|                  |                  |
|                  |                  |
|                  |                  |
|                  |                  |
|                  |                  |
|                  |                  |
|                  |                  |
|                  |                  |
|                  |                  |
|                  |                  |
|                  |                  |
|                  |                  |
|                  |                  |
|                  |                  |

**PCN Revision History:**

Date of Revision: 07.06.2017

Revision Number: 00

Auf dem Schüffel 1  
 D-58513 Lüdenscheid  
 Tel.: +49-2351 - 554-0  
 Fax +49 (2351) 554-861  
 info@assmann-wsw.com  
 www.assmann-wsw.com

## Product Change Notification(PCN)

Issue Date: 07.06.2017  
 Modification / Revision Date: 07.06.2017

| Old version   | New version                     |
|---|---------------------------------|
| <p>WSW P/N:AWH xxG-02x2-IDC</p>                                     | <p>WSW P/N:AWH xxG-02x2-IDC</p> |
| <p>WSW P/N:AWH xxG-E2x2-IDC</p>                                     | <p>WSW P/N:AWH xxG-E2x2-IDC</p> |
|   |                                 |
| <p>For detail, please take attached new drawings for reference.</p> |                                 |

### PCN Revision History:

Date of Revision: 07.06.2017

Revision Number: 00

page 3/

1

2

3

4

5

6

7

A

A

B

B

C

C

D

D

E

E

F

F

NOTES:

MATERIAL

- 1. Insulator Material: PBT+30%G.F.(UL94V-0), Grey
- 2. Contact Material : Brass
- 3. Contact Plating : 1u" Au selective Over Ni

ELECTRICAL

- 1. Current Rating : 3.0 AMP
- 2. Withstand Voltage : 1000V AC/minute
- 3. Contact Resistance : 20mΩ max
- 4. Insulation Resistance: 1000MΩ min

ENVIRONMENTAL

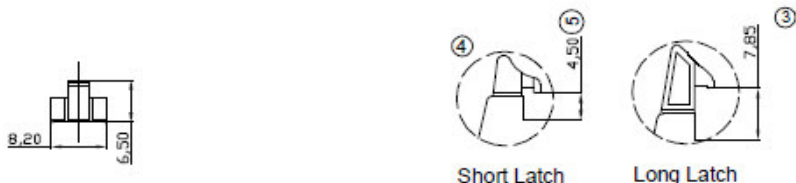
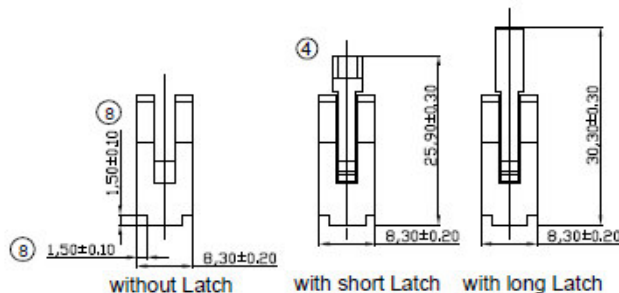
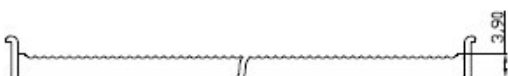
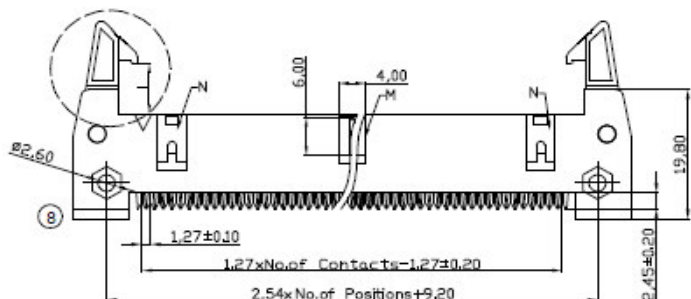
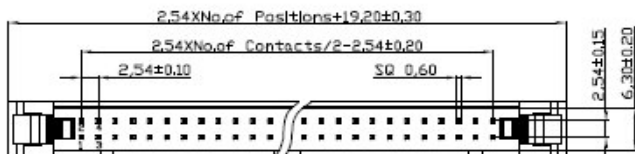
- 1. Operation Temperature: -40°C to +105°C
- 2. Packing : Tube
- 3. 10P~18P with slot "M" without slot "N"
- 20P~64P with slot "M" and "N"

Ordering Information

AWH xxG-02x2-IDC

No. of Contacts:  
10, 14, 16, 20, 26,  
30, 34, 40, 50, 60, 64

Latch Type  
0 -without latch  
2 -with short latches  
3 -with long latches



RoHS compliant

Unit: mm



File No.: E198287

| DIM | TOL | Id. | Modification                       | Date       | Name   |
|-----|-----|-----|------------------------------------|------------|--------|
|     |     | ⑧   | Modify the shape of insulator      | 05.08.2017 | Winnie |
|     |     | ⑦   | Change the packing tray into tube  | 21.09.2015 | Winnie |
|     |     | ⑥   | Add UL file no.                    | 12.12.2013 | Winnie |
|     |     | ⑤   | Update                             | 29.03.2013 | Amy    |
|     |     | ④   | Correct drawing of short latch     | 05.05.2010 | Dean   |
|     |     | ③   | Modify dimension from 7.85 to 7.85 | 03.11.2008 | Dean   |



|                 |                   |
|-----------------|-------------------|
| Customer-No.    |                   |
| ASSMANN WSW-No. | AWH xxG-02x2-IDC  |
| Drawing-No.     | ASS 2231 CO rev08 |
| Replace         | Sheet             |

1

2

3

4

5

6

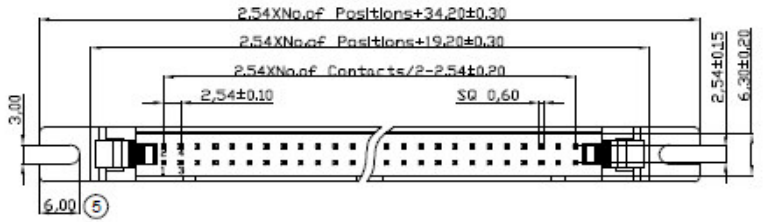
7

H

H

1 2 3 4 5 6 7

A



B

**NOTES:**

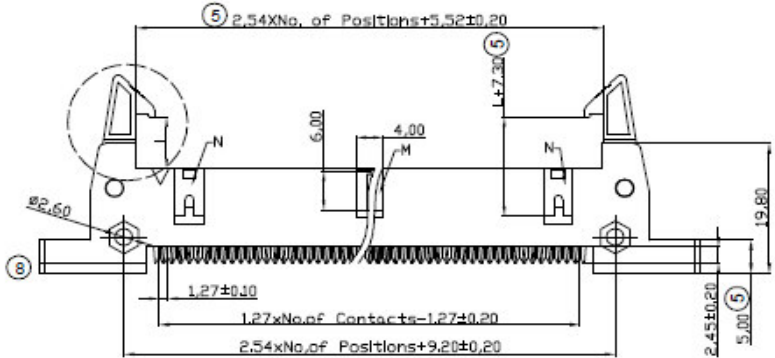
- MATERIAL**  
 1. Insulator Material: PBT+30%G.F.(UL94V-0), Grey  
 2. Contact Material : Brass  
 3. Contact Plating : 1u" Au selective Over Ni
- ELECTRICAL**  
 1. Current Rating : 3.0 AMP  
 2. Withstand Voltage : 1000V AC/minute  
 3. Contact Resistance : 20mΩ max  
 4. Insulation Resistance : 1000MΩ min
- ENVIRONMENTAL**  
 1. Operation Temperature: -40°C to +105°C  
 2. Packing : Tube  
 3. 10P~18P with slot "M" without slot "N"  
 20P~64P with slot "M" and "N"

Ordering Information  
**AWH xxG-E2x2-IDC**

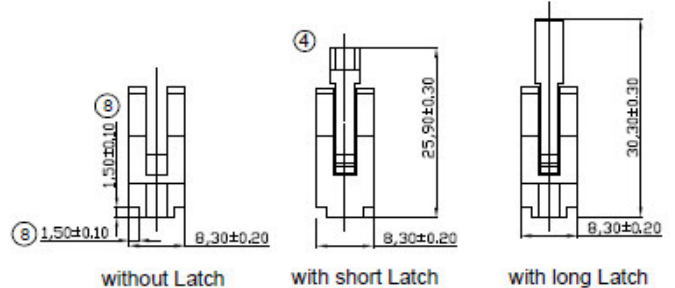
No. of Contacts:  
 10, 14, 16, 20, 26,  
 30, 34, 40, 50, 60, 64

Latch Type:  
 0 -without latch  
 2 -with short latches  
 3 -with long latches

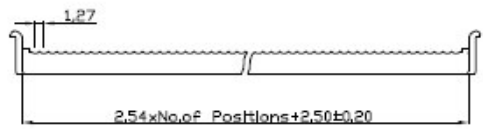
C



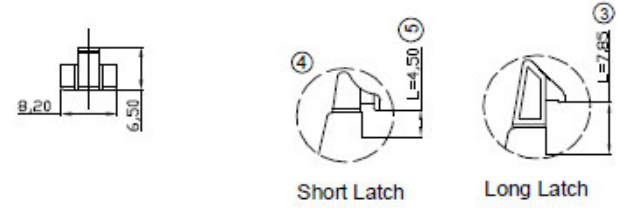
D



E



F



G

**RoHS compliant**  
 Unit: mm



| DIM       | TOL   | Id. | Modification                       | Date       | Name   |
|-----------|-------|-----|------------------------------------|------------|--------|
| Scale     | Free  | 8   | Modify the shape of insulator      | 05.06.2017 | Winnie |
| TOLERANCE |       | 7   | Change the packing tray into tube  | 21.09.2015 | Winnie |
| XX        | ±0.40 | 6   | Add UL file no.                    | 12.12.2013 | Amy    |
| XX        | ±0.25 | 5   | Update                             | 03.04.2013 | Winnie |
| X,XXX     | ±0.15 | 4   | Correct drawing of short latch     | 05.05.2010 | Dean   |
| ANGLE     | ±3°   | 3   | Modify dimension from 7.65 to 7.85 | 03.11.2009 | Dean   |



|                 |         |                  |
|-----------------|---------|------------------|
| Date            | Name    | Customer-No.     |
| 29.05.2008      | Hellwig |                  |
| 05.06.2017      | Winnie  |                  |
| ASSMANN WSW-No. |         | AWH xxG-E2x2-IDC |
| Drawing-No.     |         |                  |
| ASS 0532 CO     |         | rev08            |
| Replace         | Sheet   |                  |

H

1 2 3 4 5 6 7

---

## Product Change Notification(PCN)

---

Issue Date: 14.10.2015  
Modification / Revision Date: 14.10.2015

### IDC-Header (catalogue page 66)

Change Notification # : PCN 20151014-AWH\_xx\_G-x-2-x-2-IDC

Description of changes:   
1. New packaging  
2. Draw.-No. ASS\_2331\_COrev07 substitutes ASS\_2331\_COrev06  
3. Draw.-No. ASS\_0532\_COrev07 substitutes ASS\_0532\_COrev06

Date of change and Implementation: Change: Week 42 / 2015 [ Datecode of production ]  
Implementation: 14.10.2015

Key Characteristics of Change: New tube packaging for components

Products Affected:

|                  |                  |                  |
|------------------|------------------|------------------|
| AWH 10G-0202-IDC | AWH 10G-0222-IDC | AWH 10G-0232-IDC |
| AWH 14G-0202-IDC | AWH 14G-0222-IDC | AWH 14G-0232-IDC |
| AWH 16G-0202-IDC | AWH 16G-0222-IDC | AWH 16G-0232-IDC |
| AWH 20G-0202-IDC | AWH 20G-0222-IDC | AWH 20G-0232-IDC |
| AWH 26G-0202-IDC | AWH 26G-0222-IDC | AWH 26G-0232-IDC |
| AWH 34G-0202-IDC | AWH 34G-0222-IDC | AWH 34G-0232-IDC |
| AWH 40G-0202-IDC | AWH 40G-0222-IDC | AWH 40G-0232-IDC |
| AWH 50G-0202-IDC | AWH 50G-0222-IDC | AWH 50G-0232-IDC |

|                  |                  |                  |
|------------------|------------------|------------------|
| AWH 10G-E202-IDC | AWH 10G-E222-IDC | AWH 10G-E232-IDC |
| AWH 14G-E202-IDC | AWH 14G-E222-IDC | AWH 14G-E232-IDC |
| AWH 16G-E202-IDC | AWH 16G-E222-IDC | AWH 16G-E232-IDC |
| AWH 20G-E202-IDC | AWH 20G-E222-IDC | AWH 20G-E232-IDC |
| AWH 26G-E202-IDC | AWH 26G-E222-IDC | AWH 26G-E232-IDC |
| AWH 34G-E202-IDC | AWH 34G-E222-IDC | AWH 34G-E232-IDC |
| AWH 40G-E202-IDC | AWH 40G-E222-IDC | AWH 40G-E232-IDC |
| AWH 50G-E202-IDC | AWH 50G-E222-IDC | AWH 50G-E232-IDC |

Reason for Change: Production changed tray packaging to improved tube packaging

Response : No response to this notification is required.

ASSMANN WSW components GmbH  
 Auf dem Schüffel 1  
 D-58513 Lüdenscheid  
 Tel.: +49-2351 - 554-0  
 Fax: +49-2351 - 554-99225

**Product Change Notification(PCN)**

**Issue date:** 14.10.2015

**Modification / Revision date:** 14.10.2015

**Reference Documents / Attachments:**

Document: Drawing

| ASSMANN WSW P/N  | Drawing Number   |
|------------------|------------------|
| AWH xxG-0202-IDC | ASS_2331_COrev07 |
| AWH xxG-0222-IDC |                  |
| AWH xxG-0232-IDC |                  |
|                  |                  |
| AWH xxG-E202-IDC | ASS_0532_COrev07 |
| AWH xxG-E222-IDC |                  |
| AWH xxG-E232-IDC |                  |
|                  |                  |
|                  |                  |
|                  |                  |
|                  |                  |
|                  |                  |
|                  |                  |
|                  |                  |
|                  |                  |
|                  |                  |
|                  |                  |
|                  |                  |
|                  |                  |
|                  |                  |

As attached

**PCN Revision History:**

Date of Revision: 14.10.2015

Revision Number: 00

## Product Change Notification(PCN)

Issue date: 14.10.2015

Modification / Revision date: 14.10.2015

| Component        | Old version         |                 | New version         |                 |
|------------------|---------------------|-----------------|---------------------|-----------------|
|                  | Packaging Unit tray | Carton Box Unit | Packaging Unit tube | Carton Box Unit |
| AWH 10G-0202-IDC | 180                 | 2160            | 18                  | 2160            |
| AWH 14G-0202-IDC | 144                 | 1728            | 15                  | 1800            |
| AWH 16G-0202-IDC | 144                 | 1728            | 14                  | 1680            |
| AWH 20G-0202-IDC | 126                 | 1512            | 12                  | 1440            |
| AWH 26G-0202-IDC | 108                 | 1296            | 11                  | 1320            |
| AWH 34G-0202-IDC | 90                  | 1080            | 9                   | 1080            |
| AWH 40G-0202-IDC | 72                  | 864             | 8                   | 960             |
| AWH 50G-0202-IDC | 54                  | 648             | 6                   | 720             |
| AWH 10G-0222-IDC | 156                 | 3120            | 18                  | 1296            |
| AWH 14G-0222-IDC | 132                 | 2640            | 15                  | 1080            |
| AWH 16G-0222-IDC | 120                 | 2400            | 14                  | 1008            |
| AWH 20G-0222-IDC | 108                 | 2160            | 12                  | 864             |
| AWH 26G-0222-IDC | 84                  | 1680            | 11                  | 792             |
| AWH 34G-0222-IDC | 72                  | 1440            | 9                   | 648             |
| AWH 40G-0222-IDC | 60                  | 1200            | 8                   | 576             |
| AWH 50G-0222-IDC | 60                  | 720             | 6                   | 432             |
| AWH 10G-0232-IDC | 156                 | 3120            | 18                  | 1296            |
| AWH 14G-0232-IDC | 132                 | 2640            | 15                  | 1080            |
| AWH 16G-0232-IDC | 120                 | 2400            | 14                  | 1008            |
| AWH 20G-0232-IDC | 108                 | 2160            | 12                  | 864             |
| AWH 26G-0232-IDC | 84                  | 1680            | 11                  | 792             |
| AWH 34G-0232-IDC | 72                  | 1440            | 9                   | 648             |
| AWH 40G-0232-IDC | 60                  | 1200            | 8                   | 576             |
| AWH 50G-0232-IDC | 60                  | 1200            | 6                   | 432             |
| AWH 10G-E202-IDC | 126                 | 1512            | 12                  | 1440            |
| AWH 14G-E202-IDC | 108                 | 1296            | 11                  | 1320            |
| AWH 16G-E202-IDC | 108                 | 1296            | 10                  | 1200            |
| AWH 20G-E202-IDC | 90                  | 1080            | 9                   | 1080            |
| AWH 26G-E202-IDC | 90                  | 1080            | 8                   | 960             |
| AWH 34G-E202-IDC | 72                  | 864             | 7                   | 840             |
| AWH 40G-E202-IDC | 72                  | 864             | 6                   | 720             |
| AWH 50G-E202-IDC | 54                  | 648             | 5                   | 600             |
| AWH 10G-E222-IDC | 96                  | 1920            | 12                  | 864             |
| AWH 14G-E222-IDC | 84                  | 1680            | 11                  | 792             |
| AWH 16G-E222-IDC | 84                  | 1680            | 10                  | 720             |
| AWH 20G-E222-IDC | 72                  | 1440            | 9                   | 648             |
| AWH 26G-E222-IDC | 72                  | 1440            | 8                   | 576             |
| AWH 34G-E222-IDC | 60                  | 1200            | 7                   | 504             |
| AWH 40G-E222-IDC | 48                  | 960             | 6                   | 432             |
| AWH 50G-E222-IDC | 48                  | 960             | 5                   | 360             |
| AWH 10G-E232-IDC | 96                  | 1920            | 12                  | 864             |
| AWH 14G-E232-IDC | 84                  | 1680            | 11                  | 792             |
| AWH 16G-E232-IDC | 84                  | 1680            | 10                  | 720             |
| AWH 20G-E232-IDC | 72                  | 1440            | 9                   | 648             |
| AWH 26G-E232-IDC | 72                  | 1440            | 8                   | 576             |
| AWH 34G-E232-IDC | 60                  | 1200            | 7                   | 504             |
| AWH 40G-E232-IDC | 48                  | 960             | 6                   | 432             |
| AWH 50G-E232-IDC | 48                  | 960             | 5                   | 360             |

As attached

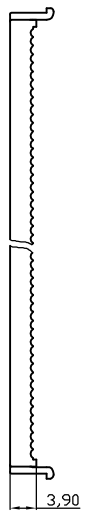
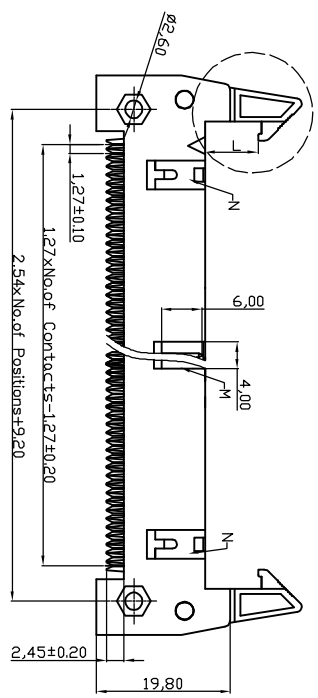
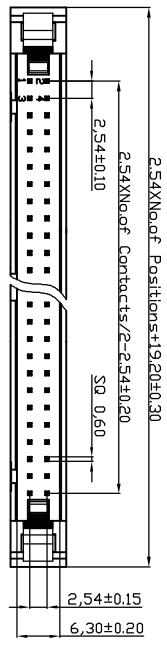
### PCN Revision History:

Date of Revision: 14.10.2015

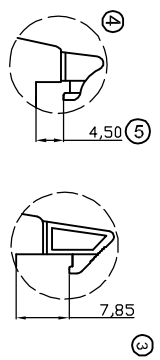
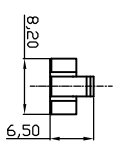
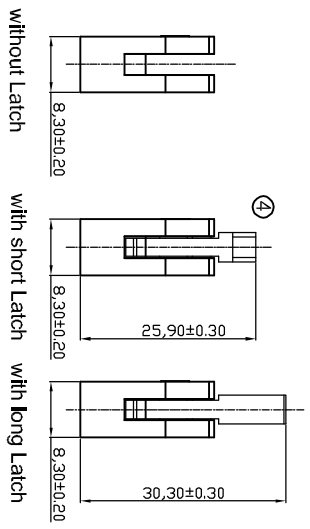
Revision Number: 00



|   |   |   |   |   |   |   |
|---|---|---|---|---|---|---|
| 1 | 2 | 3 | 4 | 5 | 6 | 7 |
|---|---|---|---|---|---|---|



- NOTES:**
- MATERIAL**
1. Insulator Material: PBT+30%G.F. (UL94V-0), Grey
  2. Contact Material: Brass
  3. Contact Plating: 1u" Au selective Over Ni ELECTRICAL
  1. Current Rating: 3.0 AMP
  2. Withstand Voltage: 1000V AC/minute
  3. Contact Resistance: 20mΩ max
  4. Insulation Resistance: 1000MΩ min ENVIRONMENTAL
1. Operation Temperature: -40°C to +105°C
- ⑦ 2. Packing: Tube
3. 10P~18P with slot "M" without slot "N"
- 20P~64P with slot "M" and "N"



Ordering Information  
**AWH XXG-02X2-IDC**

No. of Contacts: -  
 10, 14, 16, 20, 26,  
 30, 34, 40, 50, 60, 64

Latch Type  
 0 - without latch  
 2 - with short latches  
 3 - with long latches

**RoHS compliant**  
 Unit: mm



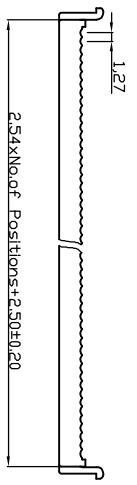
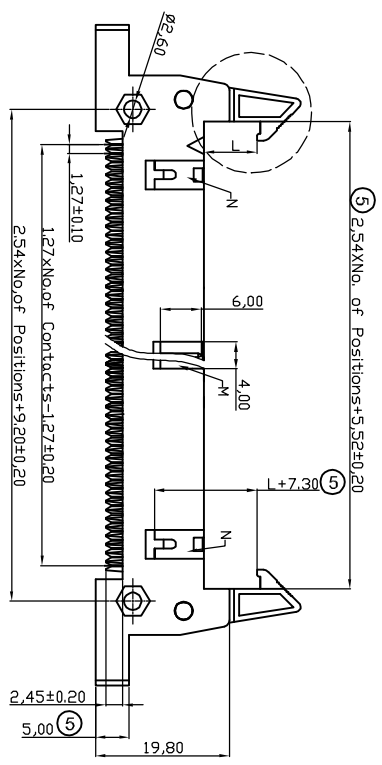
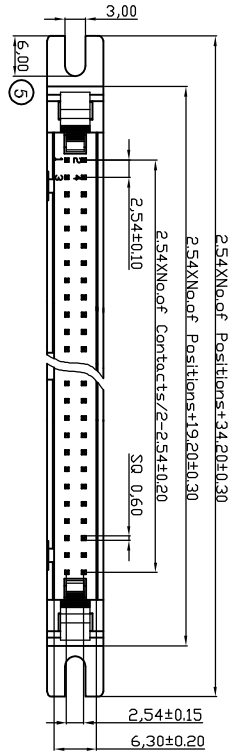
| Scale            | Free       | ⑦   | Change the packing tray into tube  | 21.09.2015 | Winnie |          | Date       | Name  | Customer-No.     |
|------------------|------------|-----|------------------------------------|------------|--------|----------|------------|-------|------------------|
| <b>TOLERANCE</b> |            | ⑥   | Add UL file no.                    | 12.12.2013 | Winle  | Drawn    | 25.01.2006 | Alex  | ASSMANN WSW-No.  |
| X.X              | ±0.40      | ⑤   | Update                             | 29.03.2013 | Amy    | Approved | 21.09.2015 | Winle | AWH XXG-02X2-IDC |
| X.XX             | ±0.25      | ④   | Correct drawing of short latch     | 05.05.2010 | Dean   |          |            |       |                  |
| X.XXX            | ±0.15      | ③   | Modify dimension from 7.65 to 7.85 | 03.11.2009 | Dean   |          |            |       |                  |
| <b>ANGLE</b>     | ±3°        | ②   | Update                             | 29.06.2009 | Dean   |          |            |       |                  |
| <b>DIM</b>       | <b>TOL</b> | Id. | Modification                       | Date       | Name   | <br>     |            |       |                  |
|                  |            |     |                                    |            |        |          |            |       |                  |

Drawing-No.  
**ASS 2231 CO**

Replace  
 rev07

|   |   |   |   |   |   |   |
|---|---|---|---|---|---|---|
| 1 | 2 | 3 | 4 | 5 | 6 | 7 |
|---|---|---|---|---|---|---|

|   |   |   |   |   |   |   |
|---|---|---|---|---|---|---|
| 1 | 2 | 3 | 4 | 5 | 6 | 7 |
|---|---|---|---|---|---|---|



**NOTES:**

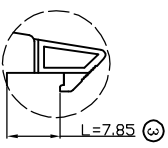
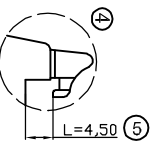
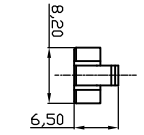
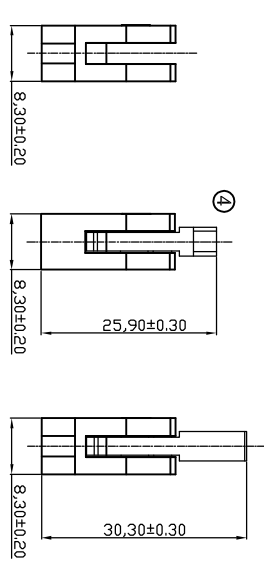
**MATERIAL**

1. Insulator Material: PBT+30%G.F. (UL 94V-0), Grey
2. Contact Material: Brass
3. Contact Plating : 1" Au selective Over Ni ELECTRICAL
1. Current Rating : 3.0 AMP
2. Withstand Voltage : 1000V AC/minute
3. Contact Resistance : 20mΩ max
4. Insulation Resistance: 1000MΩ min ENVIRONMENTAL
1. Operation Temperature: -40°C to +105°C
2. Packing : Tube
3. 10P~18P with slot "M" without slot "N"
- 20P-64P with slot "M" and "N"

**Ordering Information**

**AWH XXG-E2x2-IDC**

- No. of Contacts : -  
 0-without latch  
 1-with short latches  
 2-with short latches  
 3-with long latches



Short Latch

Long Latch

|  |           |       |     |   |            |        |                                       |            |              |
|--|-----------|-------|-----|---|------------|--------|---------------------------------------|------------|--------------|
| G  | Scale     | Free  | ⑦   | Change the packing tray into tube           | 21.09.2015 | Winnie |                                       |            | Customer-No. |
|  | TOLERANCE |       | ⑥   | Add UL file no.                             | 12.12.2013 | Amy    | Drawn                                 | 29.05.2006 | Hellwig      |
| G  | X.X       | ±0.40 | ⑥   |   |            |        |                                       |            |              |
|  | X.XX      | ±0.25 | ⑤   | Update                                      | 03.04.2013 | Winnie | Approved                              | 21.09.2015 | Winnie       |
| G  | X.XXX     | ±0.15 | ④   | Correct drawing of short latch              | 05.05.2010 | Dean   |                                       |            |              |
|  | ANGLE     | ±3°   | ③   | Modify dimension from 7.65 to 7.85          | 03.11.2009 | Dean   |                                       |            |              |
| H  |           |       | ②   | Increase right view Modification dimensions | 16.02.2009 | Dean   |                                       |            |              |
|  | DIM       | TOL   | Id. | Modification                                | Date       | Name   | <br><b>ASSMANN</b><br>WSW/ components |            | Drawing-No.  |
| 1  | 2         | 3     | 4   | 5   | 6          | 7      |                                       |            | ASS 0532 CO  |
| <p><b>ROHS compliant</b></p> <p>Unit: mm</p> <p> File No.: E198287</p> |           |       |     |   |            |        |                                       |            |              |