

Product Change Notification (PCN)

Issue Date: 16.09.2020
Modification / Revision Date: 16.09.2020

A-BFxxxxx-x
DIN41612

Change Notification : PCN20200916_A-BFxxxxx-x

Description of changes :
1. Change of production location
2. New Draw.-No.ASS_5674_COrev01

Reason for Change : Change of production location

Key Characteristics of Change : Details see page 3

Products Affected :
A-BFxxxxx-x
Type B, female, straight

Date of change and Implementation :
Change : Week 38 / Year 2020
Implementation: 16.09.2020

Response : No response to this notification is required.

PCN Revision History :

Date of Revision : 16.09.2020

Revision Number: 00

page 1/

Product Change Notification(PCN)

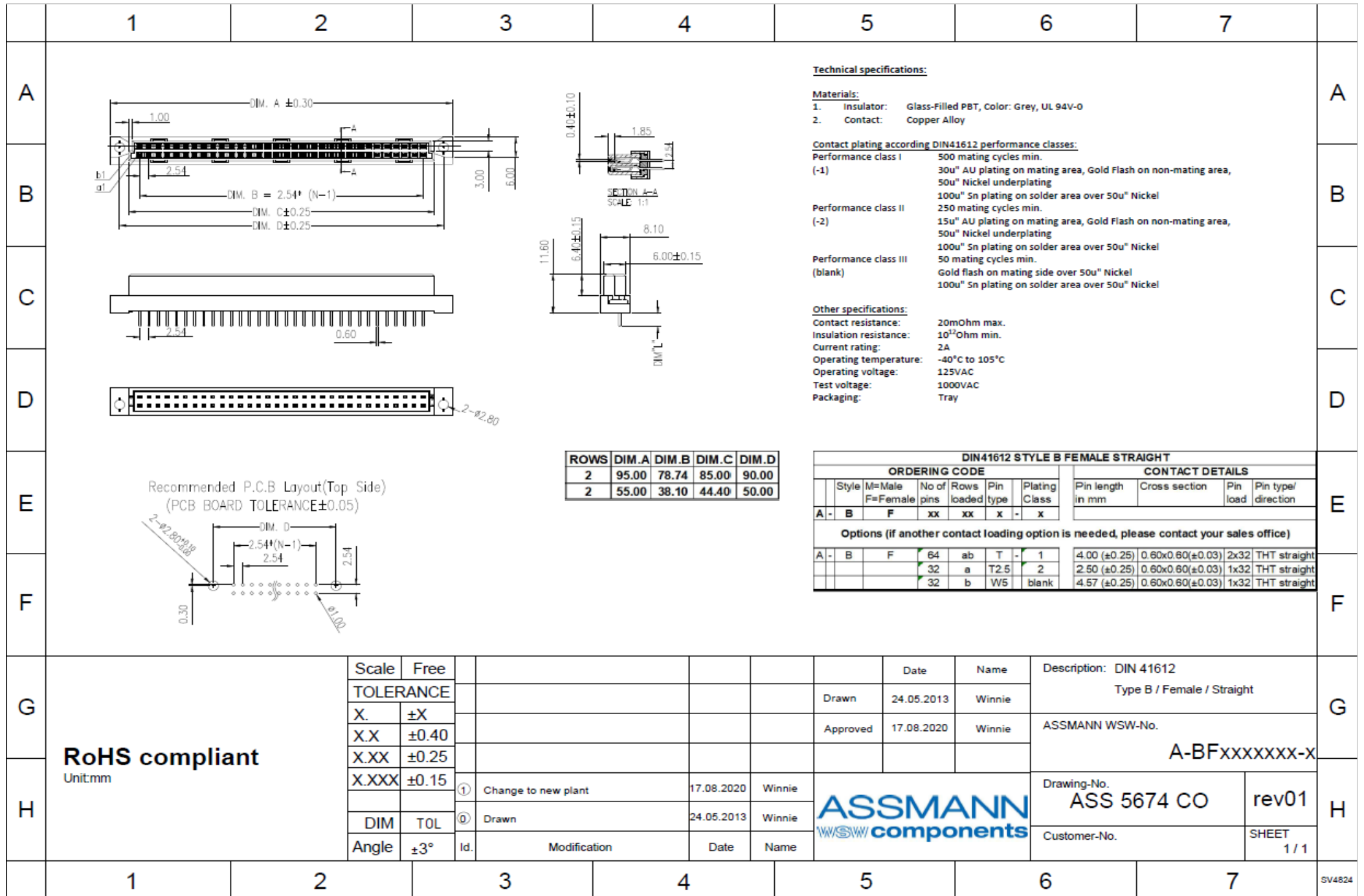
Issue Date: 16.09.2020
 Modification / Revision Date: 16.09.2020

A-BFxxxxx-x	Old version	A-BFxxxxx-x	New version																																
Tolerance	<table border="1"> <thead> <tr> <th>Scale</th> <th>Free</th> </tr> </thead> <tbody> <tr> <td colspan="2">TOLERANCE</td> </tr> <tr> <td>X.</td> <td>±0.25</td> </tr> <tr> <td>X.X</td> <td>±0.1</td> </tr> <tr> <td>X.XX</td> <td>±0.05</td> </tr> <tr> <td>X.XXX</td> <td>±0.012</td> </tr> <tr> <td>DIM</td> <td>TOL</td> </tr> <tr> <td>Angle</td> <td>±1°</td> </tr> </tbody> </table>	Scale	Free	TOLERANCE		X.	±0.25	X.X	±0.1	X.XX	±0.05	X.XXX	±0.012	DIM	TOL	Angle	±1°	Tolerance	<table border="1"> <thead> <tr> <th>Scale</th> <th>Free</th> </tr> </thead> <tbody> <tr> <td colspan="2">TOLERANCE</td> </tr> <tr> <td>X.</td> <td>±X</td> </tr> <tr> <td>X.X</td> <td>±0.40</td> </tr> <tr> <td>X.XX</td> <td>±0.25</td> </tr> <tr> <td>X.XXX</td> <td>±0.15</td> </tr> <tr> <td>DIM</td> <td>TOL</td> </tr> <tr> <td>Angle</td> <td>±1°</td> </tr> </tbody> </table>	Scale	Free	TOLERANCE		X.	±X	X.X	±0.40	X.XX	±0.25	X.XXX	±0.15	DIM	TOL	Angle	±1°
Scale	Free																																		
TOLERANCE																																			
X.	±0.25																																		
X.X	±0.1																																		
X.XX	±0.05																																		
X.XXX	±0.012																																		
DIM	TOL																																		
Angle	±1°																																		
Scale	Free																																		
TOLERANCE																																			
X.	±X																																		
X.X	±0.40																																		
X.XX	±0.25																																		
X.XXX	±0.15																																		
DIM	TOL																																		
Angle	±1°																																		
Contact	<table border="1"> <tbody> <tr> <td>T</td> <td>:0.3±0.02 x 0.64±0.04 x 4±0.2</td> </tr> <tr> <td>T2.5</td> <td>:0.3±0.02 x 0.64±0.04 x 2.5±0.2</td> </tr> <tr> <td>W5</td> <td>:0.6±0.015 x 0.6±0.03-0.05 x 5±0.2</td> </tr> <tr> <td>W7</td> <td>:0.6±0.015 x 0.6±0.03-0.05 x 7.4±0.2</td> </tr> </tbody> </table>	T	:0.3±0.02 x 0.64±0.04 x 4±0.2	T2.5	:0.3±0.02 x 0.64±0.04 x 2.5±0.2	W5	:0.6±0.015 x 0.6±0.03-0.05 x 5±0.2	W7	:0.6±0.015 x 0.6±0.03-0.05 x 7.4±0.2	Contact	<table border="1"> <tbody> <tr> <td>T</td> <td>: 4.00±0.2 x 0.3±0.02 x 0.64±0.04 x</td> </tr> <tr> <td>T2.5</td> <td>: 2.50±0.2 x 0.3±0.02 x 0.64±0.04 x</td> </tr> <tr> <td>W5</td> <td>: 4.57±0.2 x 0.6±0.015 x 0.6±0.03-0.05</td> </tr> </tbody> </table>	T	: 4.00±0.2 x 0.3±0.02 x 0.64±0.04 x	T2.5	: 2.50±0.2 x 0.3±0.02 x 0.64±0.04 x	W5	: 4.57±0.2 x 0.6±0.015 x 0.6±0.03-0.05																		
T	:0.3±0.02 x 0.64±0.04 x 4±0.2																																		
T2.5	:0.3±0.02 x 0.64±0.04 x 2.5±0.2																																		
W5	:0.6±0.015 x 0.6±0.03-0.05 x 5±0.2																																		
W7	:0.6±0.015 x 0.6±0.03-0.05 x 7.4±0.2																																		
T	: 4.00±0.2 x 0.3±0.02 x 0.64±0.04 x																																		
T2.5	: 2.50±0.2 x 0.3±0.02 x 0.64±0.04 x																																		
W5	: 4.57±0.2 x 0.6±0.015 x 0.6±0.03-0.05																																		
Plating	<p>Contact Finish(Option in Part Number)</p> <p>-1: 25µ" (0.63µm)Pd/Ni and 2µ"Gold Plating on Mating Area ,100 µ"(2.54µm)Tin Plating on Tail Area, Flash Gold Plating on Non-mating Area,50 µ" (1.27µm)Nickel Underplate All Over</p> <p>-2: 12µ" (0.30µm)Pd/Ni and 2µ"Gold Plating on Mating Area ,100 µ"(2.54µm)Tin Plating on Tail Area, Flash Gold Plating on Non-mating Area,50 µ" (1.27µm)Nickel Underplate All Over</p> <p>Blank: Flash Gold Plating on mating and non-mating Area, Tin Plating on Tail Area,Nickel Underplate All Over</p>	Plating	<p>Performance class I (-1) 500 mating cycles min. 30u" AU plating on mating area, Gold Flash on non-mating area, 50u" Nickel underplating</p> <p>Performance class II (-2) 250 mating cycles min. 15u" AU plating on mating area, Gold Flash on non-mating area, 50u" Nickel underplating</p> <p>Performance class III (blank) 50 mating cycles min. Gold flash on mating side over 50u" Nickel 100u" Sn plating on solder area over 50u" Nickel</p>																																
For detail, please take attached new drawing: ASS_5674_CO rev01 for reference																																			

PCN Revision History :

Date of Revision : 16.09.2020

Revision Number: 00



RoHS compliant
Unit:mm

Scale	Free
TOLERANCE	
X.	±X
X.X	±0.40
X.XX	±0.25
X.XXX	±0.15
DIM	TOL
Angle	±3°

①	Change to new plant	17.08.2020	Winnie
②	Drawn	24.05.2013	Winnie
Id.	Modification	Date	Name



Description: DIN 41612 Type B / Female / Straight	
ASSMANN WSW-No. A-BFXXXXXXXX-X	
Drawing-No. ASS 5674 CO	rev01
Customer-No.	SHEET 1 / 1