



Auf dem Schüffel 1
D-58513 Lüdenscheid
Tel.: +49-2351 - 5542-00
Fax +49 (2351) 554-861
info@assmann-wsw.com
www.assmann-wsw.com

PRODUCT CHANGE NOTIFICATION (PCN)

ISSUE DATE: 07.18.2023
MODIFICATION / REVISION DATE: 07.18.2023

A-BAT-BH-B1-EA-CRP1
Battery conector

CHANGE NOTIFICATION:

PCN_20230718_ABATBHB1EACRP1

DESCRIPTION OF CHANGES:

CHANGE OF DATA SHEET
CHANGE OF PRODUCT DESIGN
New Draw.-No. ASS_9111_COrev03

REASON FOR CHANGE:

CHANGE OF PRODUCT DIMENSIONS, TOLERANCES AND/OR PROPERTIES

KEY CHARACTERISTICS OF CHANGE:

Details see page 3

PRODUCTS AFFECTED:

A-BAT-BH-B1-EA-CRP1
battery connector

DATE OF CHANGE AND IMPLEMENTATION:

CHANGE: 29/2023
IMPLEMENTATION: 07.18.2023

RESPONSE:

NO RESPONSE TO THIS NOTIFICATION IS REQUIRED

PCN REVISION HISTORY:

DATE OF REVISION: 07.18.2023

REVISION NUMBER: 00

page 1/

Auf dem Schüffel 1
D-58513 Lüdenscheid
Tel.: +49-2351 - 554-200
Fax +49 (2351) 554-861
info@assmann-wsw.com
www.assmann-wsw.com

PRODUCT CHANGE NOTIFICATION (PCN)

ISSUE DATE: 07.18.2023
MODIFICATION / REVISION DATE: 07.18.2023

REFERENCE DOCUMENTS / ATTACHMENTS:
DOCUMENT: DRAWING

ASSMANN WSW P/N	Drawing Number		ASSMANN WSW P/N	Drawing Number
A-BAT-BH-B1-EA-CRP1	ASS_9111_COrev02	↔	A-BAT-BH-B1-EA-CRP1	ASS_9111_COrev03

Auf dem Schüffel 1
D-58513 Lüdenscheid
Tel.: +49-2351 - 554-200
Fax +49 (2351) 554-861
info@assmann-wsw.com
www.assmann-wsw.com

PRODUCT CHANGE NOTIFICATION (PCN)

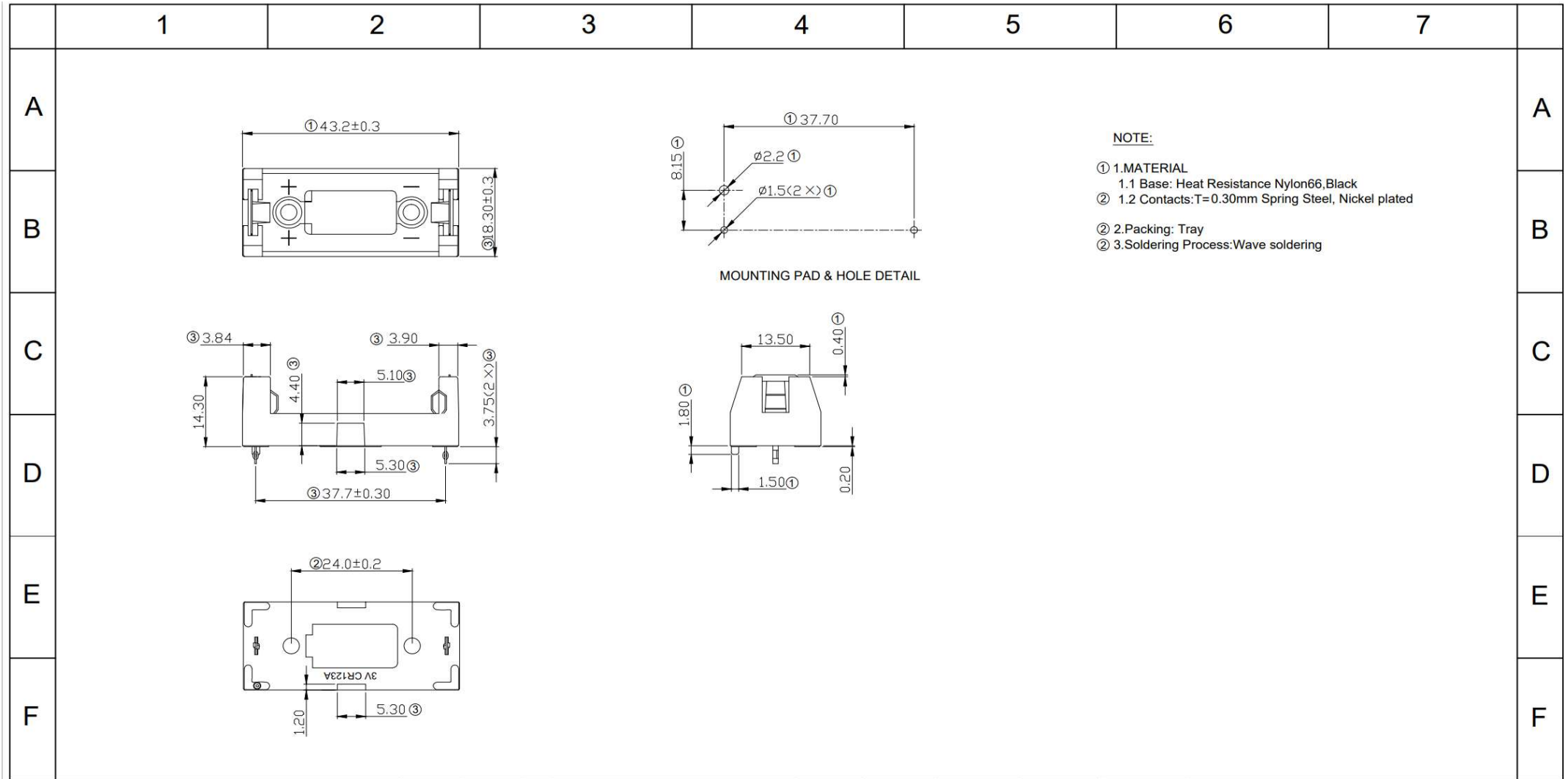
ISSUE DATE: 07.18.2023
MODIFICATION / REVISION DATE: 07.18.2023

A-BAT-BH-B1-EA-CRP1 OLD VERSION	A-BAT-BH-B1-EA-CRP1 NEW VERSION
<p>Dimension & tolerance</p>	<p>Dimension & tolerance</p>
<p>FOR DETAIL, PLEASE TAKE ATTACHED NEW DRAWING: FOR REFERENCE</p>	

PCN REVISION HISTORY:

DATE OF REVISION: 07.18.2023

REVISION NUMBER: 00



NOTE:

- ① 1.MATERIAL
 - 1.1 Base: Heat Resistance Nylon66,Black
 - 1.2 Contacts:T=0.30mm Spring Steel, Nickel plated
- ② 2.Packing: Tray
- ③ 3.Soldering Process:Wave soldering

MOUNTING PAD & HOLE DETAIL

G	RoHS compliant unit:mm	Scale	Free				Date	Name	Description: Battery Holder Type: CR123A / 16340		
		TOLERANCE					Drawn	01.12.2021	Peter		
H		X.	±0.35	③	Updated dimension	07.18.2023	Winnie	Approved	07.18.2022	Winnie	ASSMANN WSW-NO.
		.X	±0.25	②	Updated the notes & P/N & dimension	09.19.2022	Peter				② A-BAT-BH-B1-EA-CRP1
		.XX	±0.20	①	Updated the dimension and notes	07.11.2022	Peter				
		.XXX	±0.15	①	Updated the dimension and notes	07.11.2022	Peter				
		DIM	TOL	①	Drawn	01.12.2021	Peter			Drawing-No. ASS 9111 CO	
Angle	TOL	Id.	modification	Date	Name	Customer-No.				SHEET 1 / 1	