

Capabilities for medical technology

Precision, quality, and reliability – essential values in the field of medical technology. For decades, ASSMANN WSW has stood for high-performance interconnect solutions, precisely manufactured and efficient. With our comprehensive portfolio, state-of-the-art production facilities, and certified processes, we support medical technology manufacturers worldwide in developing safe and durable device and system solutions.

Schematic



Further Information

In medical technology, every connection matters. ASSMANN WSW offers a broad range of connector solutions, designed to meet the high demands of sensitive and long-lasting applications. From flexible FFC connectors and modular interfaces our customized connectors ensure stable signal transmission, mechanical robustness, and long service life even under challenging conditions.

Through customer-specific modifications such as contacts and their plating, sterilization-resistant materials, and enhanced contact reliability, we enable seamless integration of our connectors into medical devices.

Certified quality according to international standards (e.g., ISO, UL, RoHS) forms the foundation for the safety and reliability of our products – a decisive factor for everyday medical use.

From prototype to series production, our medical-grade connector solutions combine precise manufacturing with strict quality control – supporting the next generation of reliable and high-performance medical devices.

Application example

Our connector solutions are suitable within various applications, like:

- Sensor holders for measuring systems
- Portable diagnostics
- Patient monitoring units or infusion systems
- Laboratory analysis equipment
- Meters for e.g. lactate

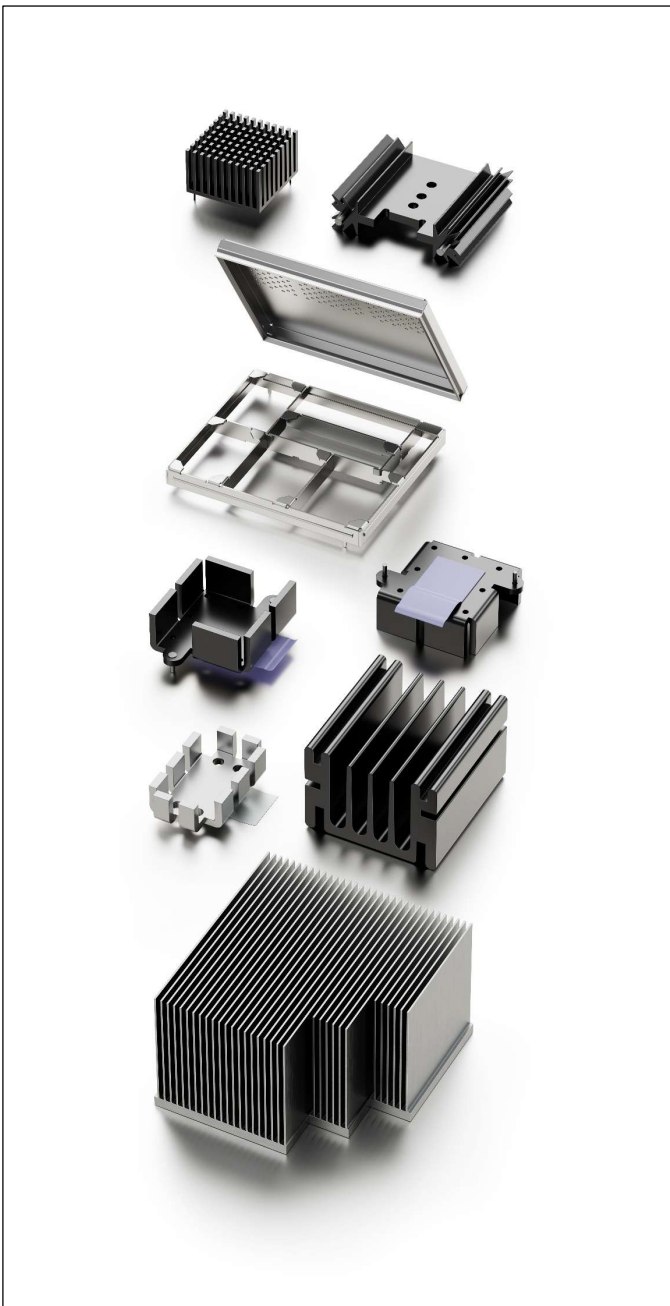
Depending on the application, ASSMANN WSW provides custom configuration connectors with high-temperature resistant materials, gold-plated contact surfaces, and sealed housings (up to IP67) to ensure safe operation in clinical environments.



Capabilities for medical technology

Precision, quality, and reliability – essential values in the field of medical technology. For decades, ASSMANN WSW has stood for high-performance, precisely manufactured and efficient thermal management systems. With our comprehensive portfolio, state-of-the-art production facilities, and certified processes, we support medical technology manufacturers worldwide in developing safe and durable device and system solutions.

Schematic



Further Information

In medical technology, stable temperatures are crucial for precision and reliability. Thermal management solutions by ASSMANN WSW provide safe and efficient heat dissipation for an optimized system.

Our product portfolio includes various cooling solutions – from extruded aluminum heatsinks, skived heatsinks for high cooling efficiency at small spaces, up to fully customized thermal designs as well as EM/EMC shielding's. With precisely machined surfaces and treatments or flexible mounting options, our thermal management solutions integrate seamlessly into existing medical device concepts.

ASSMANN WSW provides thermal reliability that ensures the long-term stability of complex medical electronics. Using thermal foils, already assembled at heatsinks, our solutions are Plug & Play and avoid air inclusion – to optimize the heat transfer to ensure high precision of medical applications.

Application examples

Our thermal management solutions are suitable within various applications, like:

- Diagnostic devices
- Electronic control units
- Dialysis equipment
- Laboratory equipment
- Modules for wireless communication

Depending on the application, ASSMANN WSW provides custom thermal management solutions, specified for your application for an optimized operation of the medical equipment within the clinical environment.

Capabilities for medical technology

Precision, quality, and reliability – essential values in the field of medical technology. For decades, ASSMANN WSW has stood for high-performance interconnect solutions, precisely manufactured cable assemblies. With our comprehensive portfolio, state-of-the-art production facilities, and certified processes, we support medical technology manufacturers worldwide in developing safe and durable device and system solutions.

Schematic



Further Information

ASSMANN WSW manufactures customized cable assemblies for medical applications – from data and signal cables to power and hybrid solutions. Our manufacturing expertise allows both small and large series production, always in compliance with the highest quality standards.

Every step follows a consistent quality process. Specialized materials (FDA), flame retardancy, and chemical resistance enable safe use of our cable assemblies even in sterile and safety-critical environments.

Upon request, we offer complete solutions including tested connectors, individual labeling, and customized protective packaging – ready for direct integration into your medical device.

Ideal for use in patient monitoring systems, portable diagnostic devices, ablaters, and laboratory equipment as well as dialysis machinery – at hospitals and at home.

Application example

Our cable assembly solutions are suitable within various applications, like:

- Diagnostic devices
- Electronic control units
- Dialysis
- Laboratory equipment

Our portfolio includes vibration-resistant solutions, complex cable harnesses, and fully customized cable assemblies tailored to your application requirements.

With 100% electrical testing, testing of contact resistance and insulation resistance, as well as temperature resistance and plug-in tests, quality is assured to the highest degree.

ASSMANN

WSW components

A company of **BCS** GROUP

LEADING CUSTOMIZED CONNECTIVITY SOLUTIONS

■ CONNECTORS ■ THERMAL MANAGEMENT ■ CABLE ASSEMBLIES ■ CAPABILITIES

ASSMANN WSW components GmbH

Auf dem Schüffel 1,
D-58513 Lüdenscheid,
Germany

Phone: +49 (23 51) 5542 - 00

ASSMANN WSW components k.s.

Zahradnicka 1135,
SK 958 03 Partizanske,
Slovakia

Phone: +421 (3874) 7 141 - 5

ASSMANN WSW components Inc.

15001 S 50th St Building B
Suite 120, Phoenix, AZ 85044,
USA

Phone: +1 (480) 897 - 7001

ASSMANN WSW components Ltd.

Room 908, Zhong Zheng, NO.82, Dong
Men Zhong RD, Changan Town, Dongguan
City, Guangdong 523847, China

Phone: +86 (769) 8 542 620 - 1